



## M-7398-F C-6 HD 6 Pinion Wide Ratio Gearset INSTALLATION INSTRUCTIONS

NO PART OF THIS DOCUMENT MAY BE REPRODUCED WITHOUT PRIOR AGREEMENT AND WRITTEN PERMISSION OF FORD RACING PERFORMANCE PARTS.

Please visit [www.fordracingparts.com](http://www.fordracingparts.com) for the most current instruction information

**!!! PLEASE READ ALL OF THE FOLLOWING INSTRUCTIONS CAREFULLY PRIOR TO INSTALLATION.  
AT ANY TIME YOU DO NOT UNDERSTAND THE INSTRUCTIONS, PLEASE CALL THE FORD RACING  
TECHLINE AT 1-800-367-3788 !!!**

### OVERVIEW:

This kit is designed for the serious racer who needs the additional torque multiplication of this wide ratio (2.72 low, 1.54 intermediate) gearset and the minimum internal friction characteristics of needle bearing thrust washers. Installation of this kit requires a complete transmission teardown. Please refer to Section 17 of the Ford Shop Manual for detailed C6 teardown/assembly information.

**CAUTION: REFER TO FIGURE B BEFORE ATTEMPTING INSTALLATION.**

### KIT COMPONENTS:

<u>Qty.</u>	<u>Description</u>	<u>Replacement Part #</u>
1	Forward Ring Gear Hub	F7TZ-7B067-AB (*2)
1	Forward Ring Gear	F81Z-7D392-AA (*2)
2	Snap Ring (hub to ring gear)	377132-S (*2)
1	Forward Planet Assy. 6 Pinion	F81Z-7A398-CA (*2)
1	Input Shell/Sun Gear Assy.	(*3)
1	Reverse Planet Assy. 4 Pinion	Not serviced
1	Reverse Ring Gear Hub	Not serviced
1	Reverse Ring Gear	E9TZ-7A153-B (*2)
2	Needle Bearing T/W (#3/6 Position)	E9TZ-7D234-A (*2)
1	Plastic T/W (#4 Position)	C9AZ-7D090-A (*2)
1	Needle Bearing T/W (#5 Position)	F81Z-7A166-AA (*2)
2	Needle Bearing T/W (#7/8 Position)	M-7240-F (*1)
1	Needle Bearing T/W (#9 Position)	M-7240-B (*1)
1	Inner Race, One Way Clutch	E9TZ-7D171-AA (*2)

### **\*Notes:**

- (\*1) Available through Ford Racing only
- (\*2) Available through Ford/Lincoln/Mercury dealer
- (\*3) Available through Ford/Lincoln/Mercury dealers as individual parts:
  - Input Shell E9TZ-7D064-A
  - Sun Gear E9TZ-7D063-A
  - Thrust Washer C6AZ-7D066-B
  - Snap Ring 377300-S

Factory Ford shop manuals are available from Helm Publications, 1-800-782-4356



## M-7398-F C-6 HD 6 Pinion Wide Ratio Gearset INSTALLATION INSTRUCTIONS

NO PART OF THIS DOCUMENT MAY BE REPRODUCED WITHOUT PRIOR AGREEMENT AND WRITTEN PERMISSION OF FORD RACING PERFORMANCE PARTS.

### **INSTALLATION:**

**Step 1:** Disassemble transmission per Section 17 of Ford Shop Manual.

#### **Caution:**

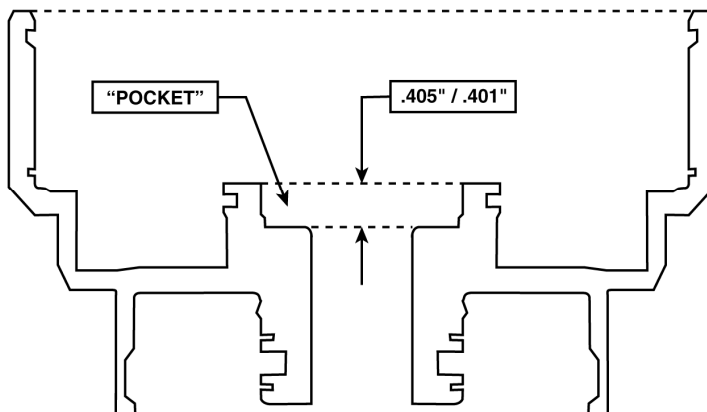
**Check the forward clutch cylinder after disassembling your C-6 transmission. The #3 needle bearing “pocket” should be .405/.401" deep (see figure “B”). Some early model C-6 transmissions had pockets that were approximately /320" deep.**

USING A “SHALLOW POCKET” FORWARD CLUTCH CYLINDER IN CONJUNCTION WITH THE M-7398-F KIT WILL RESULT IN TRANSMISSION FAILURE.

The clutch cylinder service part number (E9TZ-7A360-A) has the correct “pocket” dimension.

E-81P-7D424-AR will not work in this application

FIGURE B



**Step 2:** Refer to Figure “A” for correct positioning of M-7398-F components in transmission.

**Step 3:** Rebuild transmission per Section 17 of the Ford Shop Manual using all of M-7398-F components in place of stock components

#### **Caution:**

The components in this kit have been packaged as they would be installed in the transmission. This was done to minimize the possibility of shipping damage and missing components.

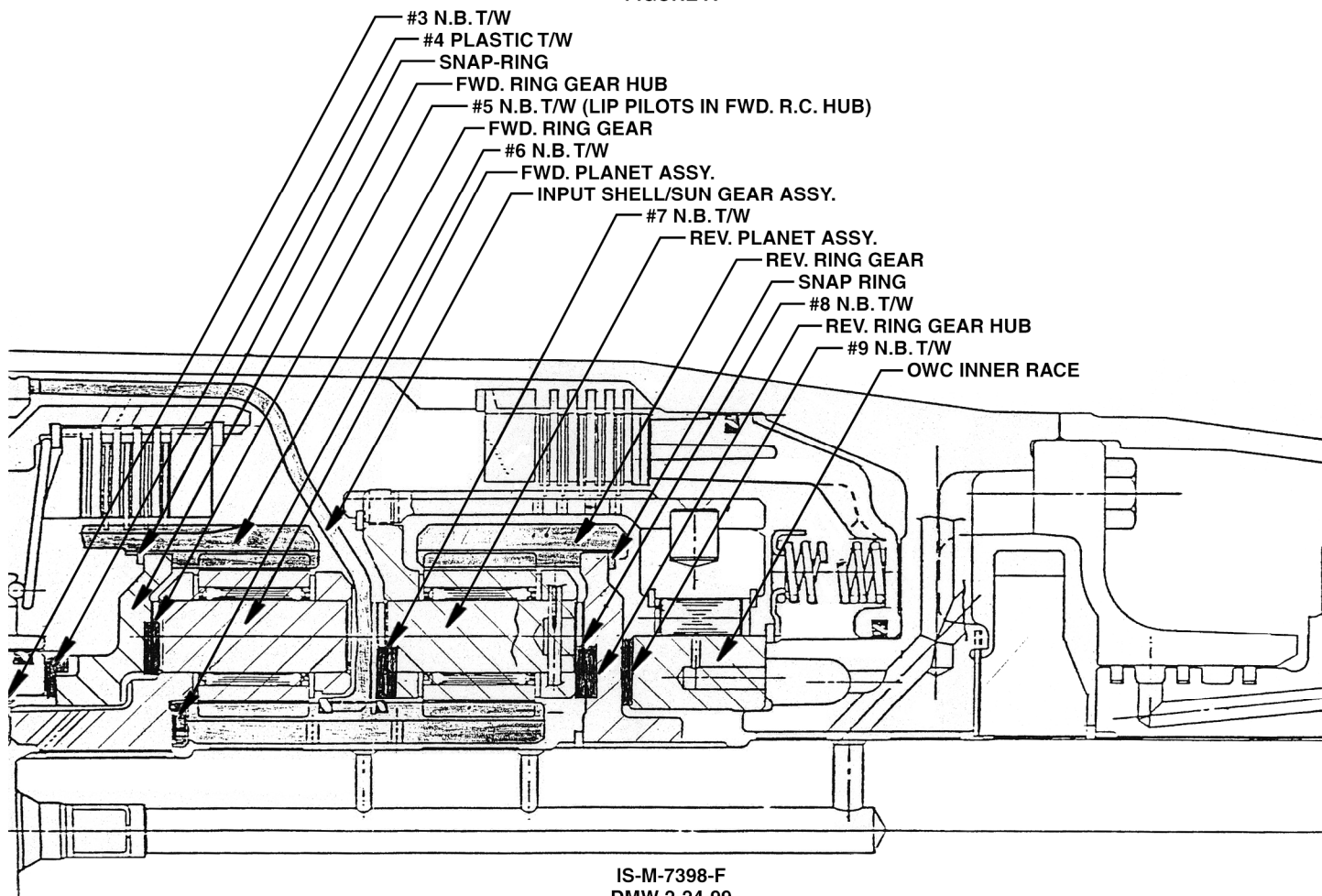
**IT IS THE RESPONSIBILITY OF THE INSTALLER TO INSURE THAT THE HUB TO RING GEAR SNAP RINGS ARE CORRECTLY SEATED AND THE COMPONENTS ARE ASSEMBLED IN THE TRANSMISSION PER FIGURE “A”.**

Factory Ford shop manuals are available from Helm Publications, 1-800-782-4356

# M-7398-F C-6 HD 6 Pinion Wide Ratio Gearset INSTALLATION INSTRUCTIONS

NO PART OF THIS DOCUMENT MAY BE REPRODUCED WITHOUT PRIOR AGREEMENT AND WRITTEN PERMISSION OF FORD RACING PERFORMANCE PARTS.

FIGURE A



Factory Ford shop manuals are available from Helm Publications, 1-800-782-4356