



**FORD PERFORMANCE**

## M-16826-MA 2015-2020 Mustang Hood Struts

NO PART OF THIS DOCUMENT MAY BE REPRODUCED WITHOUT PRIOR AGREEMENT AND WRITTEN PERMISSION OF FORD PERFORMANCE PARTS

Please visit [www.performanceparts.ford.com](http://www.performanceparts.ford.com) for the most current instruction and warranty information.

PLEASE READ ALL OF THE FOLLOWING INSTRUCTIONS CAREFULLY PRIOR TO INSTALLATION.  
AT  
ANY TIME YOU DO NOT UNDERSTAND THE INSTRUCTIONS, PLEASE CALL THE FORD PERFORMANCE  
TECHLINE AT 1-800-367-3788

### **Package Contents**

**2 Ford Performance laser etched gas struts**

**1 left hand upper bracket**

**1 right hand upper bracket**

**2 lower fender brackets**

**2 fender bolts/2 fender washers**

**2 fender bolt retainers**

**1 battery trim cover template (included in bracket bag)**

### **Required Tools**

**6mm Allen wrench or socket**

**1" inch drill bit, step drill or hole saw & drill**

**13 mm socket**

**Scribe or sharp punch**

**Scissors**

Factory Ford shop manuals are available from Helm Publications, 1-800-782-4356



FORD PERFORMANCE

## M-16826-MA 2015-2020 Mustang Hood Struts

NO PART OF THIS DOCUMENT MAY BE REPRODUCED WITHOUT PRIOR AGREEMENT AND WRITTEN PERMISSION OF FORD PERFORMANCE PARTS

**Step 1. With the hood propped up in the open position, remove both left and right 13mm nut from the upper hood hinge stud.**

**Step 2. Install left and right upper hood hinge strut mount as shown in below photos. Left and right bracket are mirror opposites of each other and fit into the hood hinge.**



Factory Ford shop manuals are available from Helm Publications, 1-800-782-4356



**FORD PERFORMANCE**

## M-16826-MA 2015-2020 Mustang Hood Struts

NO PART OF THIS DOCUMENT MAY BE REPRODUCED WITHOUT PRIOR AGREEMENT AND WRITTEN PERMISSION OF FORD PERFORMANCE PARTS

**Step 3. Tighten the nuts to secure the bracket and hood hinge.**

**Step 4. Remove battery cover. Cut battery trim cover template from provided hard paper pattern.**

**Remove battery trim cover attaching pins. Place large hole of template over the retainer hole in the fender side of the battery trim cover.**

**For 2015-2017 line up the fender side line and mark the hole center with a scribe or sharp object through the indicator hole. See photo below.**

**For 2018-2020 move 5/8 closer to large hole and mark.**



**Step 5. Cut 1" hole with center in the marked location. A 1" drill or 1" hole saw may be used.**



Factory Ford shop manuals are available from Helm Publications, 1-800-782-4356



**FORD PERFORMANCE**

## M-16826-MA 2015-2020 Mustang Hood Struts

NO PART OF THIS DOCUMENT MAY BE REPRODUCED WITHOUT PRIOR AGREEMENT AND WRITTEN PERMISSION OF FORD PERFORMANCE PARTS

**Optional: You can cut from the side of cover to strut hole. This allows you to completely remove the battery cover without removing the strut.**



**Step 6. Place assembled lower bracket retainer into the fender hole by sliding the retainer inside the hole (drivers side has the lock washer, two retaining pins and star washer).**



Factory Ford shop manuals are available from Helm Publications, 1-800-782-4356

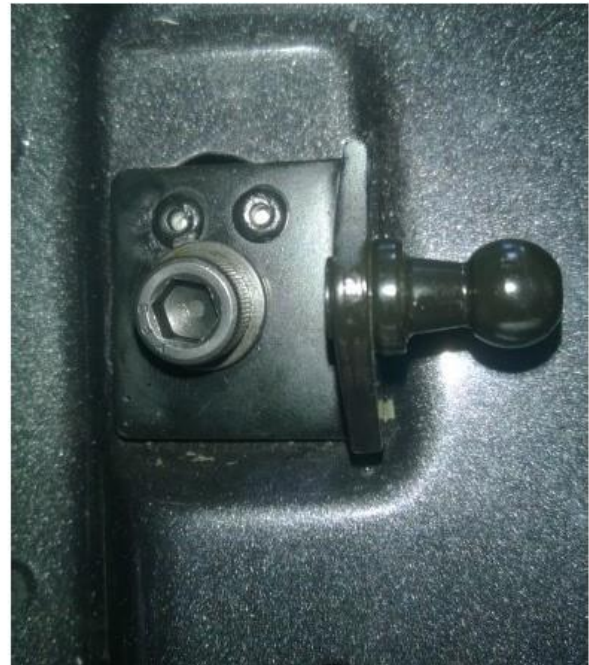


FORD PERFORMANCE

## M-16826-MA 2015-2020 Mustang Hood Struts

NO PART OF THIS DOCUMENT MAY BE REPRODUCED WITHOUT PRIOR AGREEMENT AND WRITTEN PERMISSION OF FORD PERFORMANCE PARTS

Star washer goes to the inside of the fender hole. Once retainer is inside the fender hole, the bracket is positioned so the 2 pins are toward the firewall. Move the bracket as far as possible toward the front of the car and toward the driver's side. Pull up on the bracket and finger-tighten the Allen bolt allowing the retainer to catch on the inside of the fender hole. The retainer should seat in such a way so that the long dimension is lined up toward the tires, NOT the front of the car. Once the Allen bolt is snug, tighten with a 6MM Allen wrench or socket to 20 ft. lbs. Secure to this tightness as the hood weight and strut pressure will move the bracket if not secure & could cause damage if the bracket moves enough for the strut to pop off. Brackets are left and right, the one with the lock washer on top, the 2 pins and the serrated washer under is the driver side.



Factory Ford shop manuals are available from Helm Publications, 1-800-782-4356



**FORD PERFORMANCE**

## M-16826-MA 2015-2020 Mustang Hood Struts

NO PART OF THIS DOCUMENT MAY BE REPRODUCED WITHOUT PRIOR AGREEMENT AND WRITTEN PERMISSION OF FORD PERFORMANCE PARTS



**Step 7. Reinstall the battery cover and reinstall the push pins that secure the battery cover in place.**



Factory Ford shop manuals are available from Helm Publications, 1-800-782-4356



**FORD PERFORMANCE**

## M-16826-MA 2015-2020 Mustang Hood Struts

NO PART OF THIS DOCUMENT MAY BE REPRODUCED WITHOUT PRIOR AGREEMENT AND WRITTEN PERMISSION OF  
FORD PERFORMANCE PARTS

**Step 8. Snap on the hood struts with the cylinder portion at the hood and the Ford Performance logo facing outward, at the same time taking the hood prop out of the hood prop hole.**



Factory Ford shop manuals are available from Helm Publications, 1-800-782-4356



**FORD PERFORMANCE**

## M-16826-MA 2015-2020 Mustang Hood Struts

NO PART OF THIS DOCUMENT MAY BE REPRODUCED WITHOUT PRIOR AGREEMENT AND WRITTEN PERMISSION OF FORD PERFORMANCE PARTS

**Step 9. Relocate washer hose from upper clip to prevent possible interference when the hood is closed.**



Hose left in stock location, 2018 applications.

Factory Ford shop manuals are available from Helm Publications, 1-800-782-4356





FORD PERFORMANCE

## M-16826-MA 2015-2020 Mustang Hood Struts

NO PART OF THIS DOCUMENT MAY BE REPRODUCED WITHOUT PRIOR AGREEMENT AND WRITTEN PERMISSION OF FORD PERFORMANCE PARTS



**Step 10. Release both clips. Remove hose from both clips. Move hose downward about ½" & re-fasten lower clip. Interference area as marked. (2018-2020 only). Remove unused upper clip. This relocation prevents any possibility of interference between the washer hose and the strut cylinder when the hood is closed.**

**Step 11. Test function of hood struts**

**Step 12. Remove hood prop from radiator support cover.**

Factory Ford shop manuals are available from Helm Publications, 1-800-782-4356