



M-5018-BR4
2021+MY Bronco
Bronco Raptor Skid Plate Kit

NO PART OF THIS DOCUMENT MAY BE REPRODUCED WITHOUT PRIOR AGREEMENT AND WRITTEN PERMISSION OF
FORD PERFORMANCE PARTS © Ford Motor Company 2020

PRIOR TO INSTALLATION READ THESE INSTRUCTION COMPETELY
For questions, Call the FORD PERFORMANCE Techline 1-800-367-3788

Please visit <https://www.performanceparts.ford.com> for warranty information



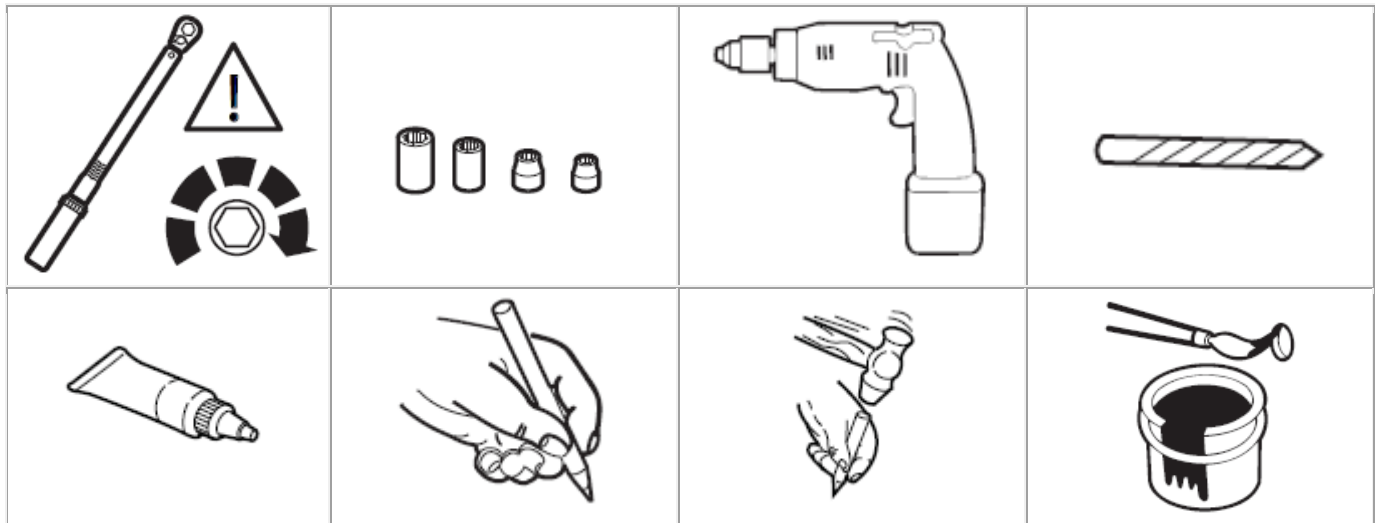
Ford Factory Shop Manual purchase options www.motorcraftservice.com

NO PART OF THIS DOCUMENT MAY BE REPRODUCED WITHOUT PRIOR AGREEMENT AND WRITTEN PERMISSION OF FORD PERFORMANCE PARTS © Ford Motor Company 2020

Kit contents:

Description	Quantity
Bronco Raptor Front Skid Plate	1
Bronco Raptor Engine Skid Plate	1
Bronco Raptor Transmission Skid Plate	1
Bronco Raptor Transfer Case Skid Plate	1
Spacer (Front Skid Plate)	1
Bracket (Sway Bar)	2
Nut, M10	2
Bolt & Washer, M10x39	14
Bolt & Washer, M10x78.5	1
Flag Nut, M10	1
J Clip, M10	2

Special Tool(s) / General Equipment



Ford Factory Shop Manual purchase options www.motorcraftservice.com



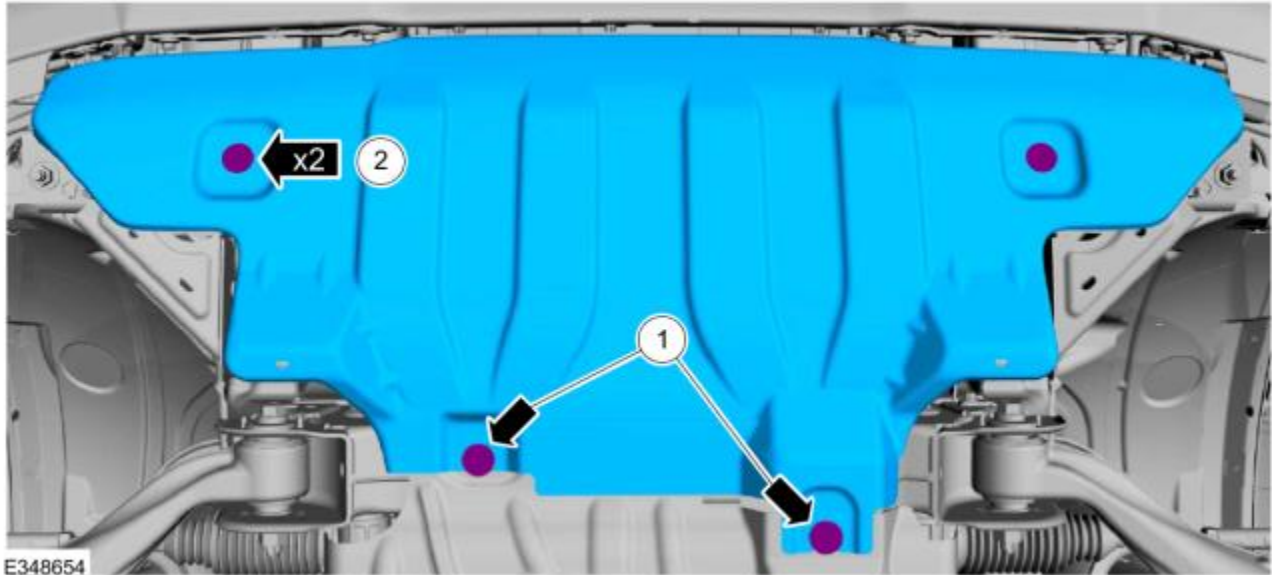
FORD PERFORMANCE

M-5018-BR4
2021+MY Bronco
Bronco Raptor Skid Plate Kit

NO PART OF THIS DOCUMENT MAY BE REPRODUCED WITHOUT PRIOR AGREEMENT AND WRITTEN PERMISSION OF FORD PERFORMANCE PARTS © Ford Motor Company 2020

Removal

1. Remove the factory skid plates.
 1. Loosen the bolts.
2. Remove the bolts and the underbody shield.



Ford Factory Shop Manual purchase options www.motorcraftservice.com



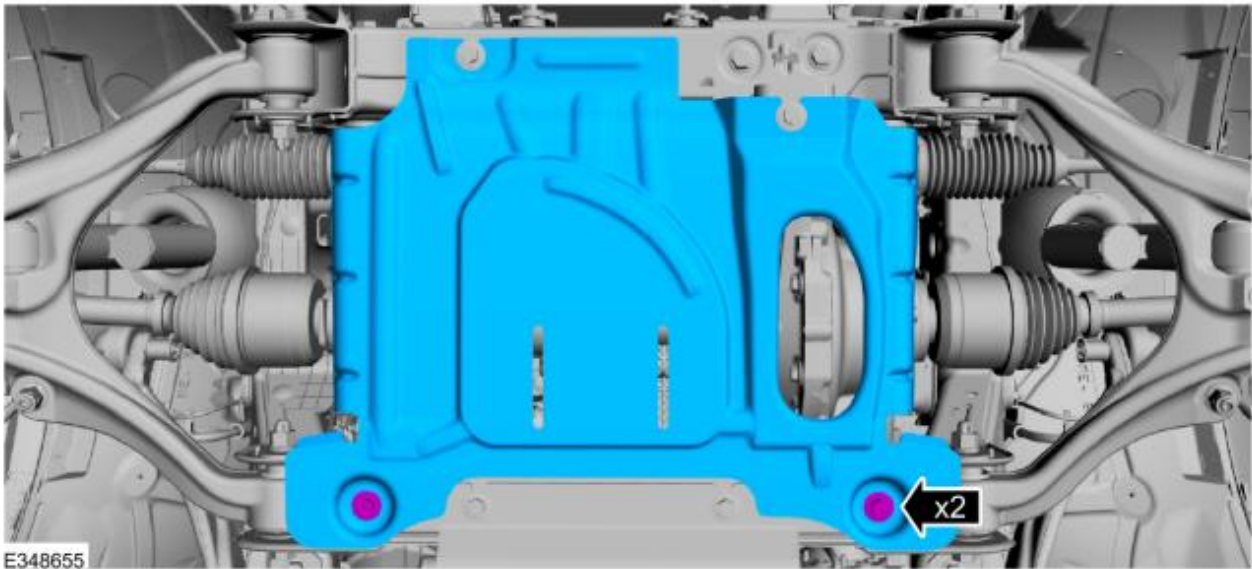
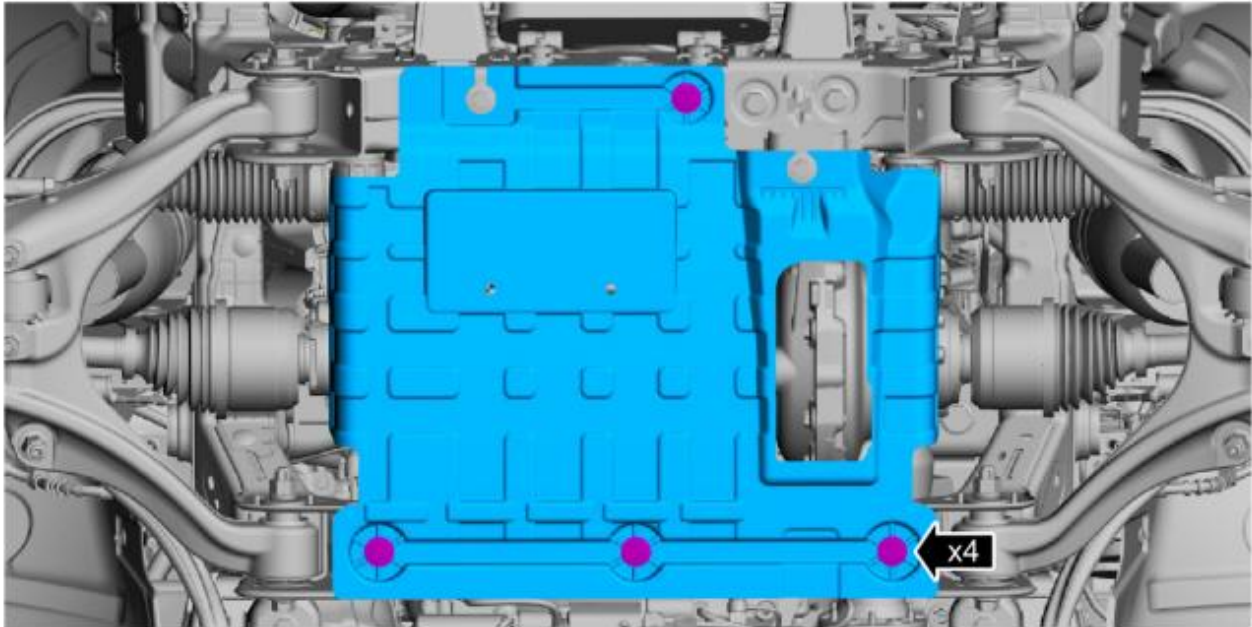
FORD PERFORMANCE

M-5018-BR4
2021+MY Bronco
Bronco Raptor Skid Plate Kit

NO PART OF THIS DOCUMENT MAY BE REPRODUCED WITHOUT PRIOR AGREEMENT AND WRITTEN PERMISSION OF FORD PERFORMANCE PARTS © Ford Motor Company 2020

2. **NOTE:** Underbody shields vary by model.

Remove the bolts and the underbody shield.



Ford Factory Shop Manual purchase options www.motorcraftservice.com

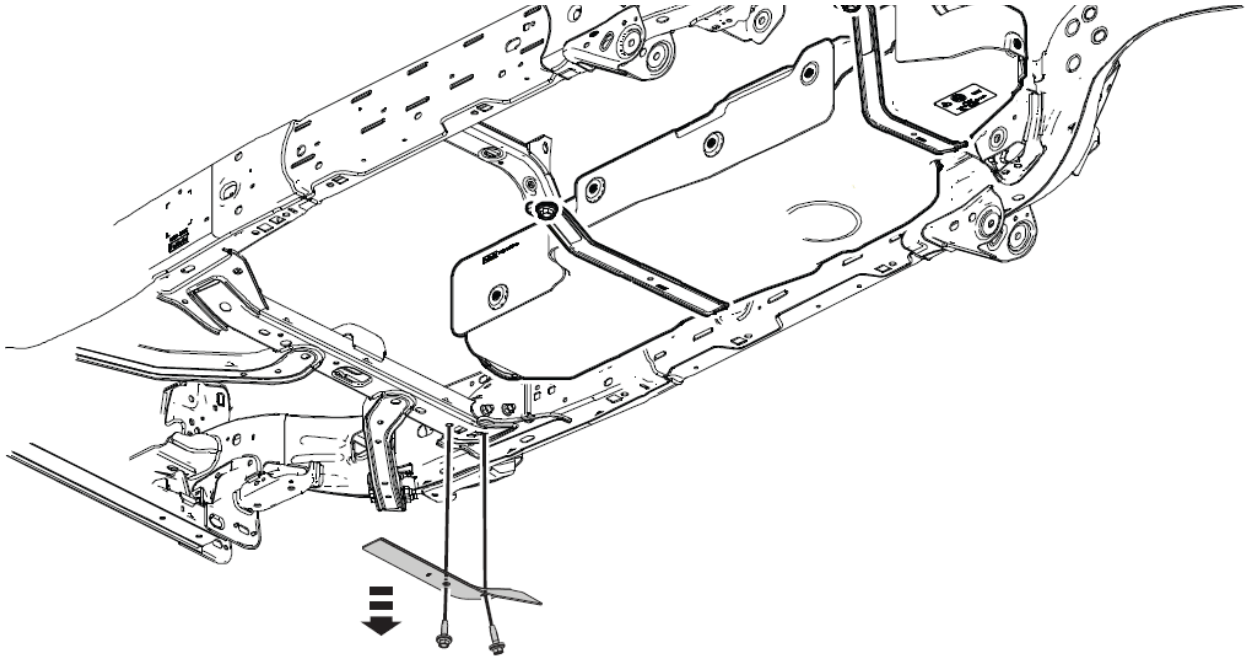


FORD PERFORMANCE

M-5018-BR4
2021+MY Bronco
Bronco Raptor Skid Plate Kit

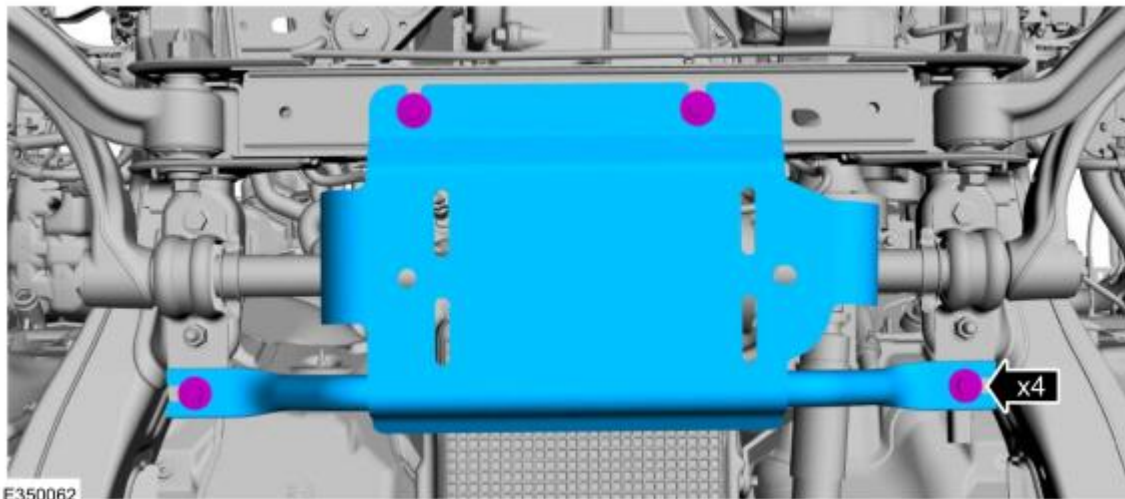
NO PART OF THIS DOCUMENT MAY BE REPRODUCED WITHOUT PRIOR AGREEMENT AND WRITTEN PERMISSION OF FORD PERFORMANCE PARTS © Ford Motor Company 2020

3. If equipped, remove the bolts and plate.



Vehicles with Sway Bar Disconnect

4. Remove the bolts and the skid plate.



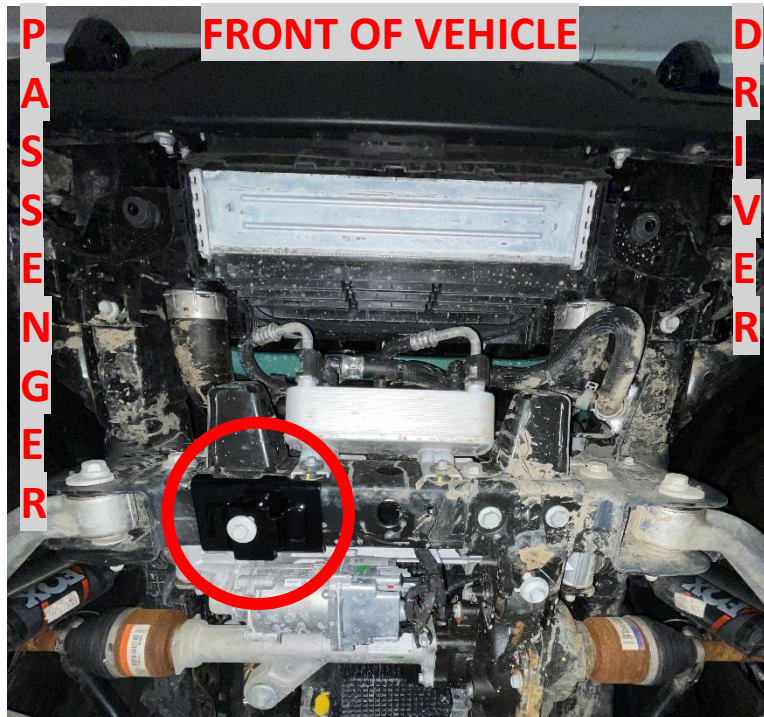
Ford Factory Shop Manual purchase options www.motorcraftservice.com

NO PART OF THIS DOCUMENT MAY BE REPRODUCED WITHOUT PRIOR AGREEMENT AND WRITTEN PERMISSION OF FORD PERFORMANCE PARTS © Ford Motor Company 2020

Installation

1. Apply blue Loctite to the M10x78.5 fastener then loosely install the spacer to the front cross member of the passenger side of the vehicle so the threads of the fastener are not fully engaged.

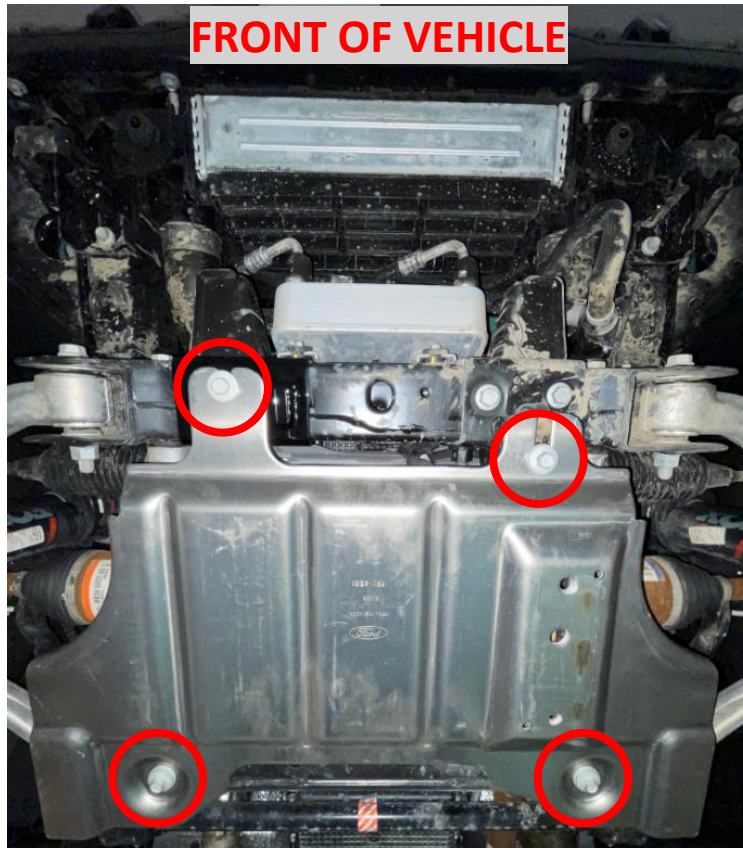
NOTE: *The side of the spacer with two notches should face the front of the vehicle.*



Ford Factory Shop Manual purchase options www.motorcraftservice.com

NO PART OF THIS DOCUMENT MAY BE REPRODUCED WITHOUT PRIOR AGREEMENT AND WRITTEN PERMISSION OF FORD PERFORMANCE PARTS © Ford Motor Company 2020

2. Install the engine skid plate using the M10x39 fasteners. Loosely tighten the bolts so the threads are not fully engaged.



Ford Factory Shop Manual purchase options www.motorcraftservice.com



FORD PERFORMANCE

M-5018-BR4
2021+MY Bronco
Bronco Raptor Skid Plate Kit

NO PART OF THIS DOCUMENT MAY BE REPRODUCED WITHOUT PRIOR AGREEMENT AND WRITTEN PERMISSION OF FORD PERFORMANCE PARTS © Ford Motor Company 2020

Non Sway Bar Disconnect Vehicles

3. Remove the 4 bolts from the sway bar and set aside.



4. On both sides, install the sway bar brackets provided with the kit underneath the sway bar then reuse the bolts from the last step and tighten.

Torque: 60 lb-ft ± 10 lb-ft (90 N-m ± 13.5 N-m)



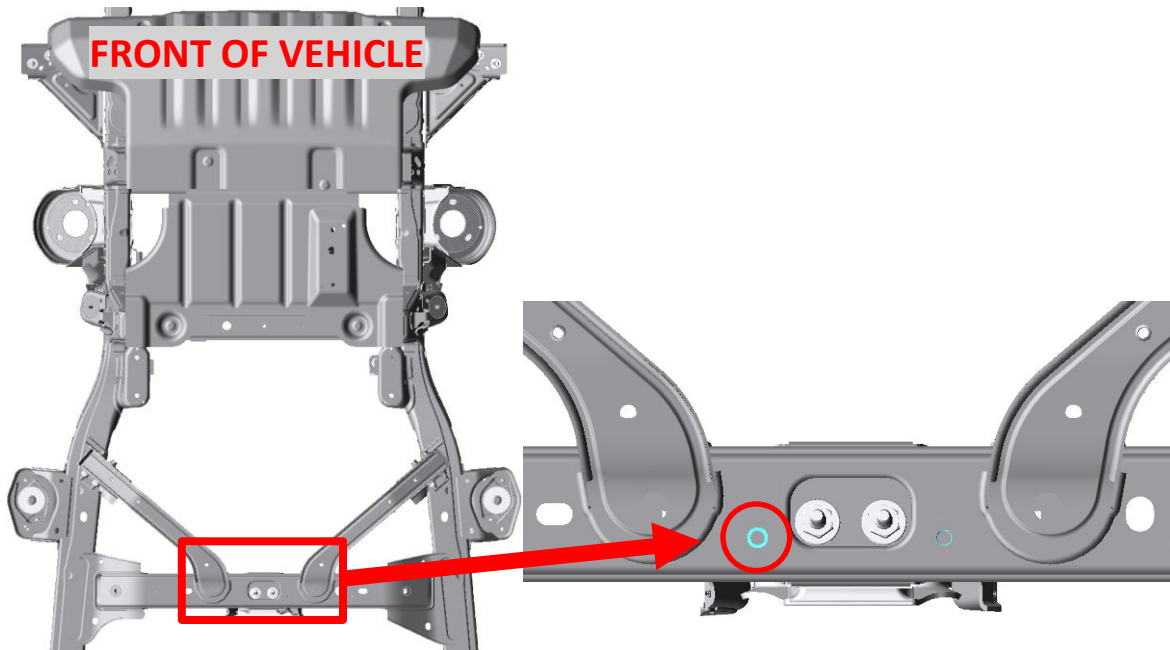
Ford Factory Shop Manual purchase options www.motorcraftservice.com

NO PART OF THIS DOCUMENT MAY BE REPRODUCED WITHOUT PRIOR AGREEMENT AND WRITTEN PERMISSION OF FORD PERFORMANCE PARTS © Ford Motor Company 2020

21-22MY Vehicles

Note: Some 21-22MY vehicles may already have the necessary bolt holes to install the transmission skid plate.

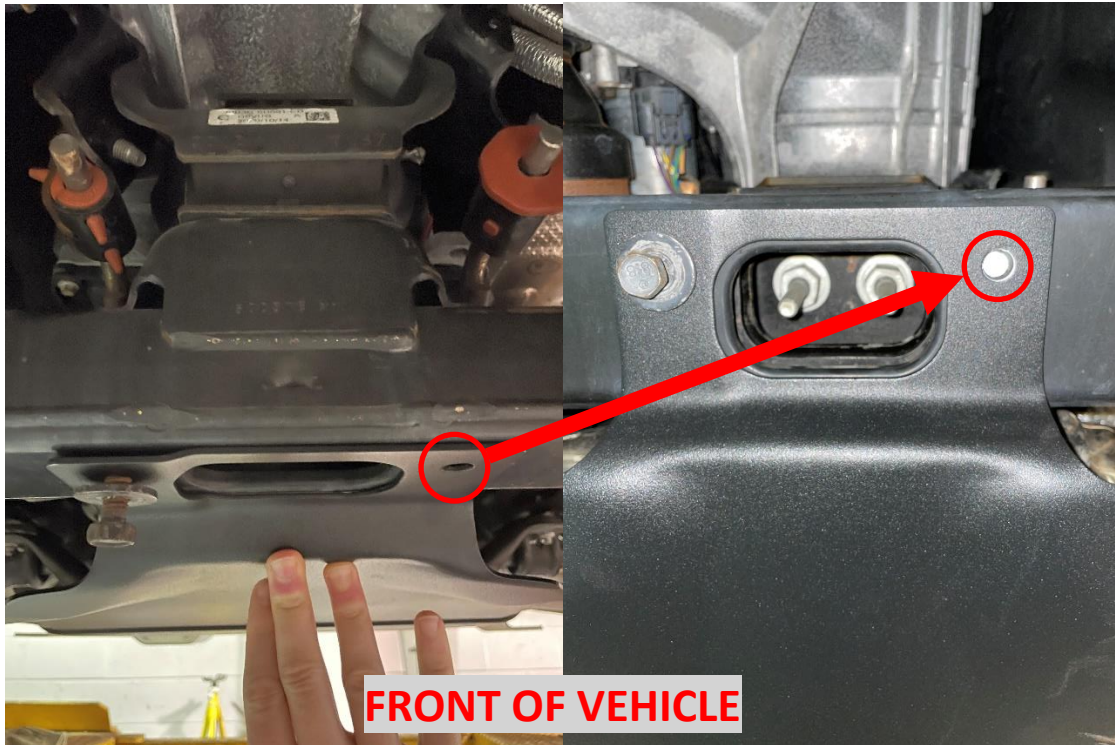
5. Verify if your vehicle has a passenger side bolt hole on the third cross member (from the front) of the frame.



Ford Factory Shop Manual purchase options www.motorcraftservice.com

NO PART OF THIS DOCUMENT MAY BE REPRODUCED WITHOUT PRIOR AGREEMENT AND WRITTEN PERMISSION OF FORD PERFORMANCE PARTS © Ford Motor Company 2020

6. If not equipped with the passenger side bolt hole, place and hold the transmission skid plate in position then use a paint marker to mark the hole and center punch. Set the transmission skid plate aside.



7. Drill a pilot hole then use a 29/64" bit to drill a hole.
8. Apply PM-13A Anti-Corrosion Coating to the drilled hole.

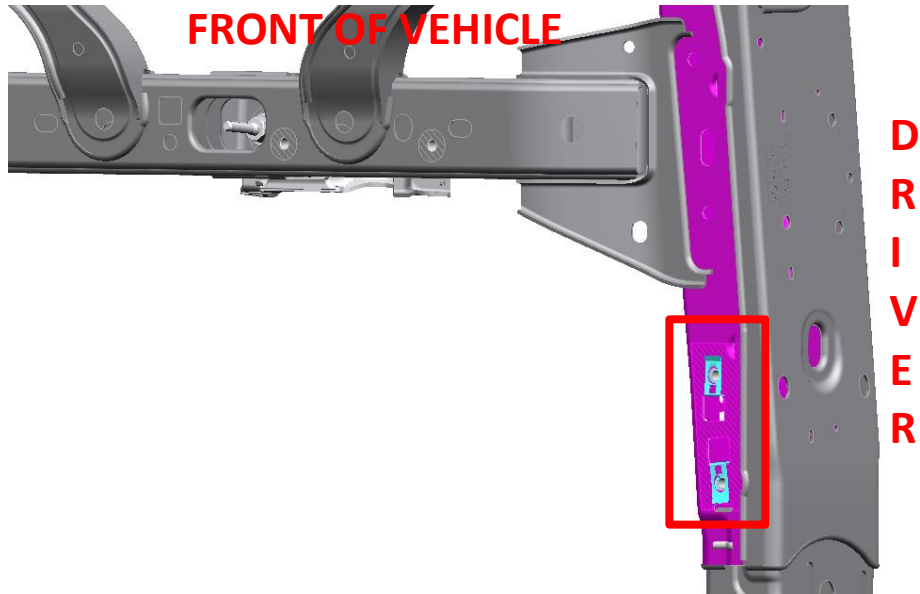


FORD PERFORMANCE

M-5018-BR4
2021+MY Bronco
Bronco Raptor Skid Plate Kit

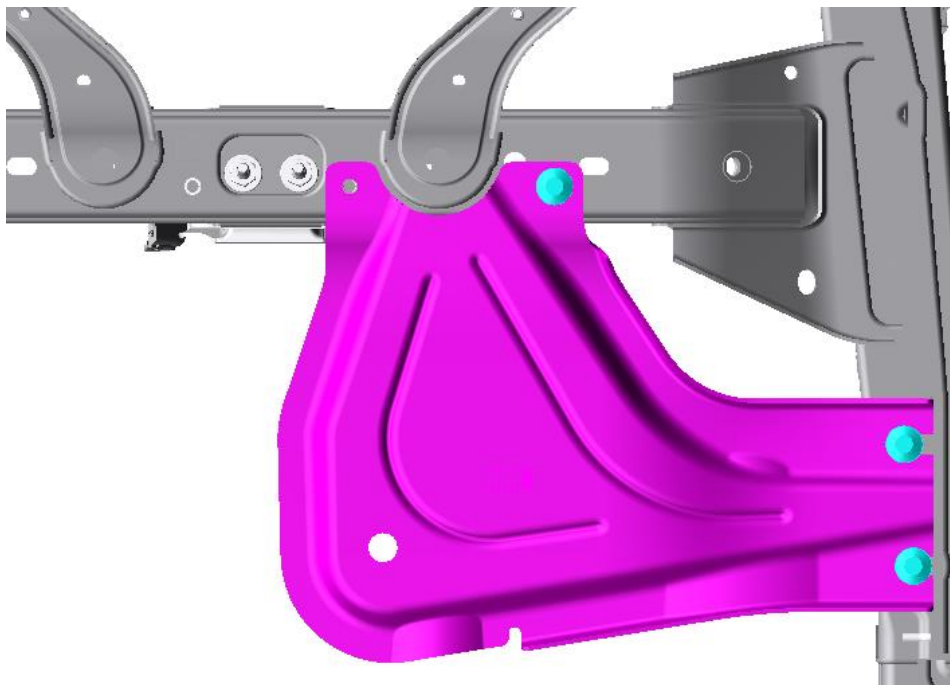
NO PART OF THIS DOCUMENT MAY BE REPRODUCED WITHOUT PRIOR AGREEMENT AND WRITTEN PERMISSION OF FORD PERFORMANCE PARTS © Ford Motor Company 2020

9. Install the transfer case skid plate.
 1. Place the M10 J clips into position on the frame shown below.



2. Use three M10x39 fasteners to install the transfer case skid plate.

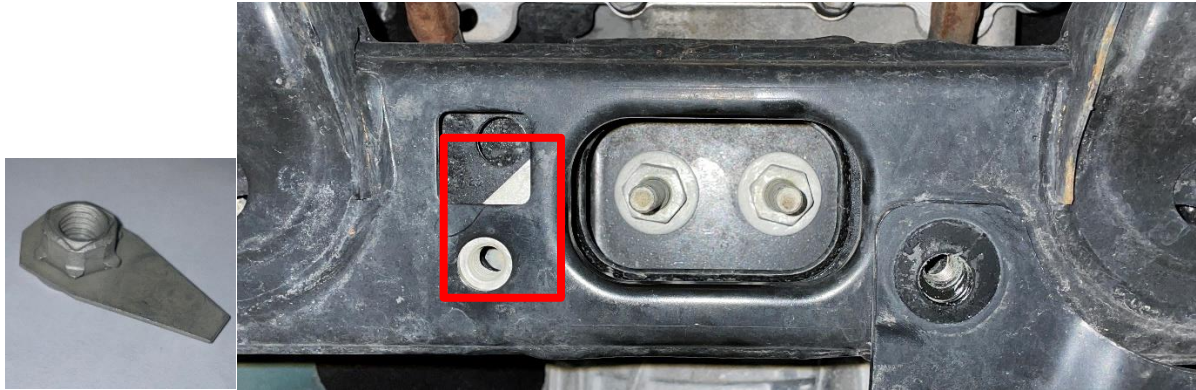
NOTE: Do not install the centermost fastener until installing the transmission skid plate.



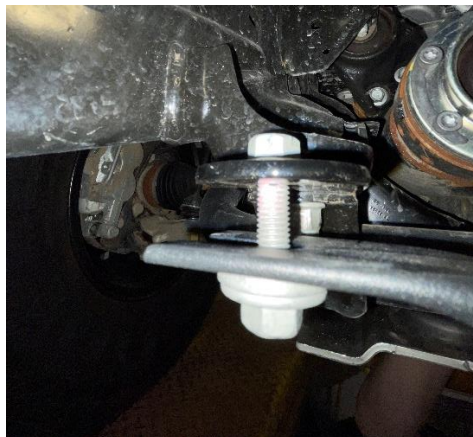
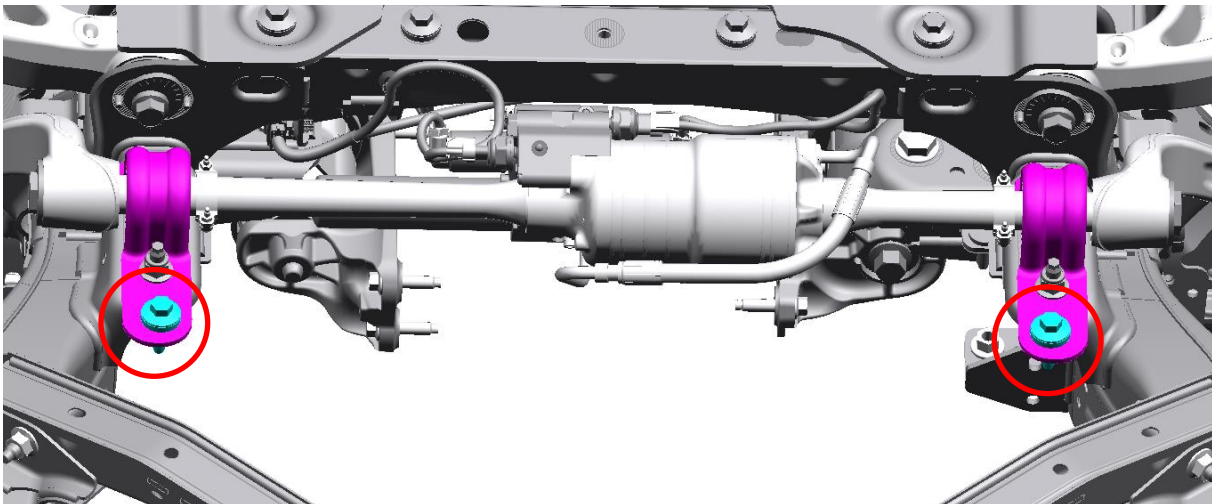
Ford Factory Shop Manual purchase options www.motorcraftservice.com

NO PART OF THIS DOCUMENT MAY BE REPRODUCED WITHOUT PRIOR AGREEMENT AND WRITTEN PERMISSION OF FORD PERFORMANCE PARTS © Ford Motor Company 2020

10. Place the M10 flag nut in position above the drilled hole.



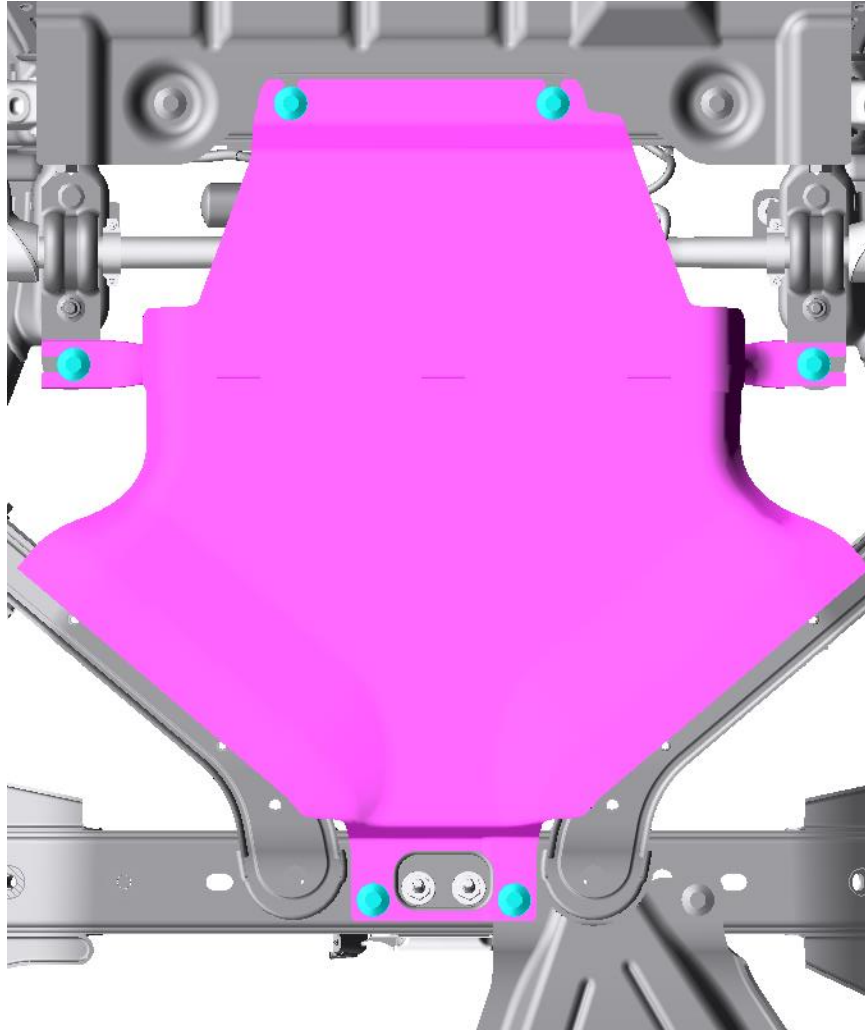
11. On both sides of the stabilizer bar bracket, loosely install two M10x39 fasteners with two M10 nuts in the third hole of the stabilizer bar bracket.



Ford Factory Shop Manual purchase options www.motorcraftservice.com

NO PART OF THIS DOCUMENT MAY BE REPRODUCED WITHOUT PRIOR AGREEMENT AND WRITTEN PERMISSION OF
FORD PERFORMANCE PARTS © Ford Motor Company 2020

12. Install the transmission skid plate using M10x39 fasteners.



13. Tighten all skid plate fasteners.

Torque: 35 ft-lb \pm 5.3 ft-lb (47.5 N-m \pm 7.2 N-m)