



## **Exhaust System Installation Ford Mustang GT, Shelby GT500 & Mustang V6 PN: M-5230-MGTCA\_MGTLA\_MGTCA1\_MV6CA**



**Ford Motor Company recommends that your Ford dealer or professional after market parts installer, who has all the necessary equipment, tools and experienced personnel needed for proper installation, should perform the installation of this system. However, if you decide to perform the installation, we recommend someone should help you. Ensure the installer uses all under car safety precautions including eye protection.**

**Thank you for purchasing a Ford Racing Performance Parts Exhaust Kit.**

**This Ford Racing Performance Parts Exhaust Kits (part numbers M-5230-MGTCA/MGTCA1/MGTLA ) have been designed for Ford Mustang GT equipped with a 5.0L V-8 engine/automatic or manual transmissions and Shelby GT500 equipped with a 5.4L Supercharged V8 engine/manual transmissions.**

**The Ford Racing Performance Parts Exhaust Kit (part number M-5230-MV6CA ) has been designed for Ford Mustang equipped with a 3.7L V6 engine/automatic or manual transmissions.**

**Caution!!! Never work on a hot exhaust system. Serious injury in the form of burns can result** If the vehicle has been in use and the exhaust system is hot, allow vehicle to cool for at least 1 hour. Always wear eye protection when working under any vehicle.

Note: It is our recommendation that you use a hoist or hydraulic lift to facilitate the installation of your new Ford Performance Parts Exhaust Kit. Taking all under car safety precautions, lift the vehicle using a hoist or hydraulic lift. Once this has been done, you may begin the removal of your old exhaust system from your vehicle.

**Note: Before removing the original exhaust system from your vehicle, please compare the parts you have received with the bill of materials provided on the next page to assure that you have all the parts necessary for the installation of your new Ford Racing Performance Parts Exhaust Kit.**

M-523052305230MMMMGTCAAMGTCA

**Minimum Required Tool List:**

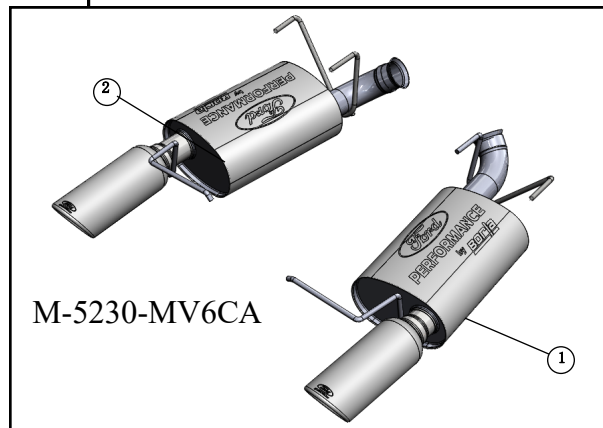
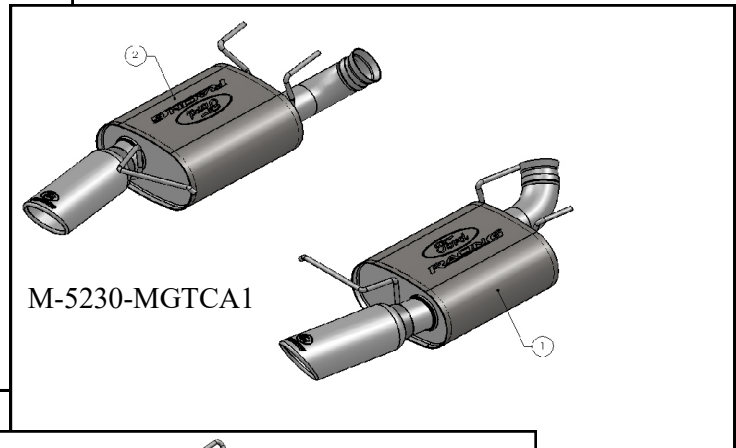
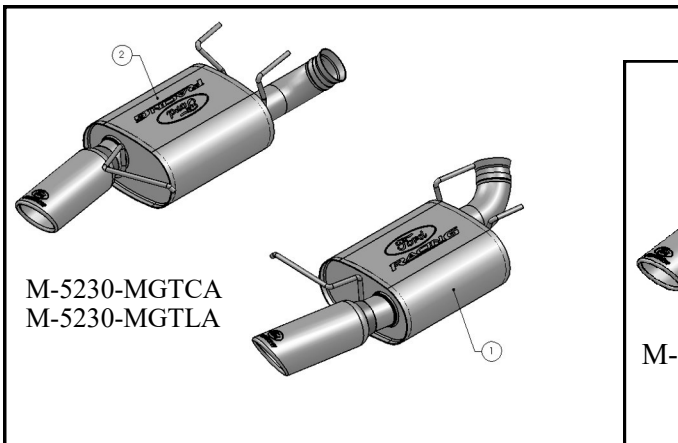
**TOOLS:**

- 1 3/8" Drive Ratchet
- 2 3/8" Drive Extension 3"
- 3 15mm Socket
- 4 Pry Bar
- 5 Flat blade screwdriver

**SHOP SUPPLIES:**

- 1 Spray Lubricant

**Ford Racing Performance Parts Exhaust Kit**  
**Bill of Materials**



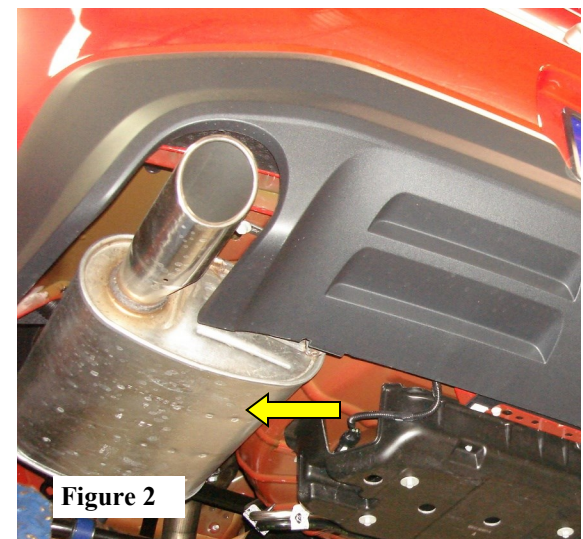
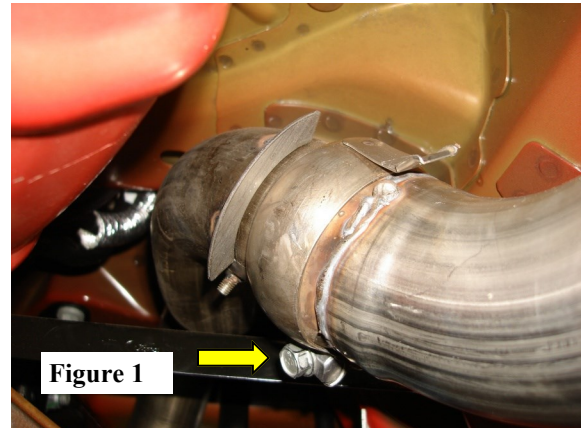
1. R/H muffler assembly
2. L/H muffler assembly

## Original Exhaust System Removal

*Note: With a used vehicle, we suggest a penetrating spray lubricant to be applied liberally to all exhaust fasteners and allowing a significant period of time for the chemical to lubricate the threads before attempting to disassemble.*

1. Lubricate hangers and rubber isolators on the rear mufflers.
2. Loosen the passenger side ball-clamp behind the rear axle pipe and carefully remove right-side muffler from hangars. (See Fig. 1)
3. Repeat above step for left-side muffler. (See Fig. 2)

**Warning:** Use extreme caution during installation. Torque all fasteners according to manufacturer's torque values and tightening sequence. **DO NOT** use air impact tools to tighten fasteners on Ford Racing Performance Parts Exhaust. Use of such tools may result in bent flanges or gasket contact areas leading to exhaust leaks.

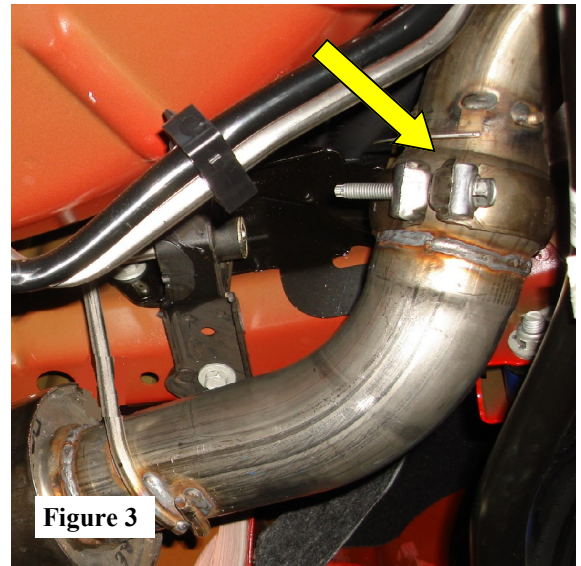


## Ford Racing Performance Parts Exhaust Kit System Installation

1. Place a clamp over the expanded end of the (driver-side) L/H muffler assembly and set it up into position installing the hangers into the rubber isolators. (See Fig. 3)
2. Repeat step 2 for the installation of the (passenger-side) R/H muffler assembly.
3. Check your exhaust system for proper clearance under the vehicle and also for tip alignment. (See Figs. 4)
4. Once position has been determined to be correct, tighten the Accuseal™ clamps to 32-35 ft. lbs.
7. Before starting your vehicle, make sure to check all wires, hoses, brake lines, body parts and tires for safe clearance from the exhaust system.
8. Start vehicle and check for any leaks. If any leaks are found, determine cause (such as loose or incorrectly positioned clamp) and repair as necessary.

*Note: When you first start your vehicle after the installation of your new Ford Racing Performance Parts Exhaust, there may be some smoke and fumes coming from the system. This is a protective oil based coating used in the manufacturing of mandrel bent performance exhaust tubing. This is not a problem and will disappear within a very short period of time after the exhaust has reached normal operating temperatures.*

**Congratulations!** You have completed the installation of the world famous Ford Racing Performance Parts Exhaust Kit



**Figure 3**



**Figure 4**