



## M-BRONCO-W6 Coastal Package

2025MY Bronco 2-Door Base, Big Bend, Black Diamond, and Outer Banks Trim Series

NO PART OF THIS DOCUMENT MAY BE REPRODUCED WITHOUT PRIOR AGREEMENT AND WRITTEN PERMISSION OF  
FORD PERFORMANCE PARTS © Ford Motor Company 2020

**PRIOR TO INSTALLATION READ THESE INSTRUCTION COMPETELY**  
**For questions, Call the FORD PERFORMANCE Techline 1-800-367-3788**

Please visit <https://www.performanceparts.ford.com> for warranty information



**DISCLAIMER: Vehicle shown with extra equipment.**

Ford Factory Shop Manual purchase options [www.motorcraftservice.com](http://www.motorcraftservice.com)



## M-BRONCO-W6

### Coastal Package

2025MY Bronco 2-Door Base, Big Bend, Black Diamond, and Outer Banks Trim Series

NO PART OF THIS DOCUMENT MAY BE REPRODUCED WITHOUT PRIOR AGREEMENT AND WRITTEN PERMISSION OF  
FORD PERFORMANCE PARTS © Ford Motor Company 2020

#### Package contents:

<u>Description</u>	<u>Quantity</u>
Iconic Silver Grille	1
Iconic Silver Fender Flare Kit	1
Bimini Top	1
Coastal Graphics	1
Iconic Silver Wheel Kit	1
Offroad Suspension 2" Lift Kit	1
ProCal 4	1

#### Installation Section:

1. [Grille](#)
2. [Fender Flares](#)
3. [Bimini Top](#)
4. [Graphics](#)
5. [Suspension](#)
6. [Service Procedures](#)
7. [ProCal 4](#)

Ford Factory Shop Manual purchase options [www.motorcraftservice.com](http://www.motorcraftservice.com)

NO PART OF THIS DOCUMENT MAY BE REPRODUCED WITHOUT PRIOR AGREEMENT AND WRITTEN PERMISSION OF  
FORD PERFORMANCE PARTS © Ford Motor Company 2020

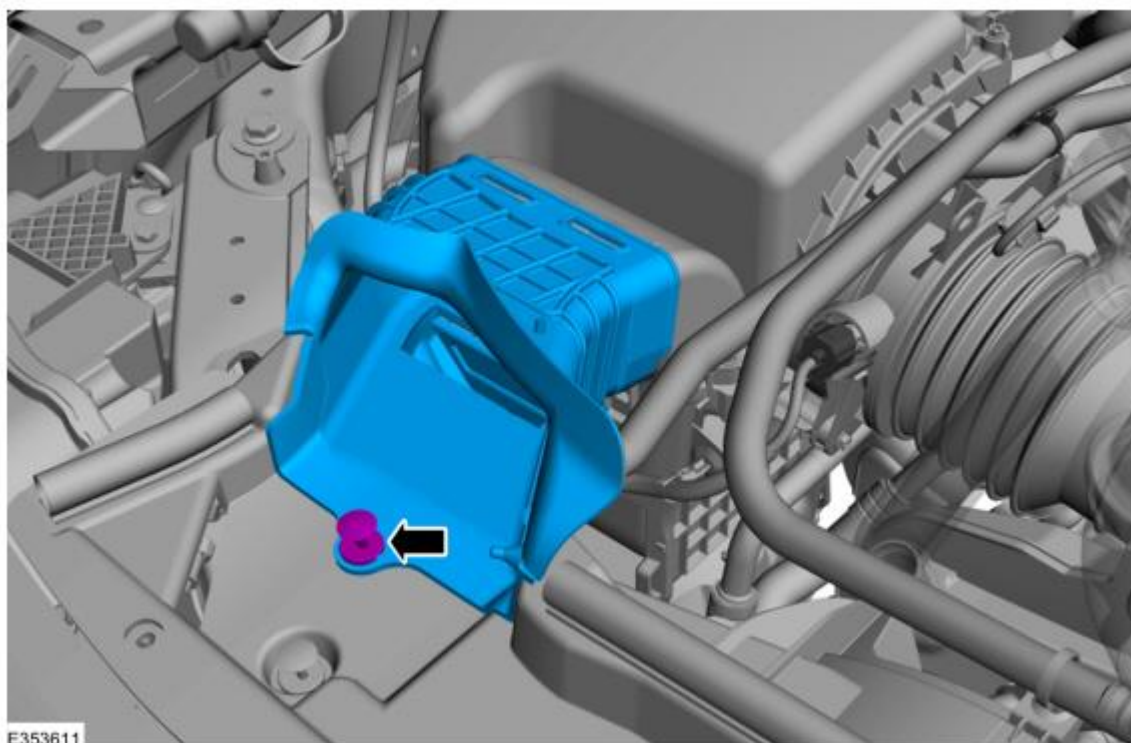
## 1. Grille

### Removal

**NOTE:** Removal steps in this procedure may contain installation details.

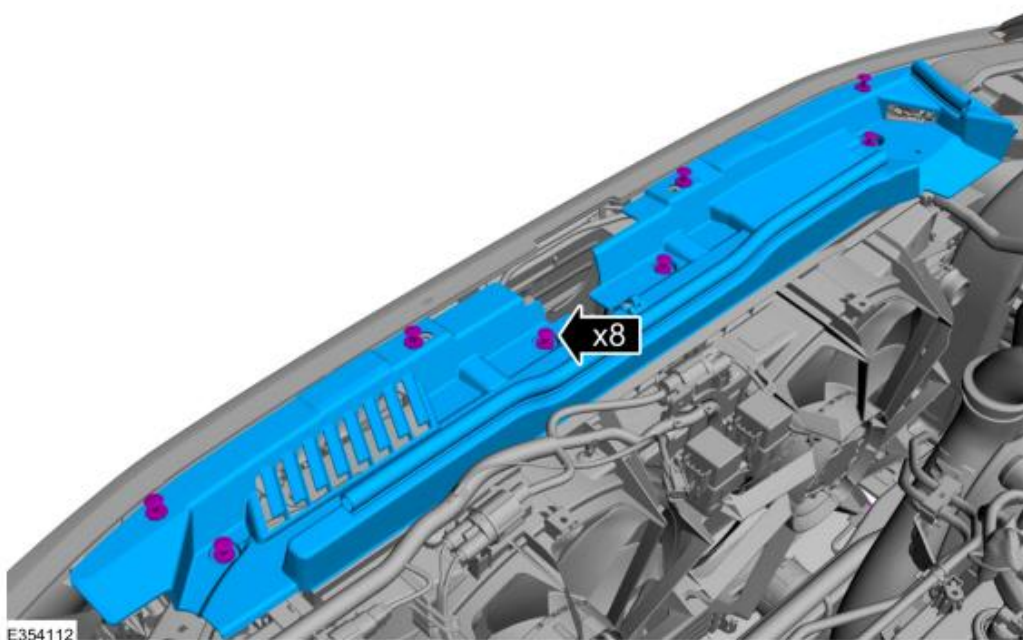
### All vehicles

1. Remove the fastener and the air intake duct.



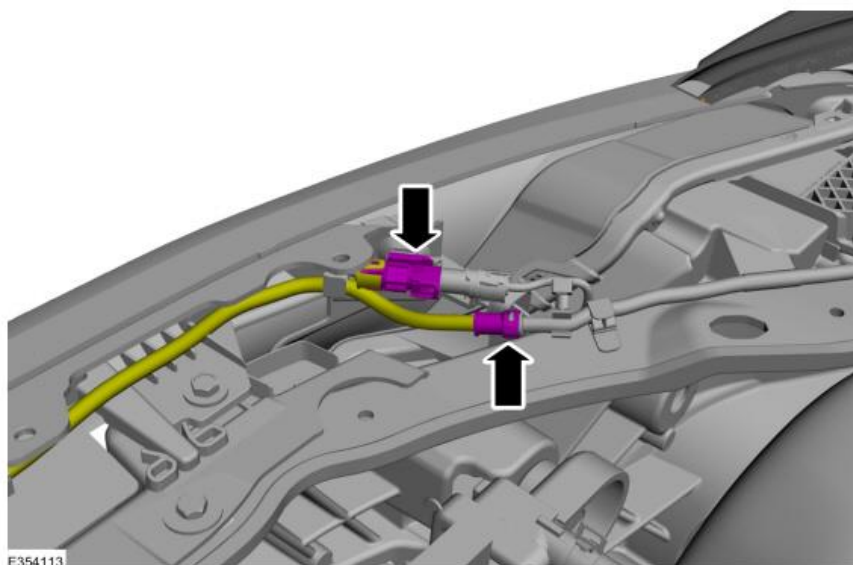
NO PART OF THIS DOCUMENT MAY BE REPRODUCED WITHOUT PRIOR AGREEMENT AND WRITTEN PERMISSION OF  
FORD PERFORMANCE PARTS © Ford Motor Company 2020

2. Remove the pushpins and the radiator upper shield.



**Vehicle equipped with camera**

3. Disconnect the electrical connector and camera washer hose.



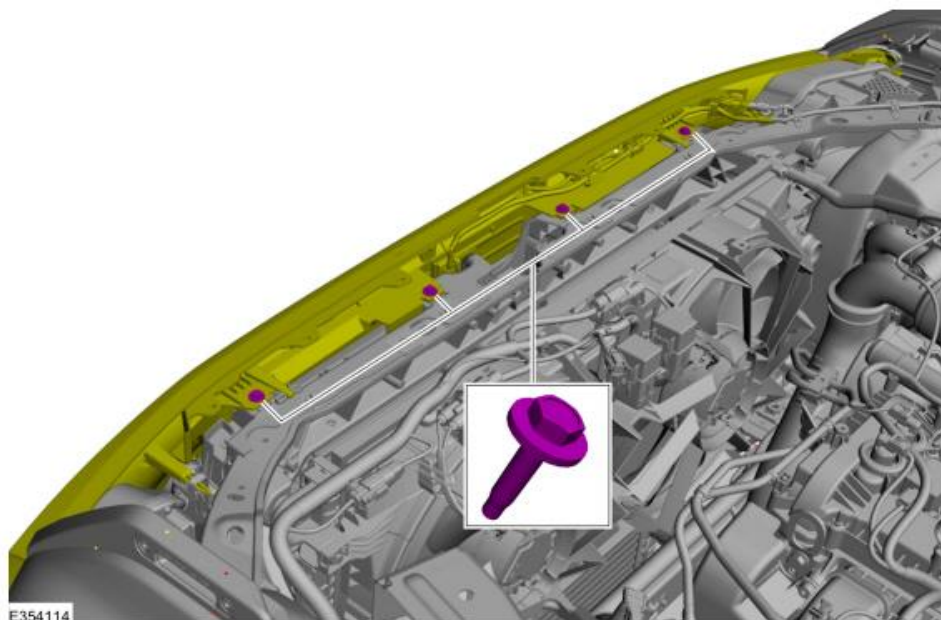
Ford Factory Shop Manual purchase options [www.motorcraftservice.com](http://www.motorcraftservice.com)



NO PART OF THIS DOCUMENT MAY BE REPRODUCED WITHOUT PRIOR AGREEMENT AND WRITTEN PERMISSION OF  
FORD PERFORMANCE PARTS © Ford Motor Company 2020

**All vehicles**

4. Remove the bolts. *Torque: 42 lb.in (4.8 Nm)*



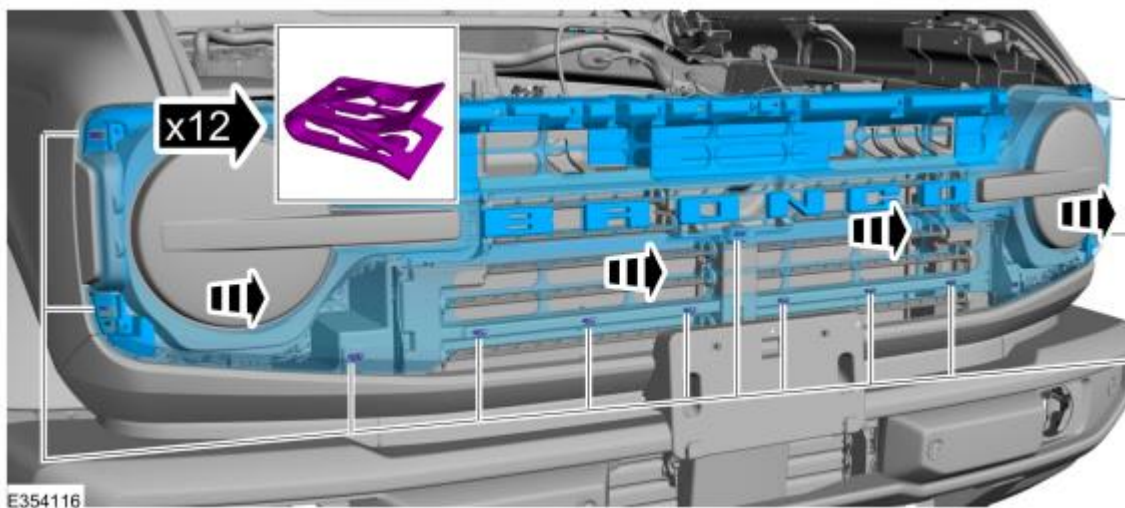
5. If equipped, remove the bolts and front bumper bar.



Ford Factory Shop Manual purchase options [www.motorcraftservice.com](http://www.motorcraftservice.com)

NO PART OF THIS DOCUMENT MAY BE REPRODUCED WITHOUT PRIOR AGREEMENT AND WRITTEN PERMISSION OF  
FORD PERFORMANCE PARTS © Ford Motor Company 2020

6. Disengage the clips and pull off the radiator grille.



#### Installation

1. To install, reverse the removal procedure.

NO PART OF THIS DOCUMENT MAY BE REPRODUCED WITHOUT PRIOR AGREEMENT AND WRITTEN PERMISSION OF  
FORD PERFORMANCE PARTS © Ford Motor Company 2020

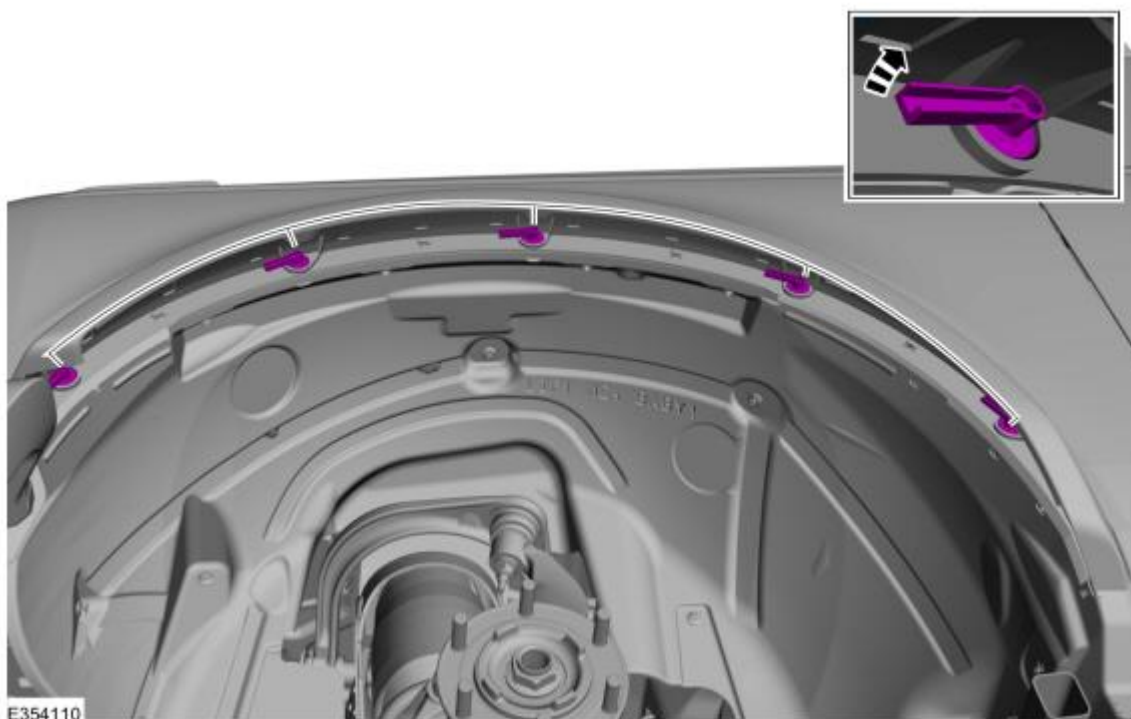
## 2. Fender Flares

### Removal

**NOTE:** Removal steps in this procedure may contain installation details.

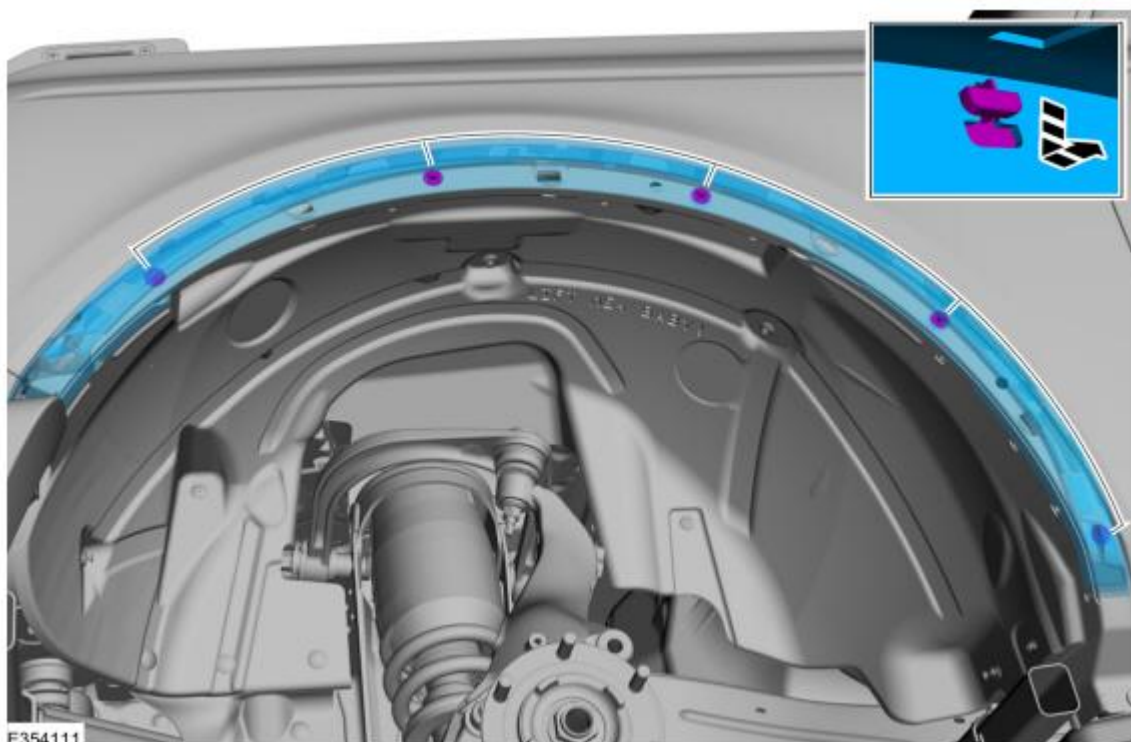
**NOTE:** Front LH side shown, all sides similar.

1. Turn and remove the levers.



NO PART OF THIS DOCUMENT MAY BE REPRODUCED WITHOUT PRIOR AGREEMENT AND WRITTEN PERMISSION OF  
FORD PERFORMANCE PARTS © Ford Motor Company 2020

2. Dislodge the trim pins and remove the fender moulding.



#### Installation

1. Reverse the removal process with the new fender flares.



NO PART OF THIS DOCUMENT MAY BE REPRODUCED WITHOUT PRIOR AGREEMENT AND WRITTEN PERMISSION OF  
FORD PERFORMANCE PARTS © Ford Motor Company 2020

### 3. Bimini Top

Before installation, remove top from vehicle (see vehicle owner's manual).

NOTE: The Hardtop or Softtop options cannot be installed while the Tonneau cover is installed.

Antes de la instalación, retire la parte superior del vehículo (consulte el manual del propietario del vehículo).

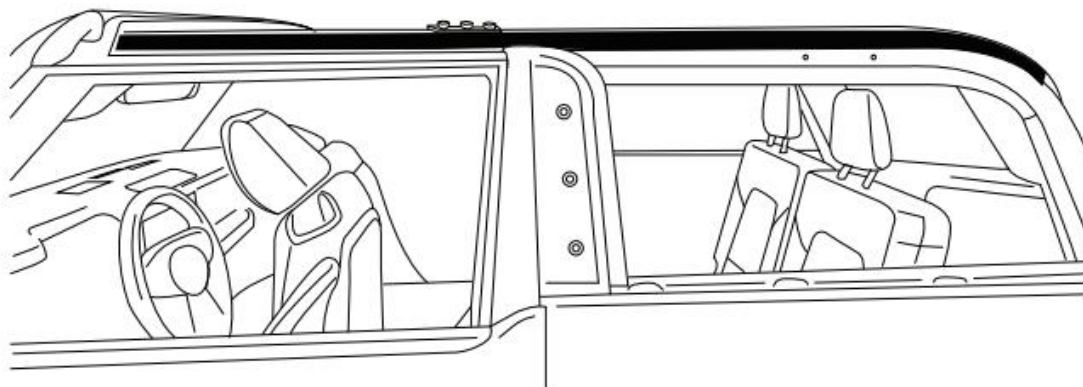
NOTA: Las opciones techo duro o techo suave no se pueden instalar mientras la cubierta Tonneau está instalada.

Avant l'installation, retirez le toit du véhicule (voir le manuel du propriétaire du véhicule).

REMARQUE : Les options toit rigide ou toit doux ne peuvent pas être installées lorsque le couvre-caisse est installé.



1



Install velcro strips to the sides of the Sport Bar prior to installing the Bimini cover.

Instale tiras de velcro a los lados de la barra deportiva antes de instalar la cubierta Bimini.

Installez les bandes velcro sur les côtés de la barre sport avant d'installer la couverture Bimini.

2

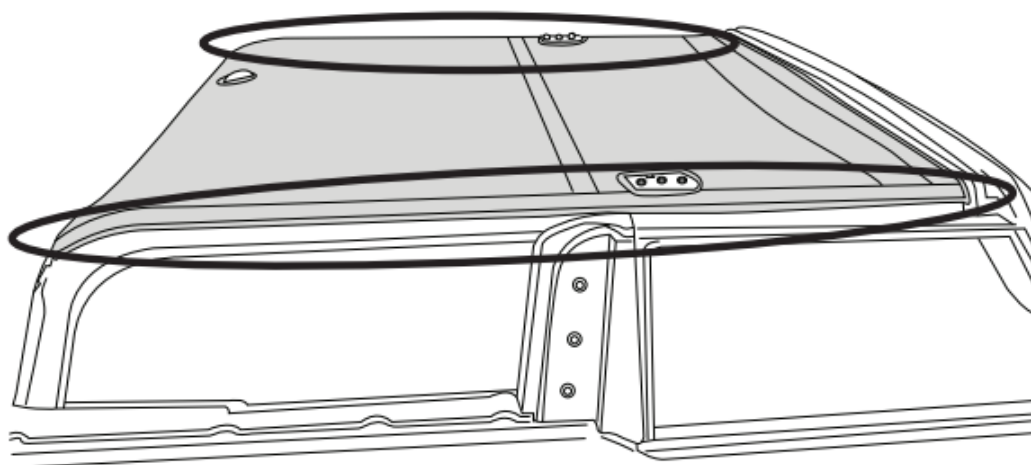
Ford Factory Shop Manual purchase options [www.motorcraftservice.com](http://www.motorcraftservice.com)

NO PART OF THIS DOCUMENT MAY BE REPRODUCED WITHOUT PRIOR AGREEMENT AND WRITTEN PERMISSION OF  
FORD PERFORMANCE PARTS © Ford Motor Company 2020

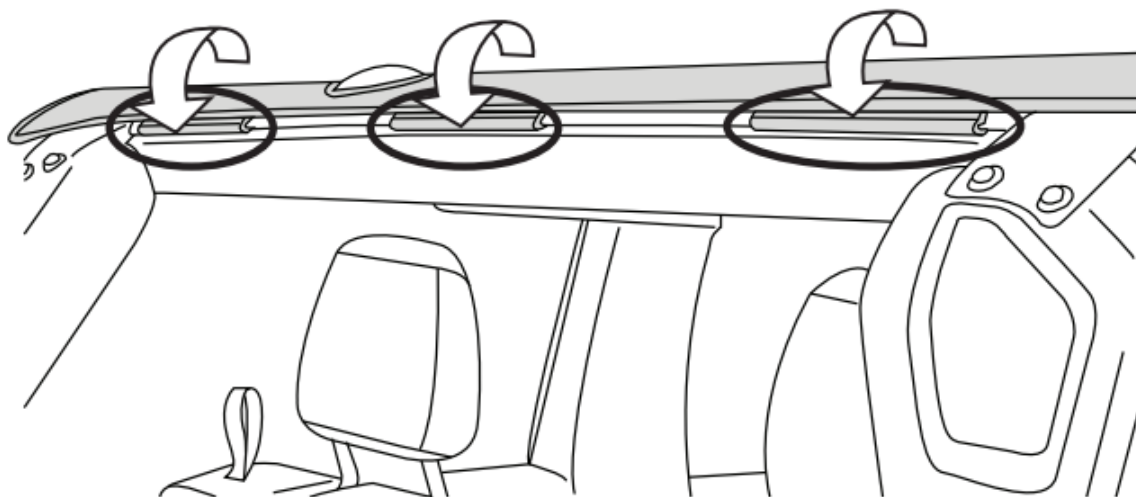
Attach hook velcro on the Bimini cover to the newly installed loop velcro strips.

Fije el velcro de gancho en la cubierta Bimini a las tiras de velcro de bucle recién instaladas.

Fixez le velcro à crochet sur la couverture Bimini aux bandes velcro à boucle nouvellement installées.



**3**



Secure the rear clips to the rear edge of the cross bar.

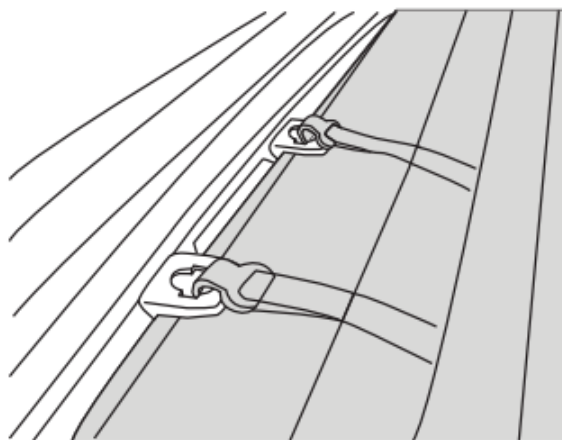
Asegure los ganchos traseros al borde trasero de la barra transversal.

Fixez les crochets arrière au bord arrière de la barre transversale.

**4**

Ford Factory Shop Manual purchase options [www.motorcraftservice.com](http://www.motorcraftservice.com)

NO PART OF THIS DOCUMENT MAY BE REPRODUCED WITHOUT PRIOR AGREEMENT AND WRITTEN PERMISSION OF  
FORD PERFORMANCE PARTS © Ford Motor Company 2020

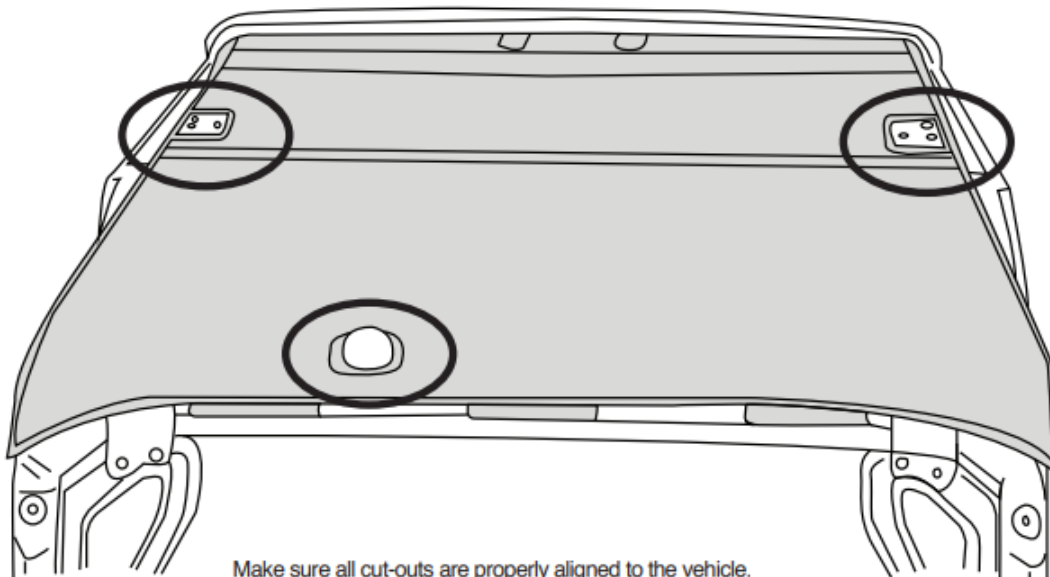


Attach hooks to the holes in the tabs located on the front edge of the cross bar.

Coloque ganchos en los orificios de las lengüetas ubicadas en el borde frontal de la barra transversal.

Fixez les crochets aux trous des languettes situées sur le bord avant de la barre transversale.

5



Make sure all cut-outs are properly aligned to the vehicle.

Asegúrese de que todos los recortes estén correctamente alineados con el vehículo.

Assurez-vous que toutes les découpes sont correctement alignées sur le véhicule.

6

Ford Factory Shop Manual purchase options [www.motorcraftservice.com](http://www.motorcraftservice.com)

NO PART OF THIS DOCUMENT MAY BE REPRODUCED WITHOUT PRIOR AGREEMENT AND WRITTEN PERMISSION OF  
FORD PERFORMANCE PARTS © Ford Motor Company 2020

#### 4. Graphics

**A**



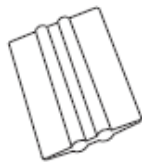
**B**

#### TOOLS REQUIRED

SOAP AND WATER SOLUTION



SQUEEGEE



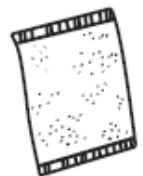
KNIFE



ALCOHOL WIPES



SOFT CLOTH



Ford Factory Shop Manual purchase options [www.motorcraftservice.com](http://www.motorcraftservice.com)

NO PART OF THIS DOCUMENT MAY BE REPRODUCED WITHOUT PRIOR AGREEMENT AND WRITTEN PERMISSION OF  
FORD PERFORMANCE PARTS © Ford Motor Company 2020

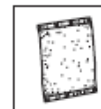
1



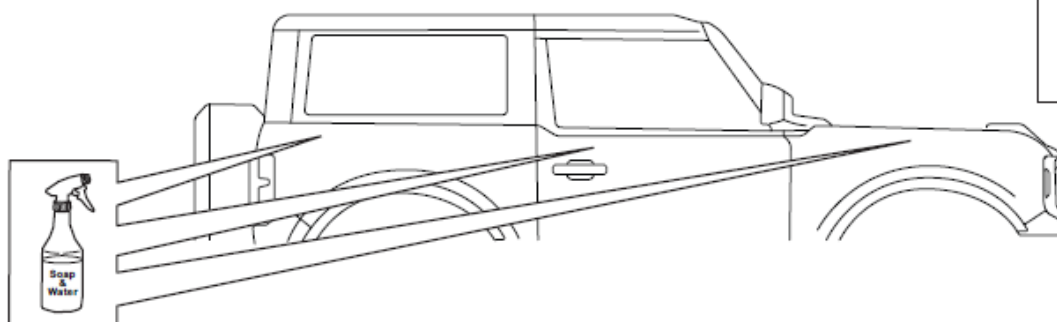
NOTE: THE ROOM TEMPERATURE AND SURFACE TEMPERATURE MUST  
BE NO LOWER THAN 68 DEGREES FAHRENHEIT (20° C) OR HIGHER THAN  
90 DEGREES FAHRENHEIT (32° C) TO ENSURE PROPER INSTALLATION.

2

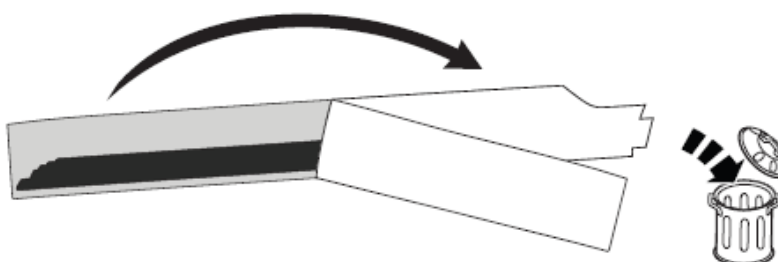
NOTE: CLEAN SURFACE WITH NAPHTHA BASE  
CLEANER TO REMOVE DIRT AND GREASE.  
REMOVE RESIDUE FROM AREA AND ALLOW  
AREA TO DRY THOROUGHLY.



3



4



Ford Factory Shop Manual purchase options [www.motorcraftservice.com](http://www.motorcraftservice.com)





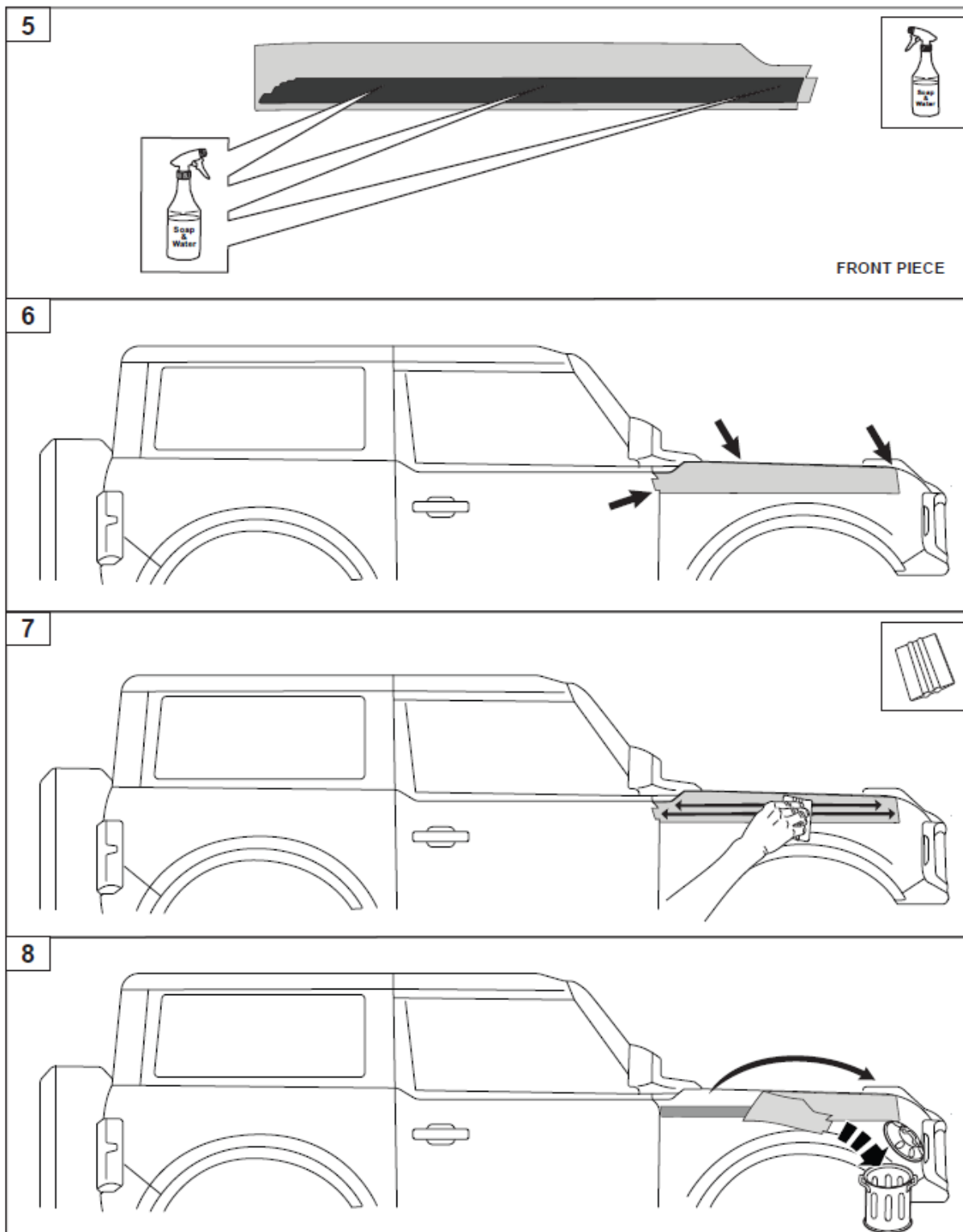
FORD PERFORMANCE

## M-BRONCO-W6

### Coastal Package

2025MY Bronco 2-Door Base, Big Bend, Black Diamond, and Outer Banks Trim Series

NO PART OF THIS DOCUMENT MAY BE REPRODUCED WITHOUT PRIOR AGREEMENT AND WRITTEN PERMISSION OF  
FORD PERFORMANCE PARTS © Ford Motor Company 2020



Ford Factory Shop Manual purchase options [www.motorcraftservice.com](http://www.motorcraftservice.com)



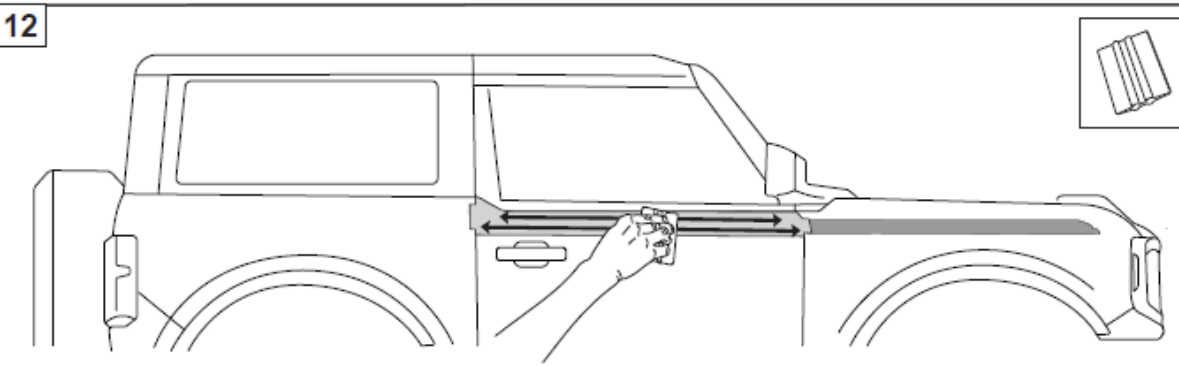
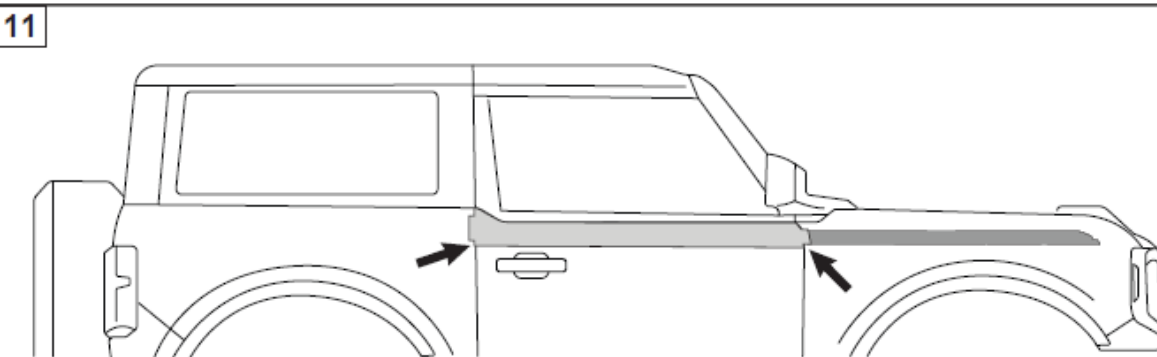
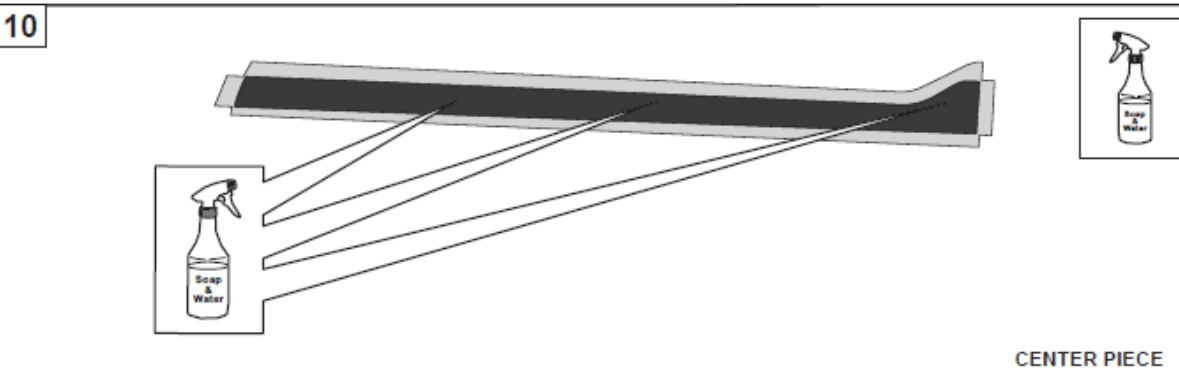
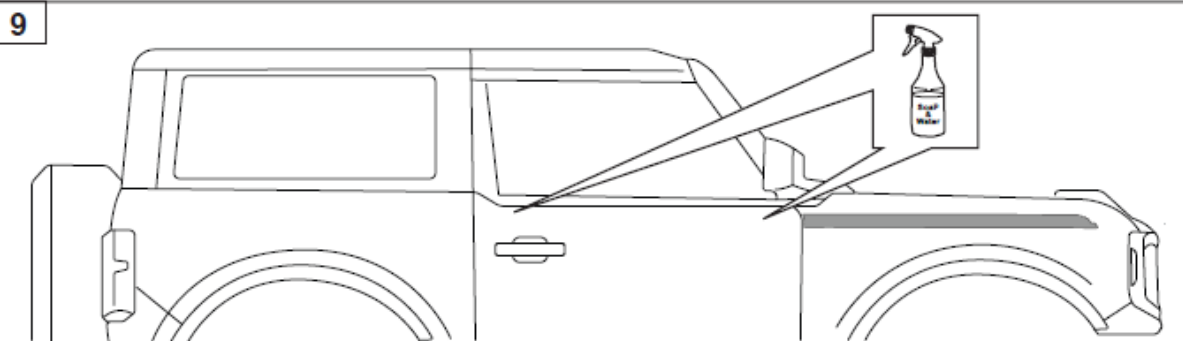
FORD PERFORMANCE

## M-BRONCO-W6

### Coastal Package

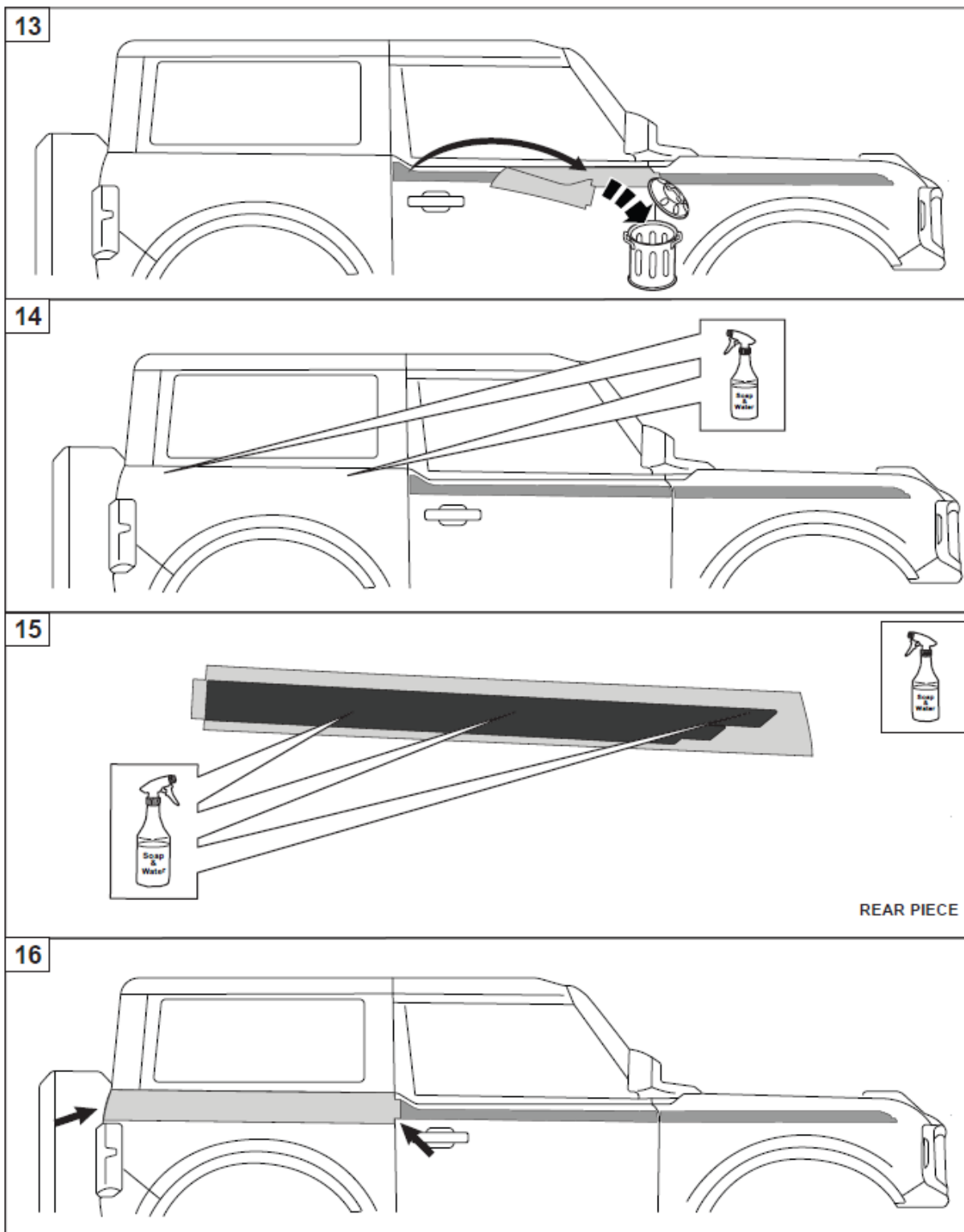
2025MY Bronco 2-Door Base, Big Bend, Black Diamond, and Outer Banks Trim Series

NO PART OF THIS DOCUMENT MAY BE REPRODUCED WITHOUT PRIOR AGREEMENT AND WRITTEN PERMISSION OF  
FORD PERFORMANCE PARTS © Ford Motor Company 2020



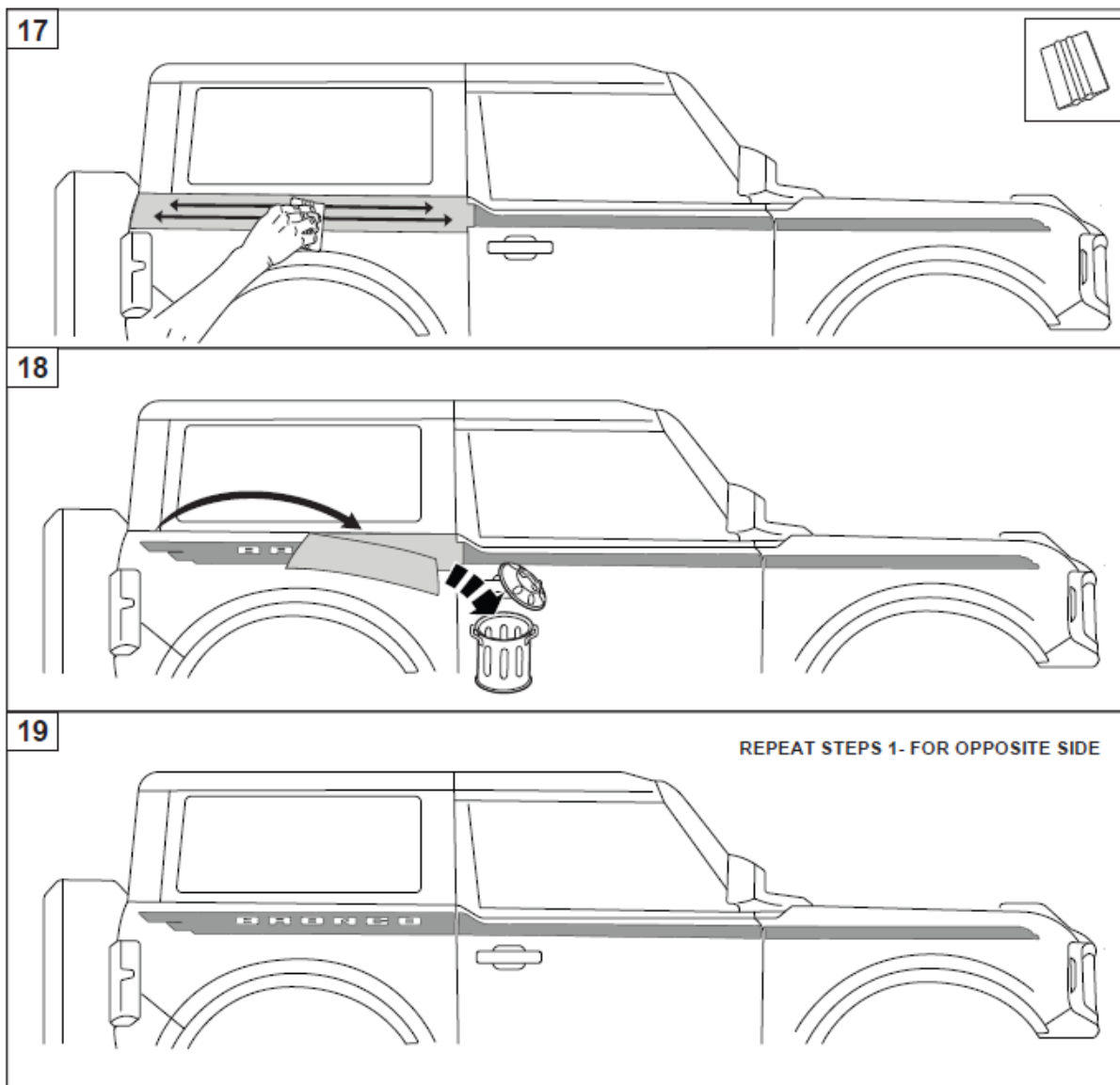
Ford Factory Shop Manual purchase options [www.motorcraftservice.com](http://www.motorcraftservice.com)

NO PART OF THIS DOCUMENT MAY BE REPRODUCED WITHOUT PRIOR AGREEMENT AND WRITTEN PERMISSION OF  
FORD PERFORMANCE PARTS © Ford Motor Company 2020



Ford Factory Shop Manual purchase options [www.motorcraftservice.com](http://www.motorcraftservice.com)

NO PART OF THIS DOCUMENT MAY BE REPRODUCED WITHOUT PRIOR AGREEMENT AND WRITTEN PERMISSION OF  
FORD PERFORMANCE PARTS © Ford Motor Company 2020



NO PART OF THIS DOCUMENT MAY BE REPRODUCED WITHOUT PRIOR AGREEMENT AND WRITTEN PERMISSION OF  
FORD PERFORMANCE PARTS © Ford Motor Company 2020

## **5. Suspension**

### **Kit includes:**

- 2 Assembled Front Coil-Over Shock Assemblies
- 2 Assembled Front Coil-Over Shock Assemblies
- 12 Upper Shock Nut
- 2 Half Shaft Nut
- 2 Stabilizer Bar Link Nut
- 2 Outer Tie Rod End Nut
- 2 Front Upper Control Arm Ball Joint Nut
- 2 Rear Shock Bolt
- 2 Rear Lower Shock Nut

### **Sections:**

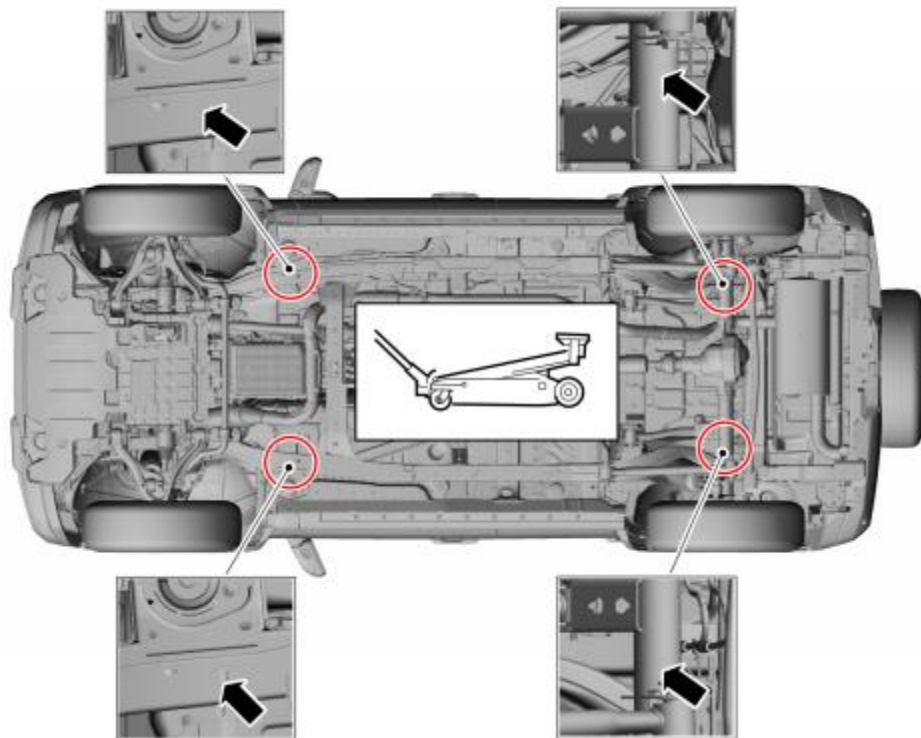
- a. Jacking and Lifting Points
- b. Front Assembly Removal
- c. Rear Assembly Removal
- d. Front Assembly Installation
- e. Rear Assembly Installation
- f. Tire and Wheel Installation
- g. Wheel Alignment
- h. Headlight and Fog Light Aim Adjustment
- i. Cruise Control Radar Alignment
- j. Front Bumper Removal (For Cruise Control Radar)
- k. Fastener Torque Specifications



NO PART OF THIS DOCUMENT MAY BE REPRODUCED WITHOUT PRIOR AGREEMENT AND WRITTEN PERMISSION OF  
FORD PERFORMANCE PARTS © Ford Motor Company 2020

## Jacking and Lifting Points

### Jacking Points



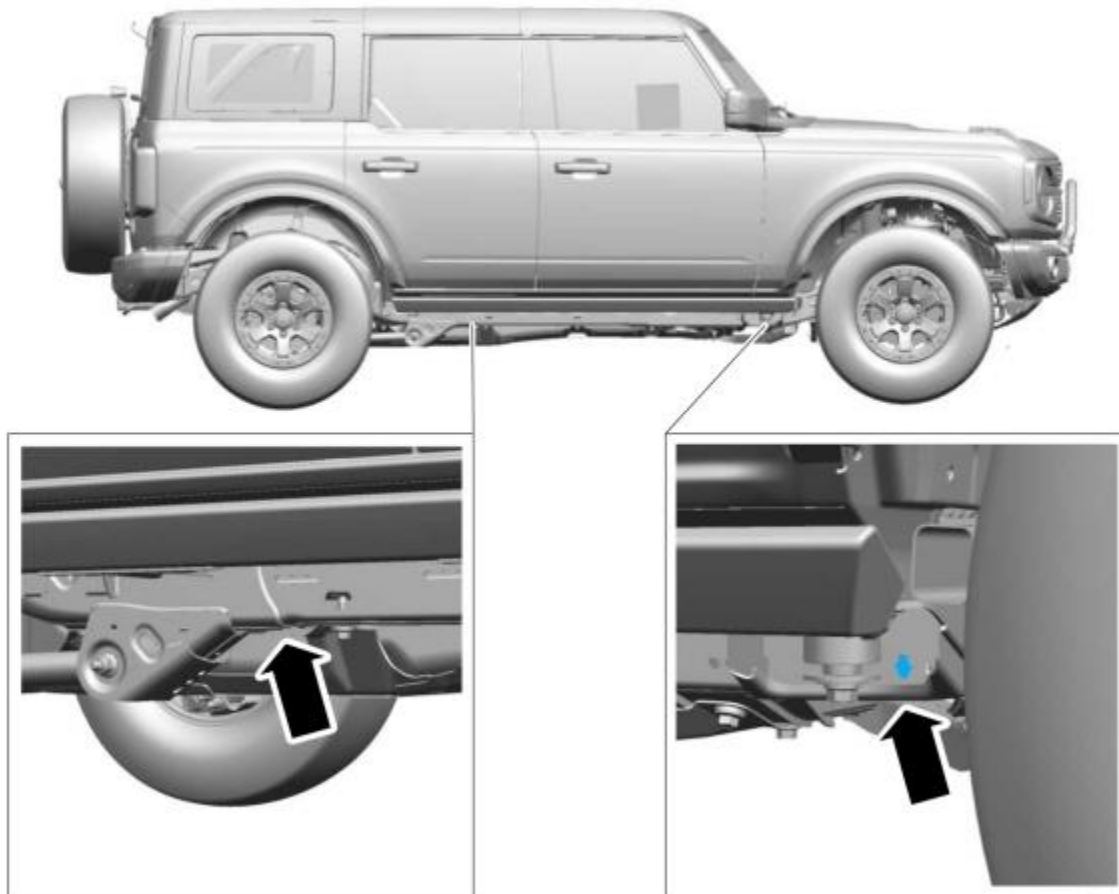
E354387

**NOTE:** 4-door shown, 2-door similar.

Only the specified jacking points may be used for jacking and supporting the vehicle.

NO PART OF THIS DOCUMENT MAY BE REPRODUCED WITHOUT PRIOR AGREEMENT AND WRITTEN PERMISSION OF  
FORD PERFORMANCE PARTS © Ford Motor Company 2020

### Lifting Points




E348909


**NOTE:** 4-door shown, 2-door similar.


**NOTE:** RH side shown, LH side similar.


The lifting points for both the 2 and 4-door variants are aft of the front wheels on the chassis frame as indicated, and fore of the suspension rear trailing arm on the chassis frame.


NO PART OF THIS DOCUMENT MAY BE REPRODUCED WITHOUT PRIOR AGREEMENT AND WRITTEN PERMISSION OF  
FORD PERFORMANCE PARTS © Ford Motor Company 2020


 **WARNING:** Before raising the vehicle on a hoist, make sure the hoist capacity is adequate for the vehicle weight, including any vehicle cargo or modifications. Always position the hoist lift arms as shown in section 100-02 of this manual. Do not use the engine to power the drive wheels unless all drive wheels are elevated off the ground. Incorrect hoist arm positioning or drive wheels in contact with the ground can cause unintended vehicle movement. Failure to follow these instructions may result in serious personal injury or death.

 **WARNING:** Position the hoist lift arms as shown in the illustration. Incorrect positioning could result in vehicle slipping or falling from the hoist. Failure to follow this instruction may result in serious personal injury.

 **WARNING:** Never get underneath a vehicle that is supported only by a jack. The jack could unintentionally lower. Always support vehicle with floor stands. Failure to follow these instructions may result in serious personal injury.

 **WARNING:** Identify the correct jacking points by locating the triangle stamped into the uni-body sheet metal or vehicle frame or molded into the body rocker moulding. Raising a vehicle in any other location may result in vehicle shifting or falling. Failure to follow this instruction may result in serious personal injury.

 **WARNING:** Only raise the vehicle when positioned on a hard, level surface. Attempting to raise the vehicle on an uneven or soft surface may result in vehicle slipping or falling from the jack or jackstand. Failure to follow this instruction may result in serious personal injury.

 **WARNING:** When jacking or lifting the vehicle, block all wheels remaining on the ground. Set the parking brake if the rear wheels will remain on the ground. These actions help prevent unintended vehicle movement. Failure to follow these instructions may result in serious personal injury.

**NOTICE:** The jack provided with the vehicle is intended to be used in an emergency for changing a deflated tire. To avoid damage to the vehicle, never use the jack to hoist the vehicle for any other purpose.

**NOTICE:** Do not attempt to jacking on the front bumper or the rear bumper on any vehicle. Damage to bumper covers will occur.

**NOTICE:** Do not attempt to jacking on the front control arm or rear control arm on any vehicle. Damage to control arms may occur.

**NOTICE:** Do not use the differential housing as a lift point. Leaks or damage to the rear axle cover and adjoining differential housing surface may occur if a floor jack or any lifting device is allowed to contact the cover at any point where the cover joins the housing.

**NOTICE:** Place blocks underneath the lifting points if a two-column hoist is used.

**NOTICE:** Damage to the suspension, exhaust or steering linkage components may occur if care is not exercised when positioning the hoist adapters prior to lifting the vehicle.

**NOTICE:** To prevent possible damage to the underbody, do not drive the vehicle onto the drive-on lift without first checking for possible interference.

**NOTICE:** When raising a vehicle on a two-column hoist, use care when positioning the vehicle so that the hoisting forks do not interfere with suspension components, mounting brackets or stabilizer mounting brackets, if equipped. In addition, use care in hoist positioning to avoid possible damage to the axle or rear cover.

NO PART OF THIS DOCUMENT MAY BE REPRODUCED WITHOUT PRIOR AGREEMENT AND WRITTEN PERMISSION OF  
 FORD PERFORMANCE PARTS © Ford Motor Company 2020

## Shock Absorber and Spring Assembly

### Special Tool(s) / General Equipment

Vehicle/Axle Stands

### Front Shock Absorber and Spring Assembly Removal

**NOTICE:** Suspension fasteners are critical parts that affect the performance of vital components and systems. Failure of these fasteners may result in major service expense. Use the same or equivalent parts if replacement is necessary. Do not use a replacement part of lesser quality or substitute design. Tighten fasteners as specified.

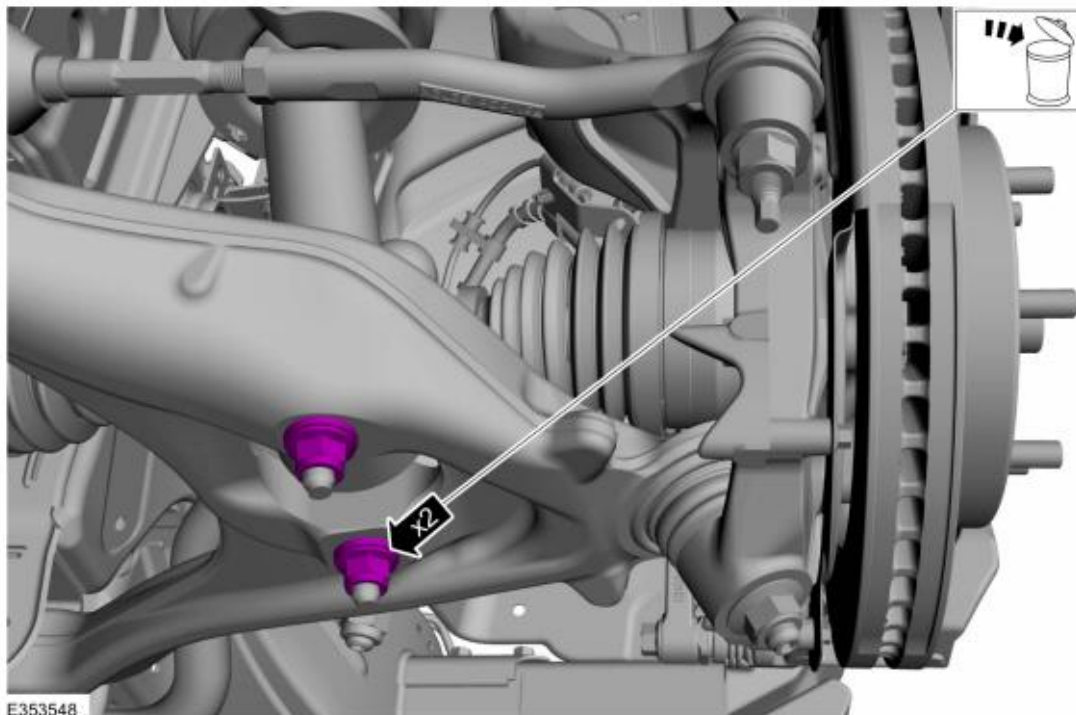
**NOTE:** Removal steps in this procedure may contain installation details.

Measure and record the distance from the center of the hub to the lip of the fender with the vehicle in a level, static ground position (curb height).

Remove the wheel and tire.

Refer to: Wheel and Tire Removal and Installation.

Remove and discard the shock absorber assembly lower nuts.



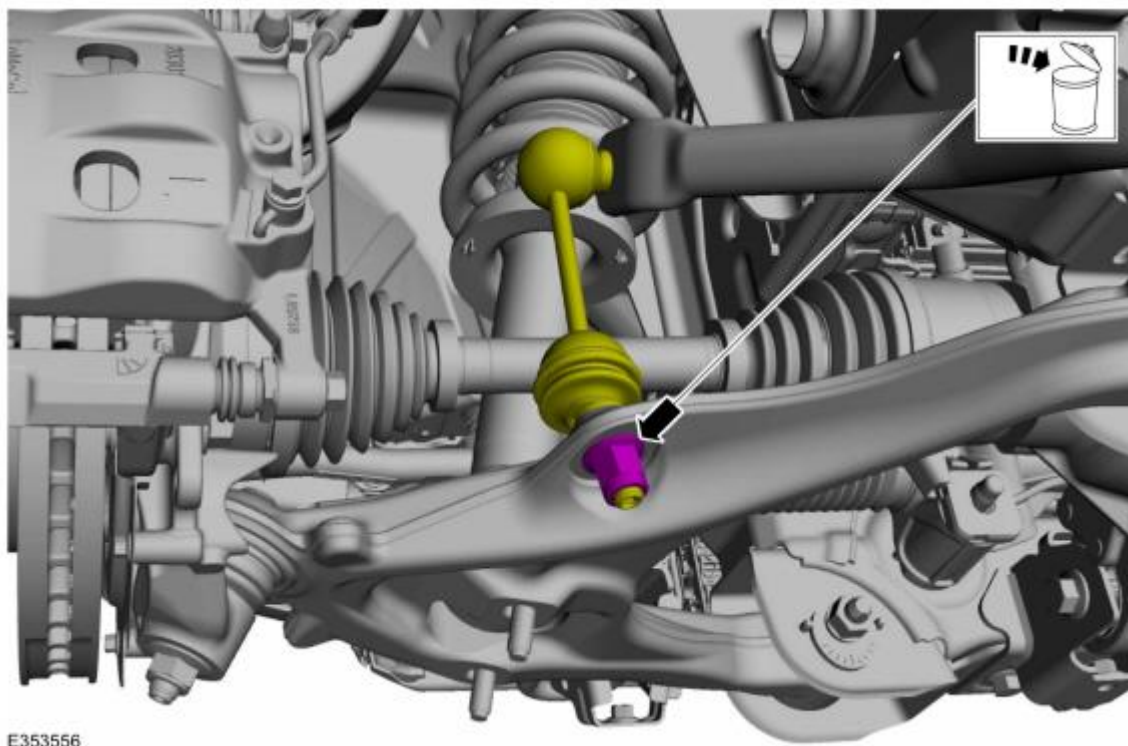
Ford Factory Shop Manual purchase options [www.motorcraftservice.com](http://www.motorcraftservice.com)

NO PART OF THIS DOCUMENT MAY BE REPRODUCED WITHOUT PRIOR AGREEMENT AND WRITTEN PERMISSION OF  
FORD PERFORMANCE PARTS © Ford Motor Company 2020

**NOTE:** *The stabilizer bar links are designed with low friction ball joints that have a low breakaway torque.*

**NOTE:** *Use the hex-holding feature to prevent the stud from turning while removing the nuts.*

Remove and discard the stabilizer bar link lower nut.



Remove the wheel knuckle.

Refer to: Front Wheel Bearing and Hub Removal

Refer to: Wheel Knuckle Removal



NO PART OF THIS DOCUMENT MAY BE REPRODUCED WITHOUT PRIOR AGREEMENT AND WRITTEN PERMISSION OF  
FORD PERFORMANCE PARTS © Ford Motor Company 2020

## Front Wheel Bearing and Wheel Hub Removal

### Special Tool(s) / General Equipment

## Puller

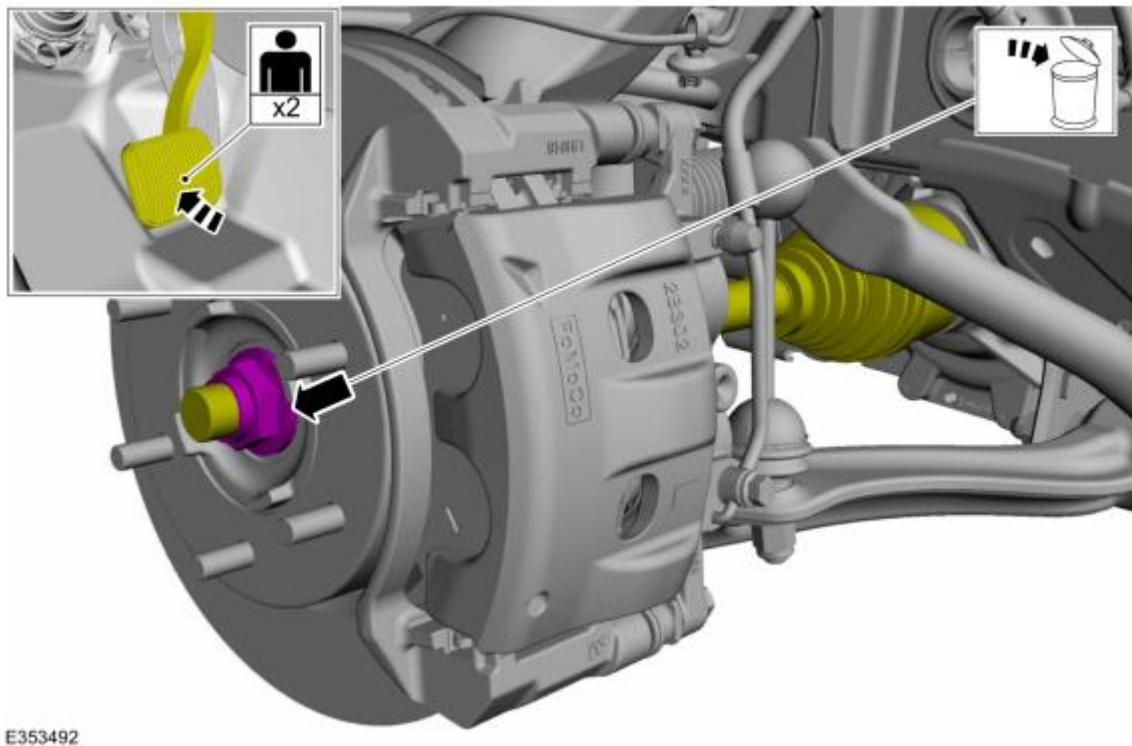
## Removal

**NOTICE: Suspension fasteners are critical parts that affect the performance of vital components and systems. Failure of these fasteners may result in major service expense. Use the same or equivalent parts if replacement is necessary. Do not use a replacement part of lesser quality or substitute design. Tighten fasteners as specified.**

**NOTE:** *This step requires the aid of another technician.*

**NOTE:** *Apply the brake to prevent the halfshaft from rotating while loosening the wheel hub nut.*

Remove and discard the wheel hub nut.

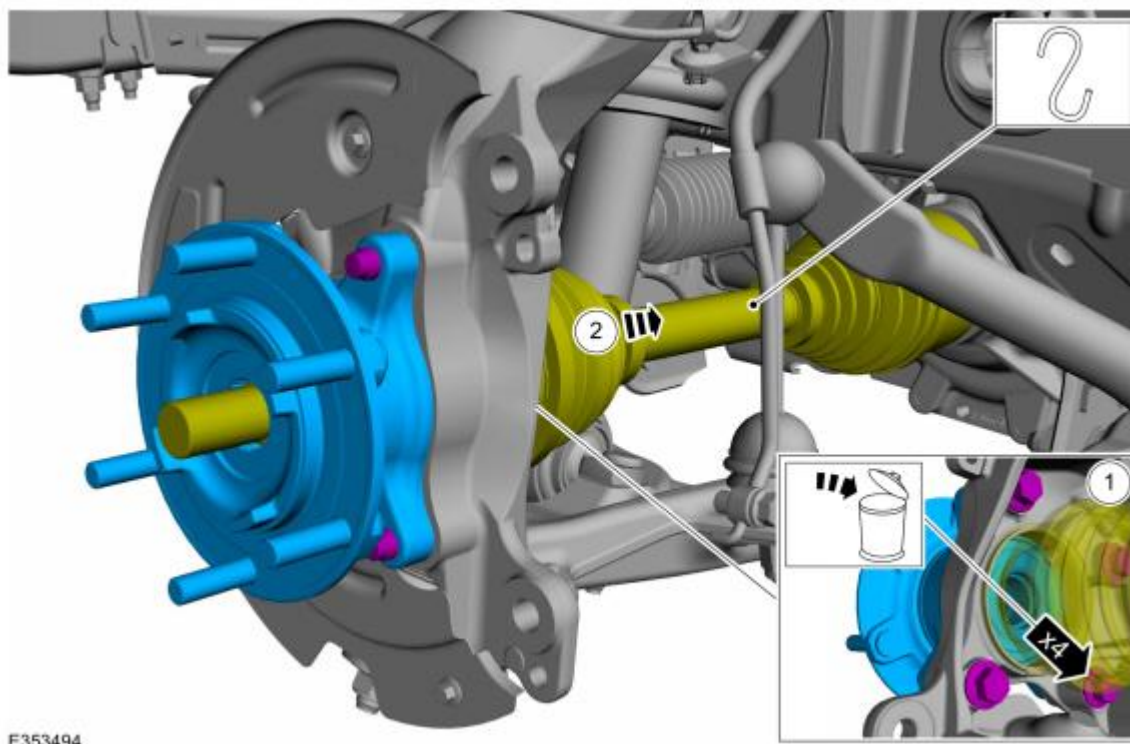


Remove and discard the front wheel bearing and wheel hub bolts.

**Ford Factory Shop Manual purchase options** [www.motorcraftservice.com](http://www.motorcraftservice.com)

NO PART OF THIS DOCUMENT MAY BE REPRODUCED WITHOUT PRIOR AGREEMENT AND WRITTEN PERMISSION OF  
FORD PERFORMANCE PARTS © Ford Motor Company 2020


Using a general equipment puller, press the halfshaft and remove the front wheel bearing and wheel hub.  
Use the General Equipment: Puller



NO PART OF THIS DOCUMENT MAY BE REPRODUCED WITHOUT PRIOR AGREEMENT AND WRITTEN PERMISSION OF  
 FORD PERFORMANCE PARTS © Ford Motor Company 2020

## Wheel Knuckle Removal

### Special Tool(s) / General Equipment

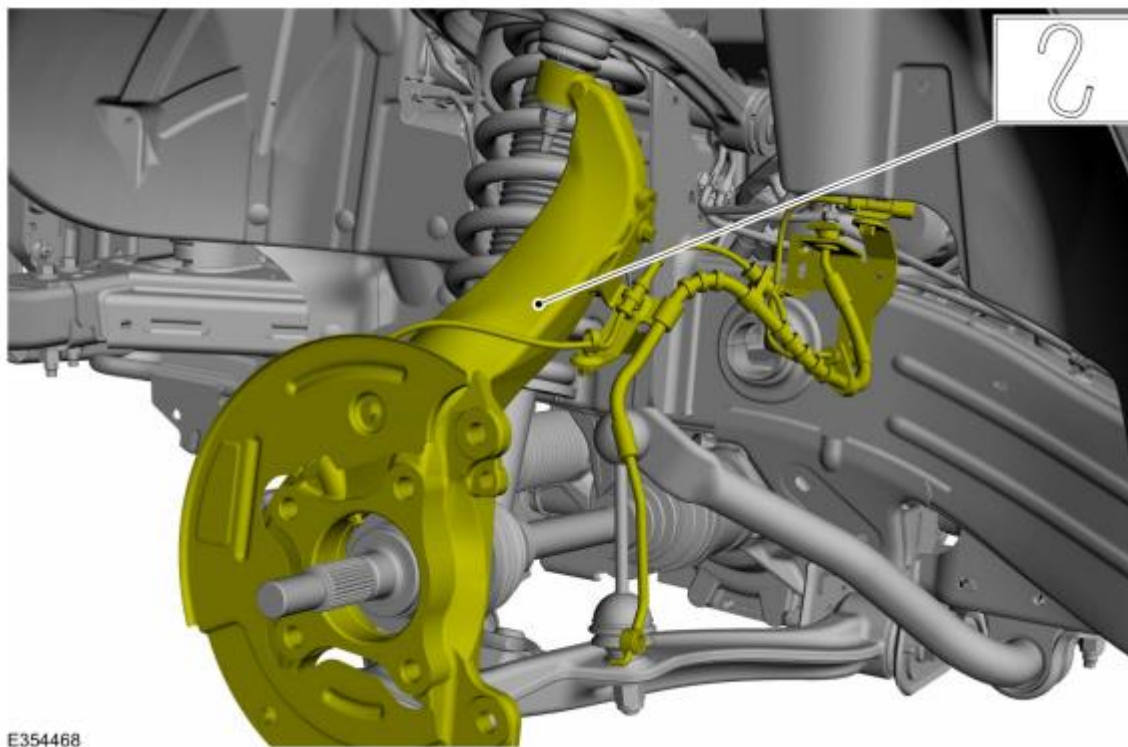
	<p>204-592            Separator, Lower Arm Ball Joint            TKIT-2006C-FFMFLM            TKIT-2006C-LM            TKIT-2006C-ROW</p>
Tie Rod End Remover	

### Removal

**NOTICE:** Never allow the knuckle to hang from the upper and lower control arms or damage to the ball joints can occur.

**NOTE:** Take care not to damage coating on suspension components.

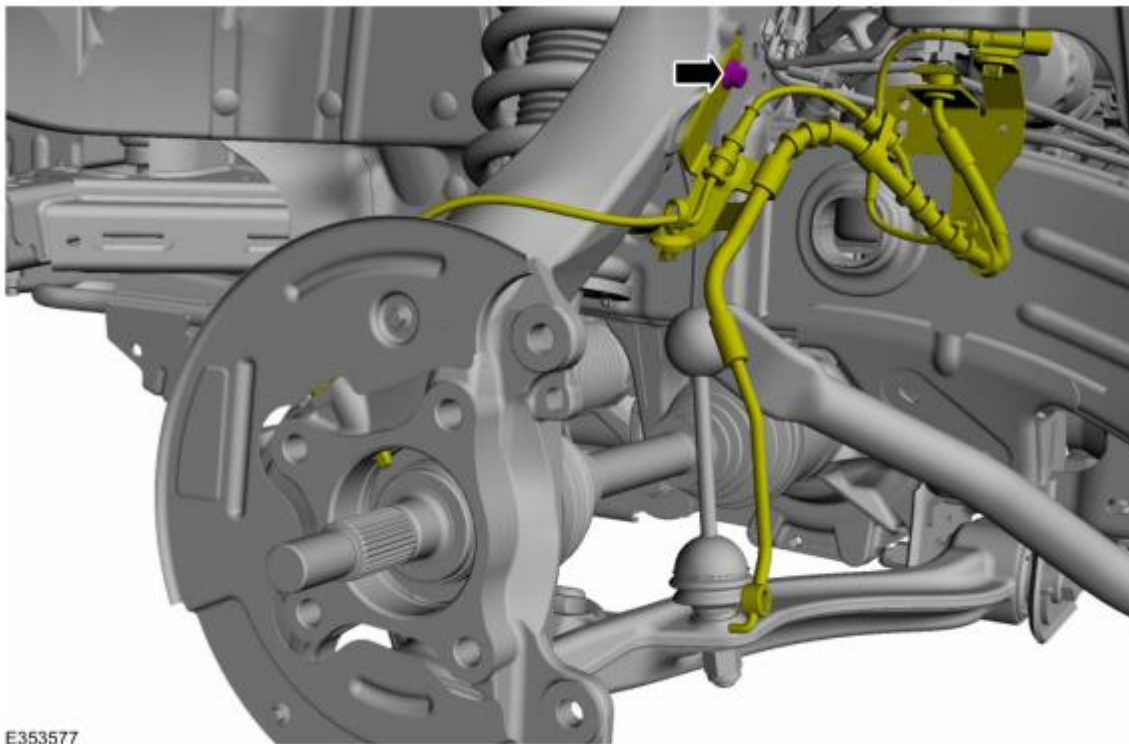
Support the wheel knuckle assembly using mechanic's wire.



Ford Factory Shop Manual purchase options [www.motorcraftservice.com](http://www.motorcraftservice.com)

NO PART OF THIS DOCUMENT MAY BE REPRODUCED WITHOUT PRIOR AGREEMENT AND WRITTEN PERMISSION OF  
FORD PERFORMANCE PARTS © Ford Motor Company 2020

Remove the brake hose bracket bolt and position the brake hose aside.



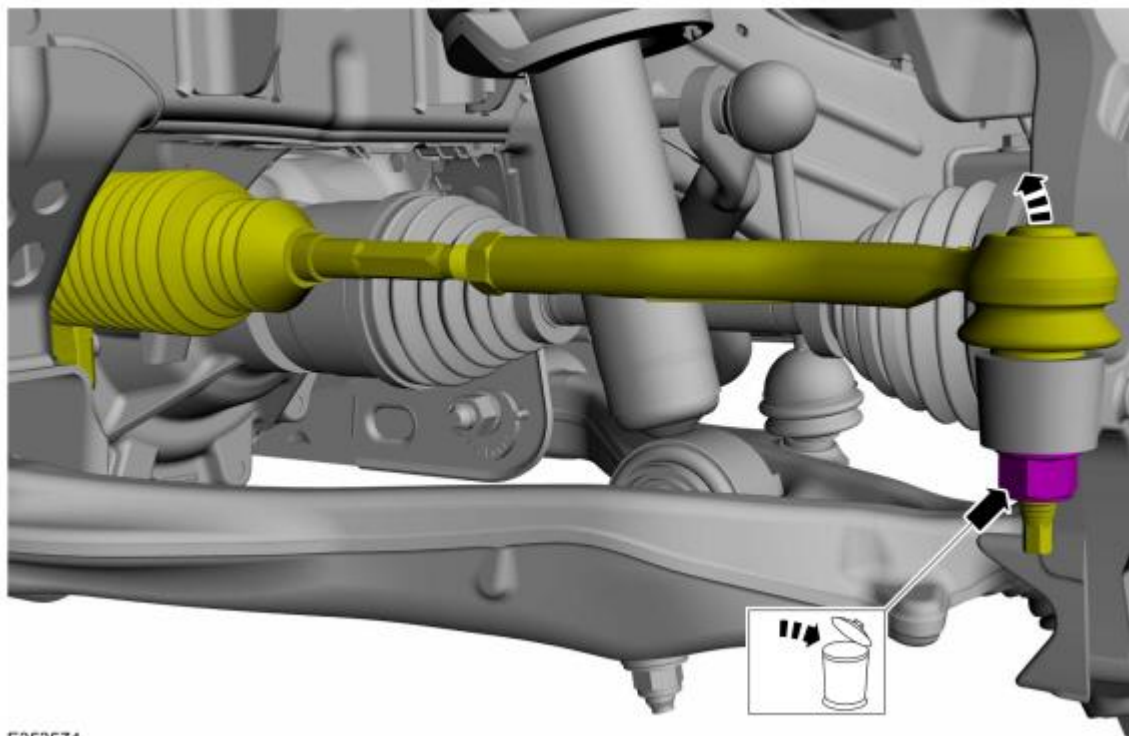
**NOTICE:** Do not use a hammer to separate the outer tie-rod end from the wheel knuckle or damage to the wheel knuckle may result.

**NOTICE:** Use care when installing the tie rod separator or damage to the outer tie-rod end boot may occur.

**NOTE:** Use the hex-holding feature to prevent the stud from turning while removing the nut.

NO PART OF THIS DOCUMENT MAY BE REPRODUCED WITHOUT PRIOR AGREEMENT AND WRITTEN PERMISSION OF  
FORD PERFORMANCE PARTS © Ford Motor Company 2020

Remove and discard the tie rod end nut and separate the tie rod end from the wheel knuckle.  
Use the General Equipment: Tie Rod End Remover

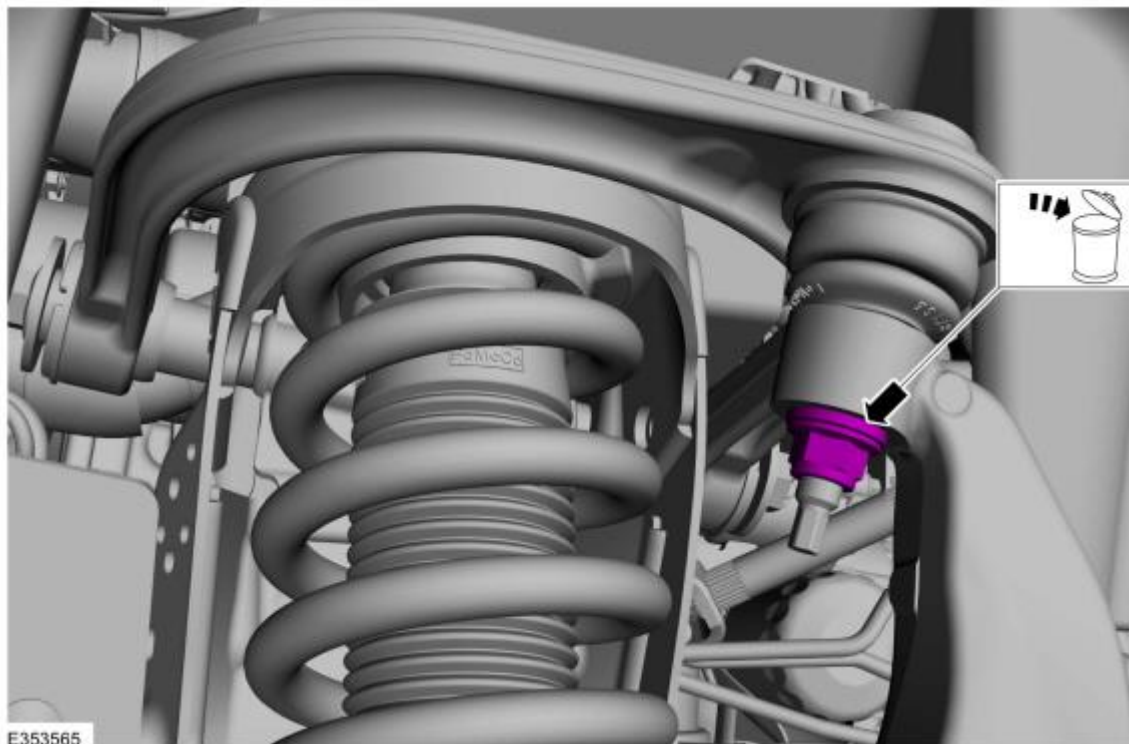




NO PART OF THIS DOCUMENT MAY BE REPRODUCED WITHOUT PRIOR AGREEMENT AND WRITTEN PERMISSION OF  
FORD PERFORMANCE PARTS © Ford Motor Company 2020

**NOTE:** Use the hex-holding feature to prevent the stud from turning while removing the nut.

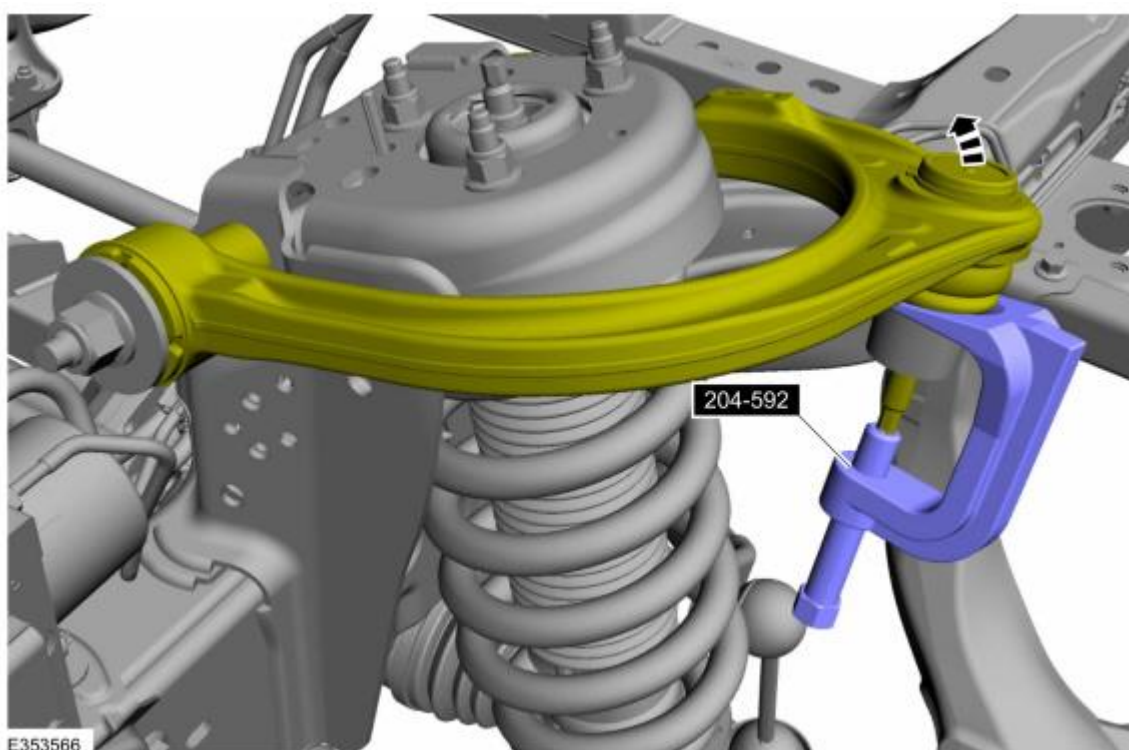
Remove and discard the upper ball joint nut.



NO PART OF THIS DOCUMENT MAY BE REPRODUCED WITHOUT PRIOR AGREEMENT AND WRITTEN PERMISSION OF  
FORD PERFORMANCE PARTS © Ford Motor Company 2020

**NOTE:** *Be sure not to damage the ball joint boot when installing the Ball Joint Separator.*

Separate the upper ball joint from the wheel knuckle.  
Use Special Service Tool: 204-592 Separator, Lower Arm Ball Joint.

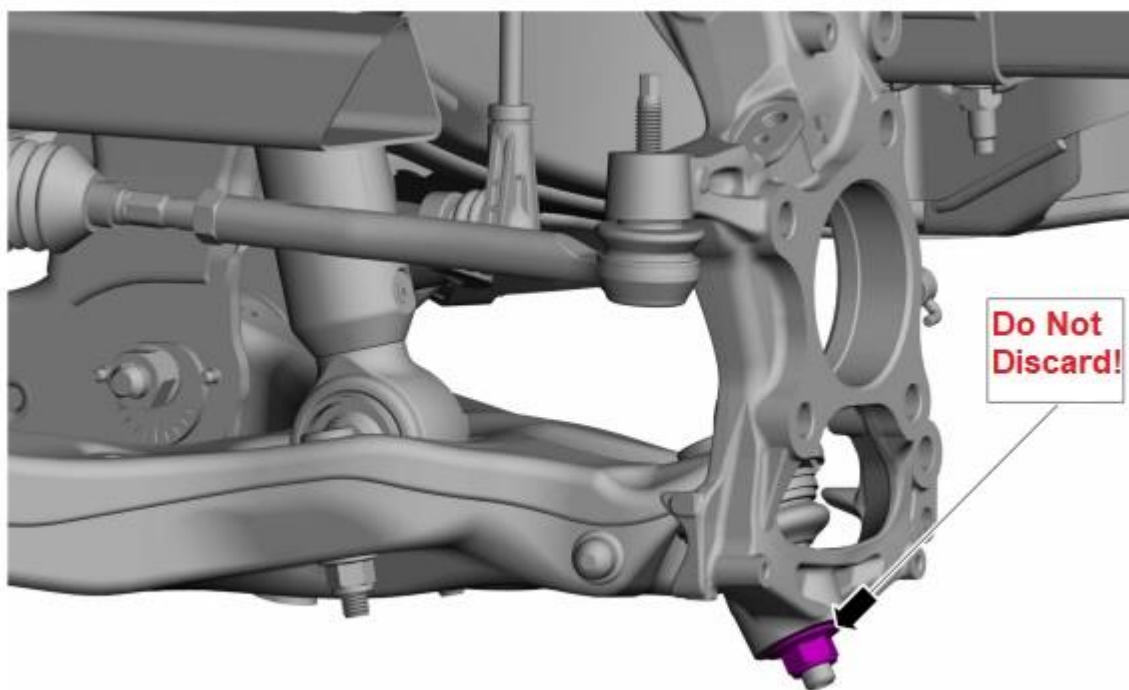


NO PART OF THIS DOCUMENT MAY BE REPRODUCED WITHOUT PRIOR AGREEMENT AND WRITTEN PERMISSION OF  
FORD PERFORMANCE PARTS © Ford Motor Company 2020

**NOTICE:** Never allow the knuckle to hang from the upper and lower control arms or damage to the ball joints can occur.

**NOTE:** Use the hex-holding feature to prevent the stud from turning while removing the nut.

**NOTE:** Do not discard the lower ball joint nut. It will be Re-Used.



E346714

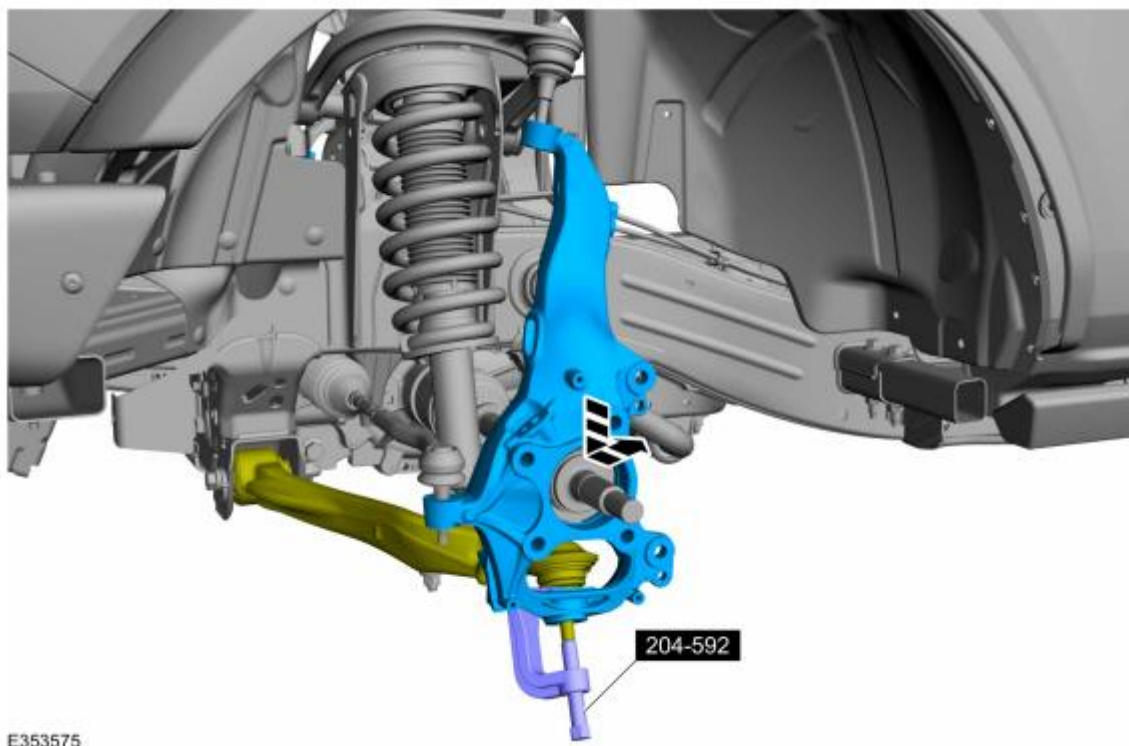
NO PART OF THIS DOCUMENT MAY BE REPRODUCED WITHOUT PRIOR AGREEMENT AND WRITTEN PERMISSION OF  
FORD PERFORMANCE PARTS © Ford Motor Company 2020

**NOTICE:** Do not use a prying device or separator fork between the ball joint and the wheel knuckle. Damage to the ball joint or ball joint seal may result.

**NOTICE:** Use care when releasing the lower arm and wheel knuckle into the resting position or damage to the ball joint seal may occur.

**NOTICE:** Do not damage the ball joint boot while installing the special tool.

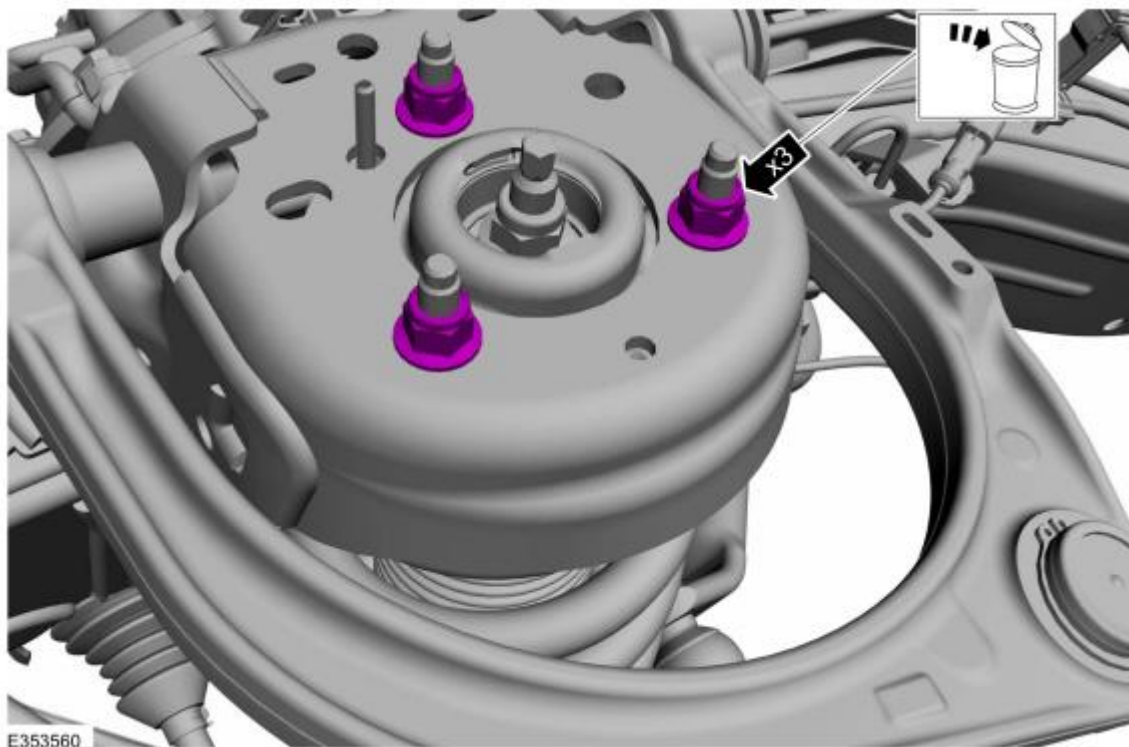
Separate the wheel knuckle from the lower ball joint and remove the wheel knuckle.  
Use Special Service Tool: 204-592 Separator, Lower Arm Ball Joint.



NO PART OF THIS DOCUMENT MAY BE REPRODUCED WITHOUT PRIOR AGREEMENT AND WRITTEN PERMISSION OF  
FORD PERFORMANCE PARTS © Ford Motor Company 2020

**NOTE:** *Note the position of the components before removal.*

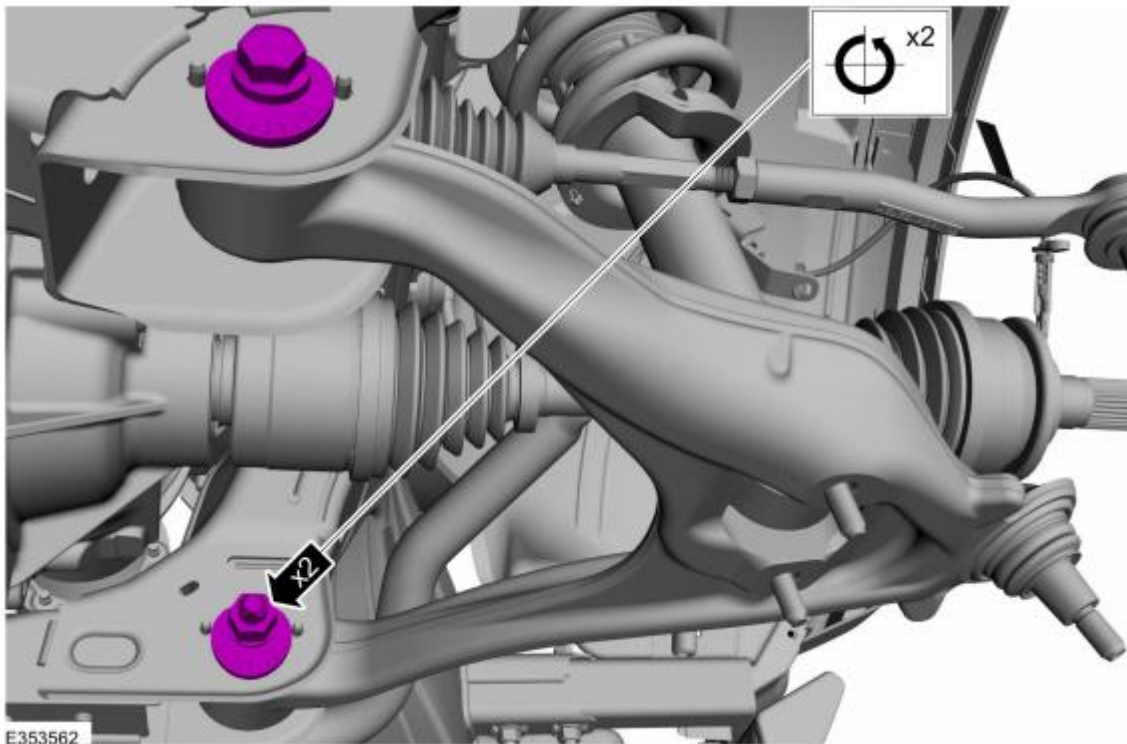
Remove and discard the shock absorber and spring assembly upper nuts.





NO PART OF THIS DOCUMENT MAY BE REPRODUCED WITHOUT PRIOR AGREEMENT AND WRITTEN PERMISSION OF  
FORD PERFORMANCE PARTS © Ford Motor Company 2020

Loosen the lower control arm mounting bolts.

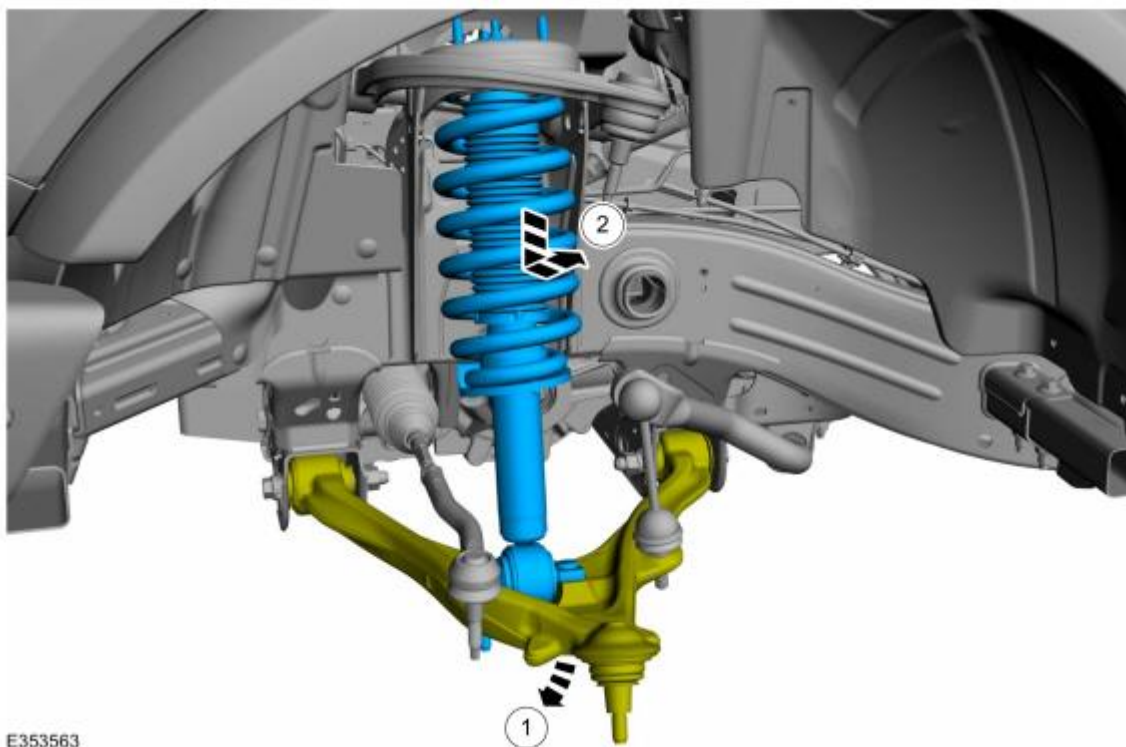




NO PART OF THIS DOCUMENT MAY BE REPRODUCED WITHOUT PRIOR AGREEMENT AND WRITTEN PERMISSION OF  
FORD PERFORMANCE PARTS © Ford Motor Company 2020

Position the lower arm down to gain clearance for removing the shock absorber and spring assembly.

Remove the shock absorber and spring assembly.



NO PART OF THIS DOCUMENT MAY BE REPRODUCED WITHOUT PRIOR AGREEMENT AND WRITTEN PERMISSION OF  
FORD PERFORMANCE PARTS © Ford Motor Company 2020

## Rear Shock Absorber and Spring Assembly Removal

### Special Tool(s) / General Equipment

Vehicle/Axle Stands

### Removal

**NOTICE:** Suspension fasteners are critical parts that affect the performance of vital components and systems. Failure of these fasteners may result in major service expense. Use the same or equivalent parts if replacement is necessary. Do not use a replacement part of lesser quality or substitute design. Tighten fasteners as specified.

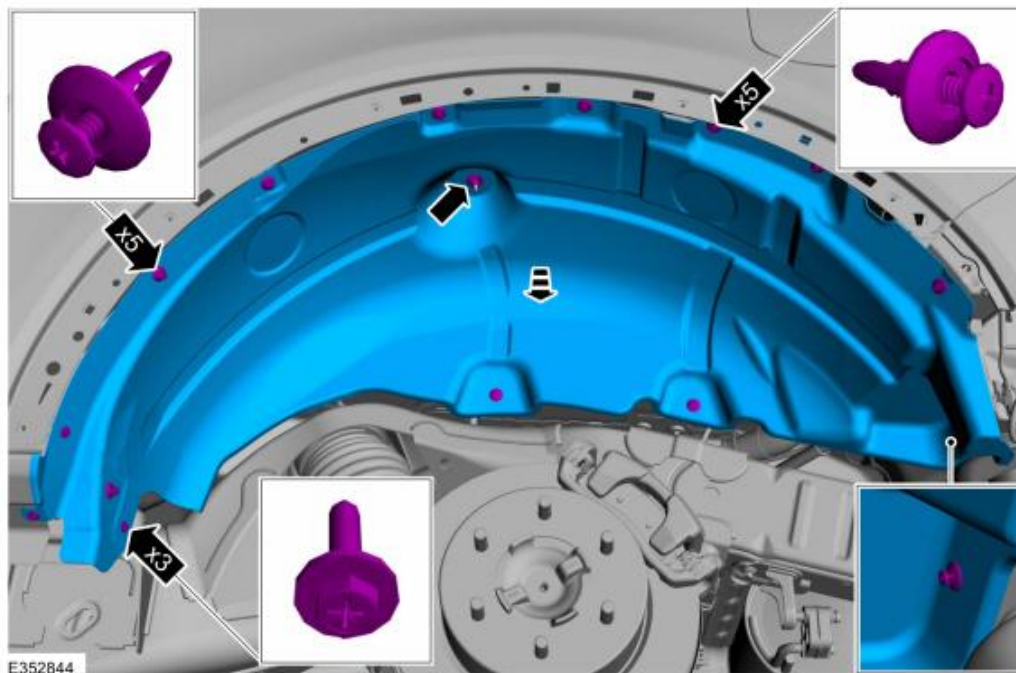
**NOTE:** Removal steps in this procedure may contain installation details.

**NOTE:** LH side shown, RH side similar.

Remove the wheel and tire.  
Refer to: Wheel and Tire Removal and Installation

Remove the rear quarter panel moulding.

Detach the retainers and remove the splash shield.  
Torque: 18 lb.in (2 Nm)



Ford Factory Shop Manual purchase options [www.motorcraftservice.com](http://www.motorcraftservice.com)

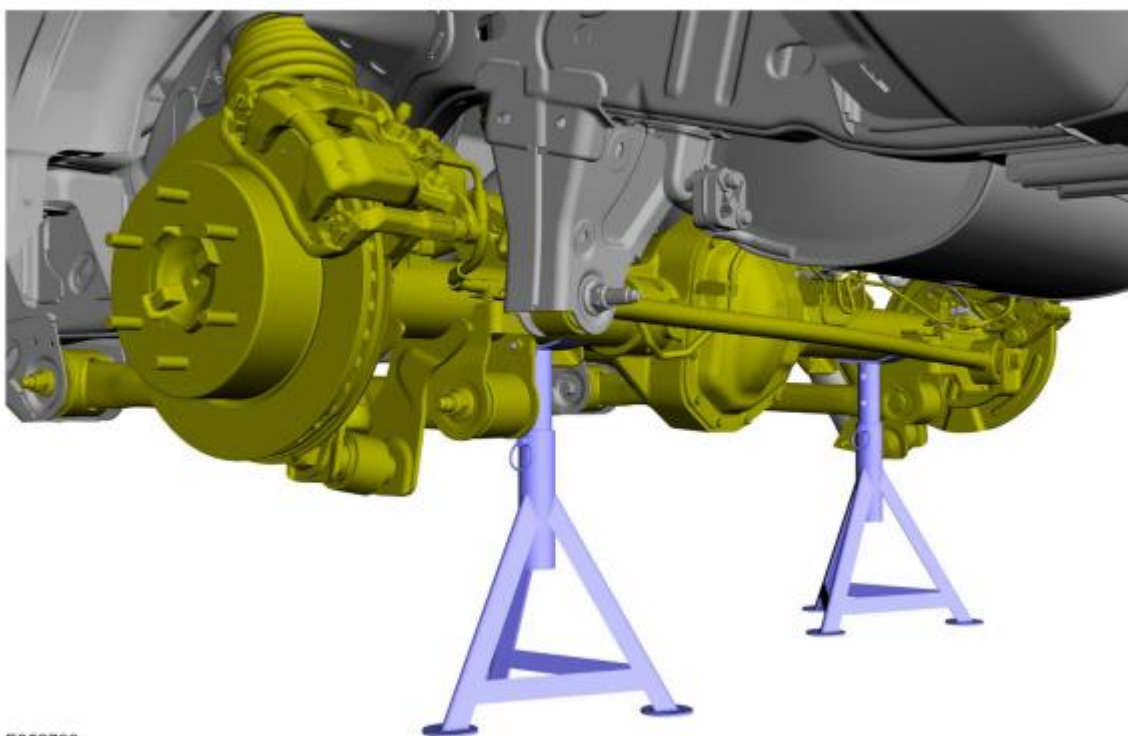
NO PART OF THIS DOCUMENT MAY BE REPRODUCED WITHOUT PRIOR AGREEMENT AND WRITTEN PERMISSION OF  
FORD PERFORMANCE PARTS © Ford Motor Company 2020

**NOTICE:** Do not position the jack on the front control arm or rear control arm on any vehicle. Damage to control arms may occur.

**NOTICE:** Make sure that the jack insulator pads are correctly positioned to prevent direct contact with other components.

With the vehicle on hoist, place axle stands under the rear axle such that the axle stand insulator pads are in contact with the axle.

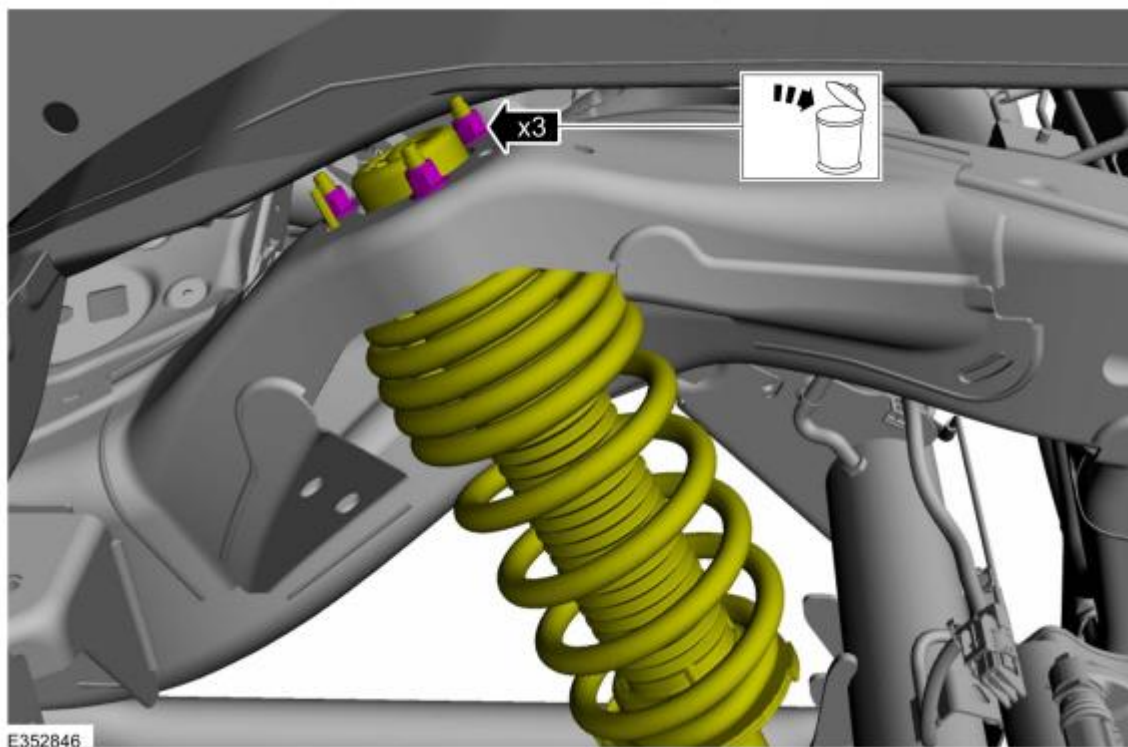
Use the General Equipment: Vehicle/Axle Stands



E352733

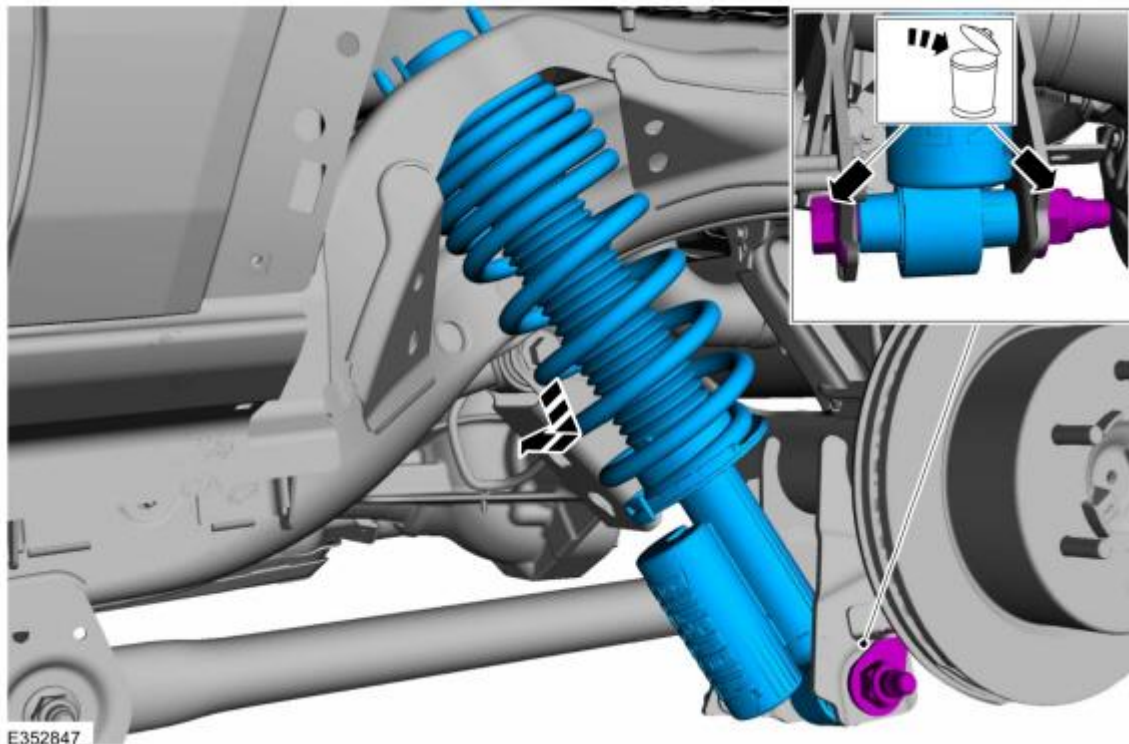
NO PART OF THIS DOCUMENT MAY BE REPRODUCED WITHOUT PRIOR AGREEMENT AND WRITTEN PERMISSION OF  
FORD PERFORMANCE PARTS © Ford Motor Company 2020

Remove and discard the rear shock absorber upper nuts.



NO PART OF THIS DOCUMENT MAY BE REPRODUCED WITHOUT PRIOR AGREEMENT AND WRITTEN PERMISSION OF  
FORD PERFORMANCE PARTS © Ford Motor Company 2020

Remove and discard the rear shock absorber lower nut and bolt and remove the shock absorber.





NO PART OF THIS DOCUMENT MAY BE REPRODUCED WITHOUT PRIOR AGREEMENT AND WRITTEN PERMISSION OF  
FORD PERFORMANCE PARTS © Ford Motor Company 2020

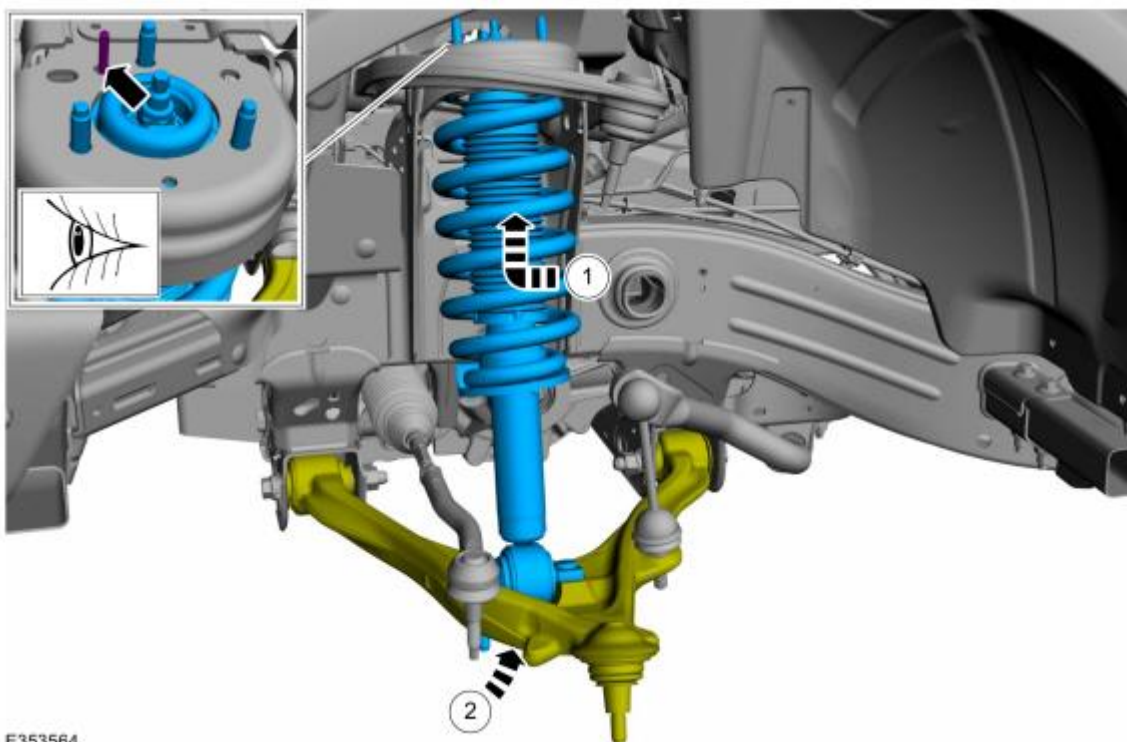
### Front Shock Absorber and Spring Assembly Installation

**NOTICE:** Tighten the suspension bushing fasteners with the suspension raised by a jack to curb height or with the weight of the vehicle resting on the wheels and tires. Otherwise, damage to the bushings may occur.

#### All vehicles

Install the shock absorber and spring assembly.

Position the lower arm up.



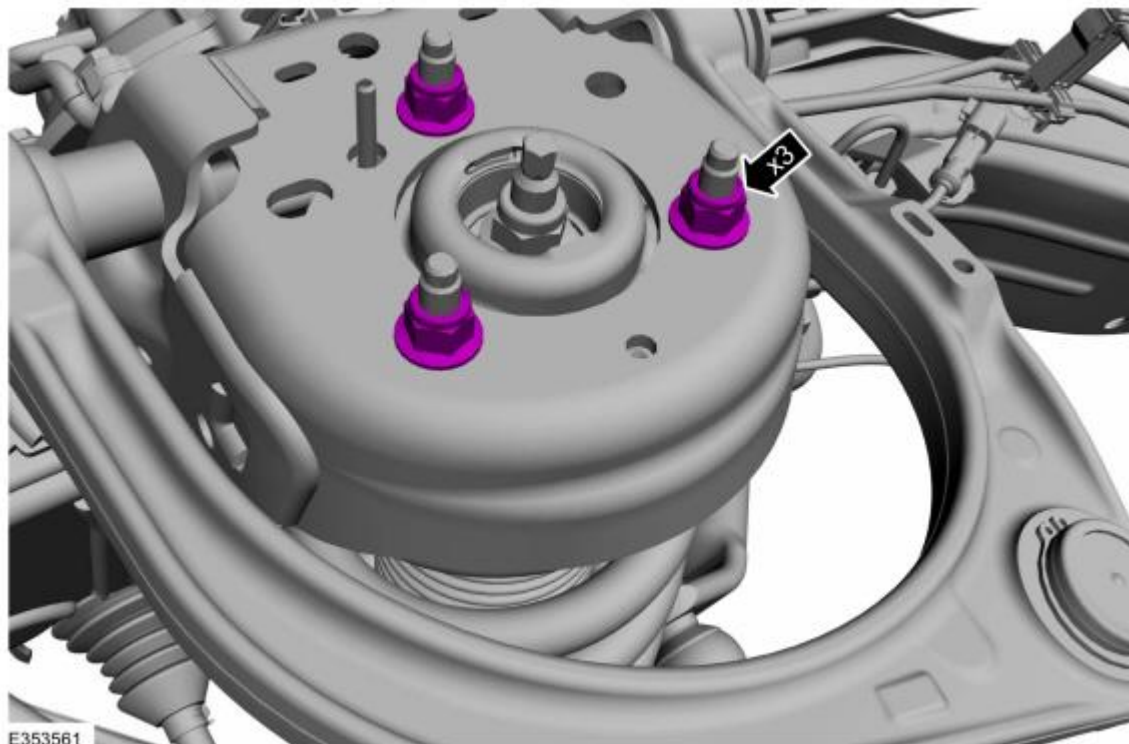
E353564



NO PART OF THIS DOCUMENT MAY BE REPRODUCED WITHOUT PRIOR AGREEMENT AND WRITTEN PERMISSION OF  
FORD PERFORMANCE PARTS © Ford Motor Company 2020

Install the new shock absorber and spring assembly upper nuts.

*Torque: 41 lb.ft (55 Nm)*



NO PART OF THIS DOCUMENT MAY BE REPRODUCED WITHOUT PRIOR AGREEMENT AND WRITTEN PERMISSION OF  
FORD PERFORMANCE PARTS © Ford Motor Company 2020

Install the wheel knuckle.

**NOTICE:** Tighten the suspension bushing fasteners with the suspension raised by a jack to curb height or with the weight of the vehicle resting on the wheels and tires. Otherwise, damage to the bushings may occur.

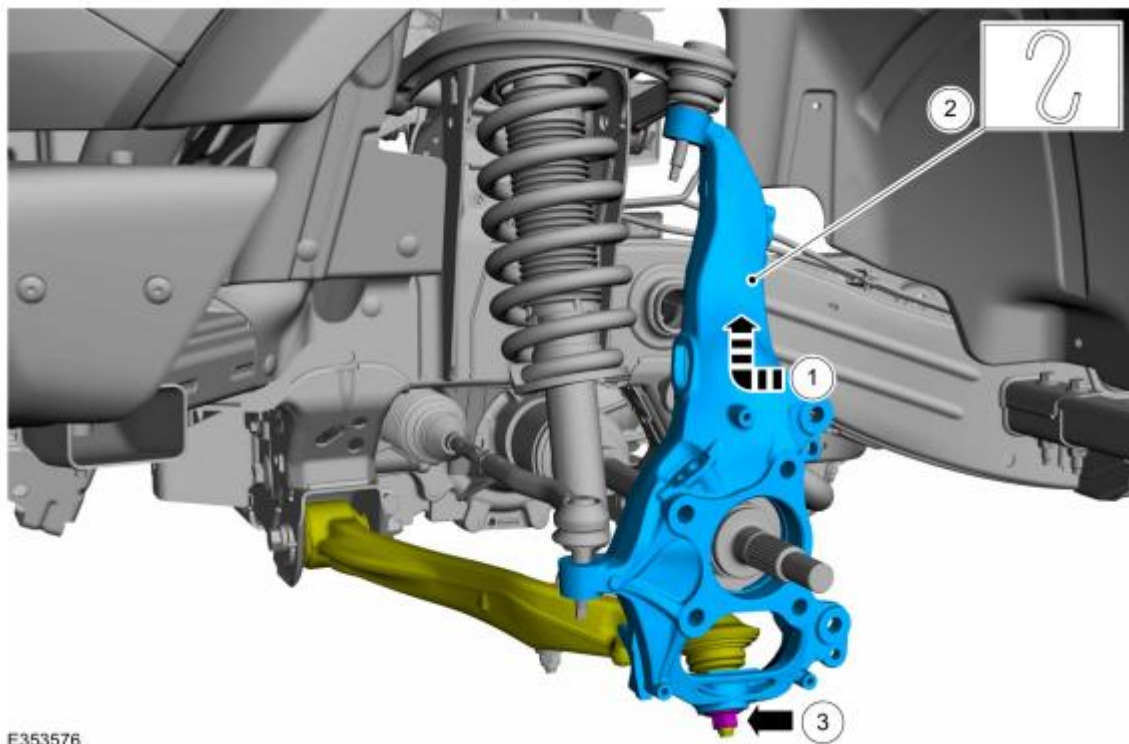
**NOTICE:** Never allow the knuckle to hang from the upper and lower control arms or damage to the ball joints can occur.

Install the wheel knuckle.

Support the wheel knuckle assembly using mechanic's wire.

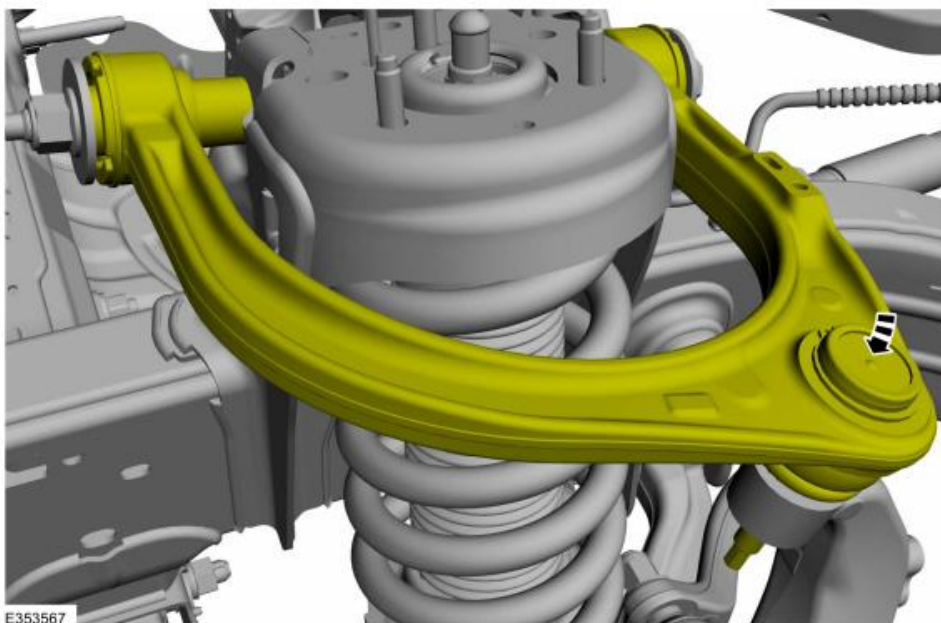
Install the new lower ball joint nut.

*Torque:* 85 lb.ft (115 Nm)

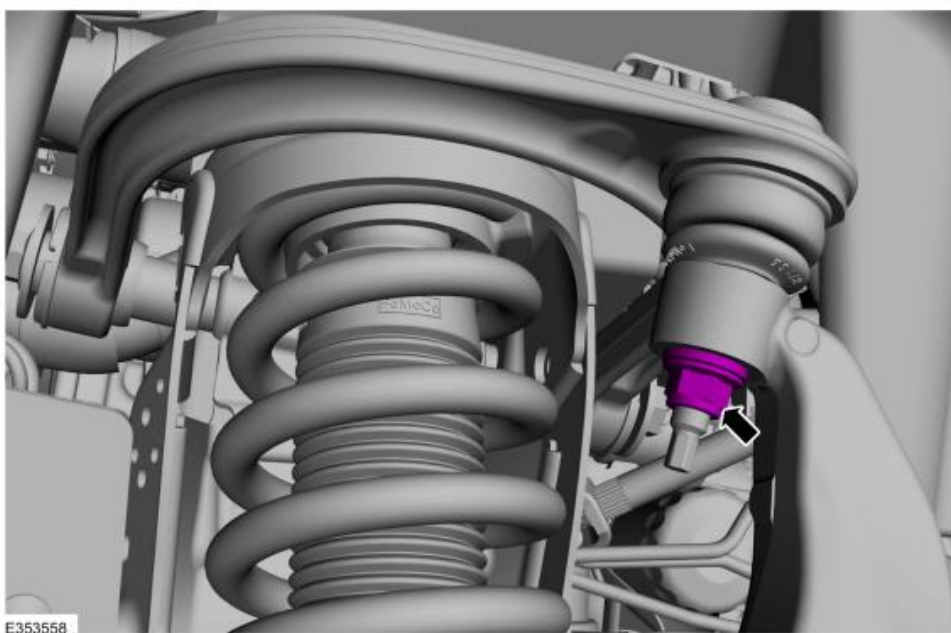


NO PART OF THIS DOCUMENT MAY BE REPRODUCED WITHOUT PRIOR AGREEMENT AND WRITTEN PERMISSION OF  
FORD PERFORMANCE PARTS © Ford Motor Company 2020

Attach the upper ball joint to the wheel knuckle.



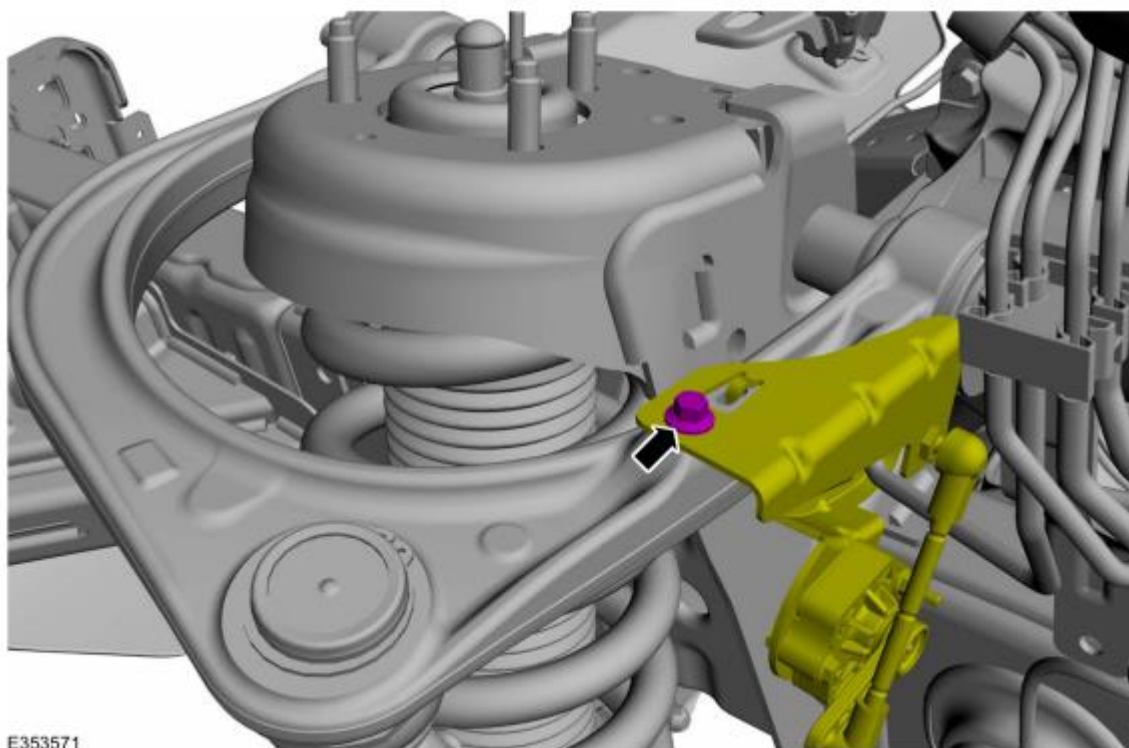
Install the new upper ball joint nut.  
*Torque: 46 lb.ft (63 Nm)*



Ford Factory Shop Manual purchase options [www.motorcraftservice.com](http://www.motorcraftservice.com)

NO PART OF THIS DOCUMENT MAY BE REPRODUCED WITHOUT PRIOR AGREEMENT AND WRITTEN PERMISSION OF  
FORD PERFORMANCE PARTS © Ford Motor Company 2020

If equipped.  
Position the height sensor arm bracket and install the bolt.  
*Torque: 53 lb.in (6 Nm)*

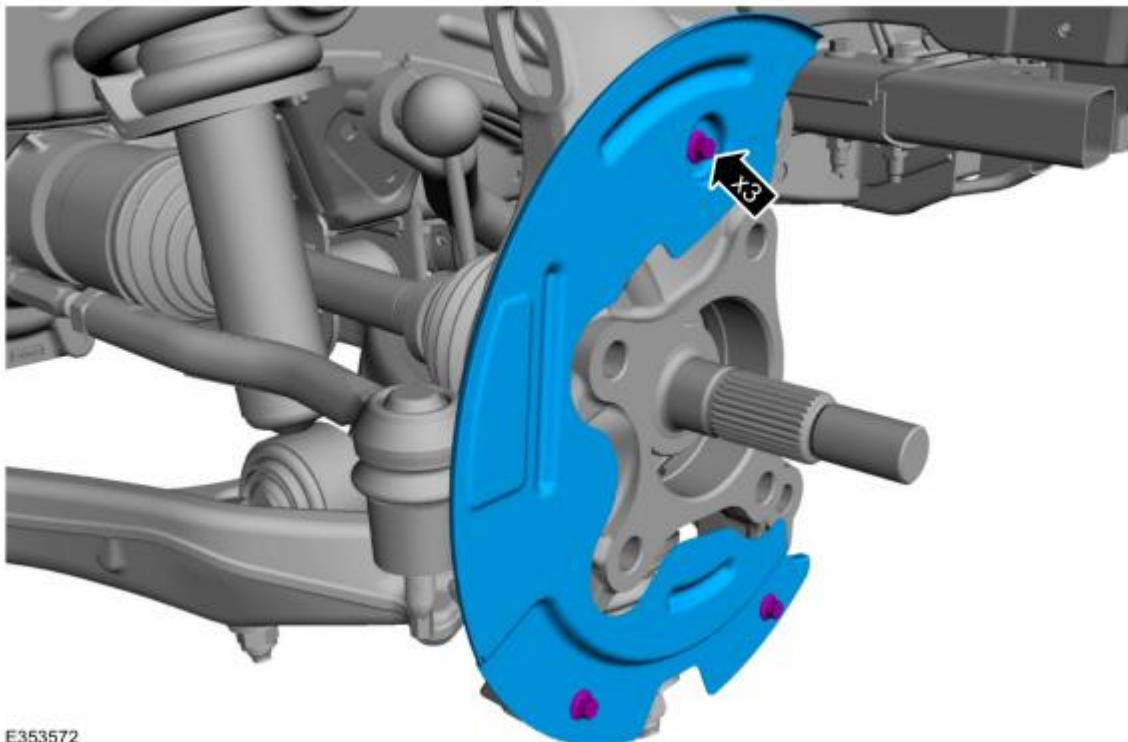


E353571

NO PART OF THIS DOCUMENT MAY BE REPRODUCED WITHOUT PRIOR AGREEMENT AND WRITTEN PERMISSION OF  
FORD PERFORMANCE PARTS © Ford Motor Company 2020

Install the brake disc shield and the brake disc shield bolts.

*Torque:* 80 lb.in (9 Nm)



E353572

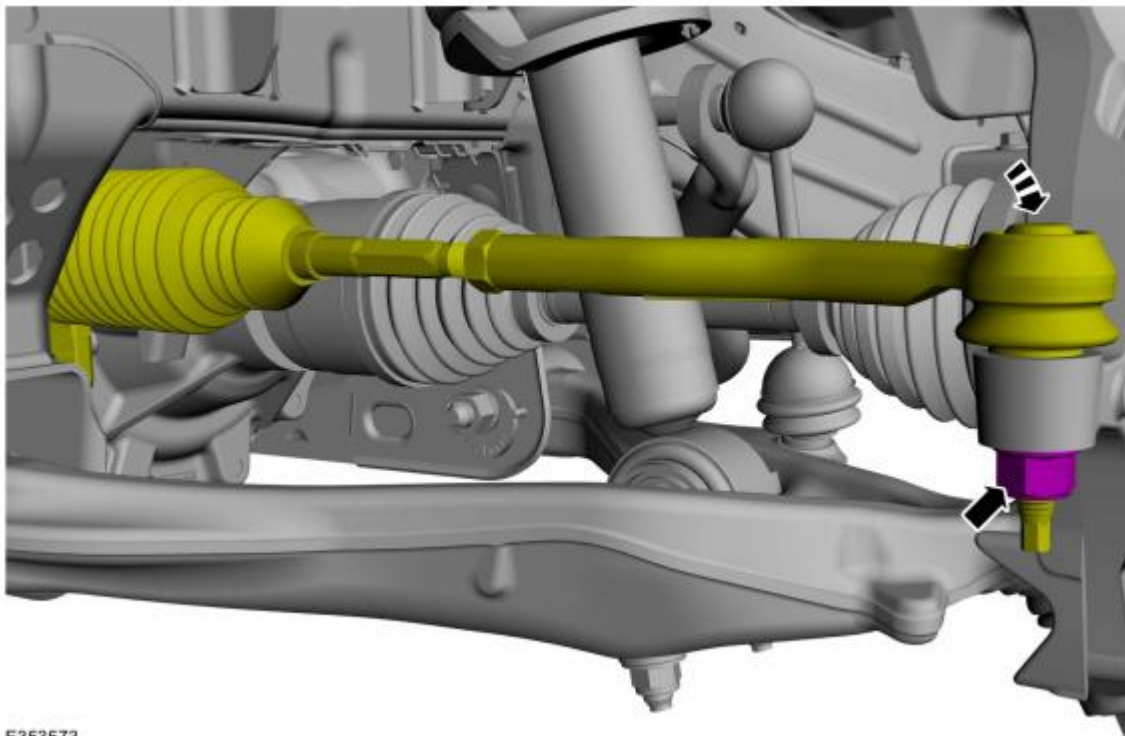


NO PART OF THIS DOCUMENT MAY BE REPRODUCED WITHOUT PRIOR AGREEMENT AND WRITTEN PERMISSION OF  
FORD PERFORMANCE PARTS © Ford Motor Company 2020

**NOTE:** Use the hex-holding feature to prevent the stud from turning while removing the nut.

Position the tie rod end and install the new tie rod end nut.

Torque: 46 lb.ft (63 Nm)



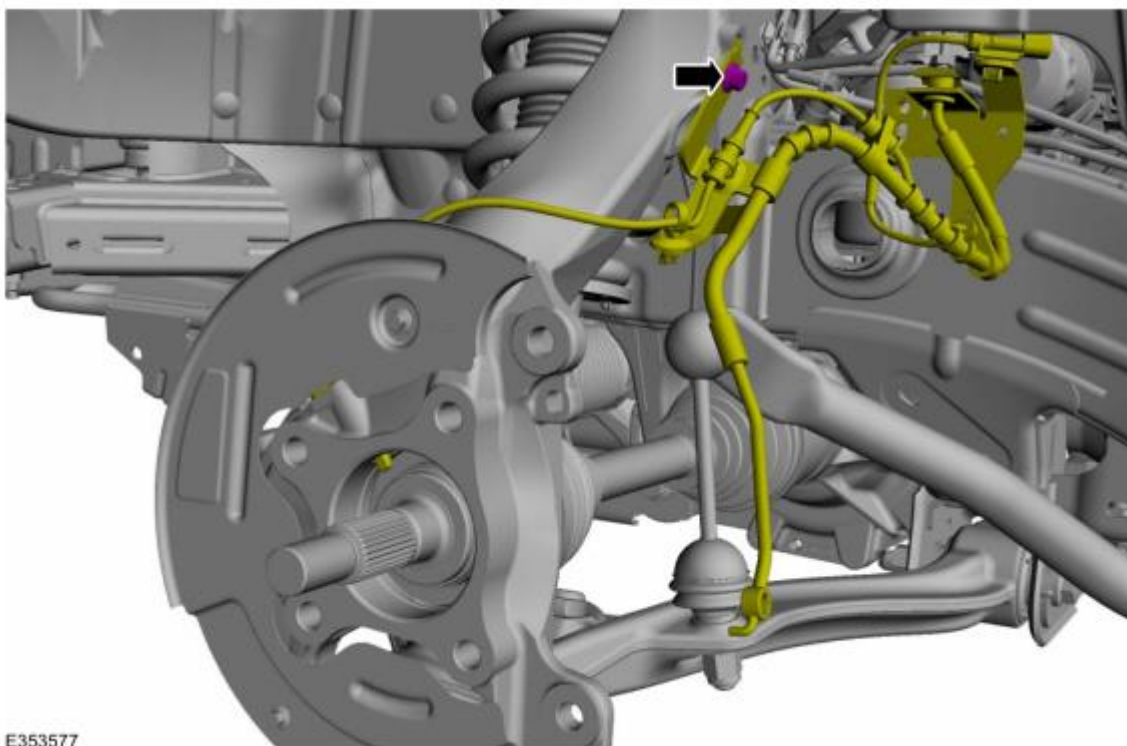
E353573



NO PART OF THIS DOCUMENT MAY BE REPRODUCED WITHOUT PRIOR AGREEMENT AND WRITTEN PERMISSION OF  
FORD PERFORMANCE PARTS © Ford Motor Company 2020

Position the brake hose and install the brake hose bracket bolt.

*Torque: 17 lb.ft (23 Nm)*



E353577

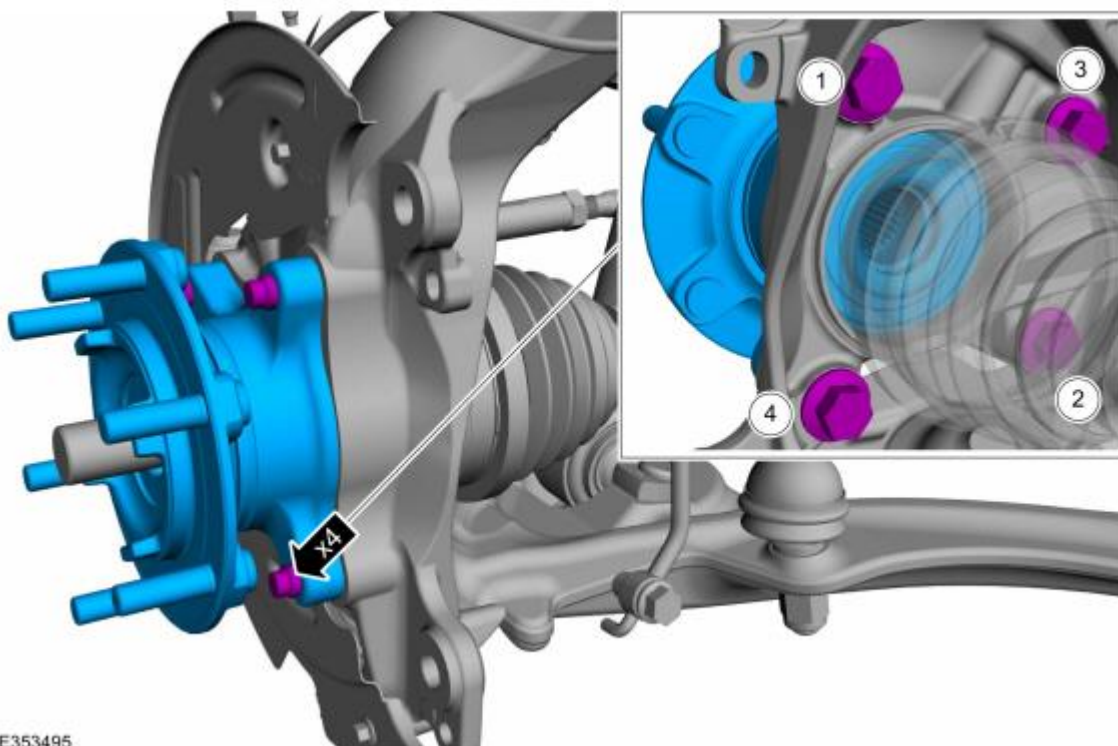
NO PART OF THIS DOCUMENT MAY BE REPRODUCED WITHOUT PRIOR AGREEMENT AND WRITTEN PERMISSION OF  
FORD PERFORMANCE PARTS © Ford Motor Company 2020

Install the front wheel bearing and wheel hub.

**NOTICE:** Install and tighten the new wheel hub nut to specification in a continuous rotation. Always install a new wheel hub nut after loosening or when not tightened to specification in a continuous rotation or damage to the components may occur.

**NOTE:** Tighten the bolts in a cross pattern.

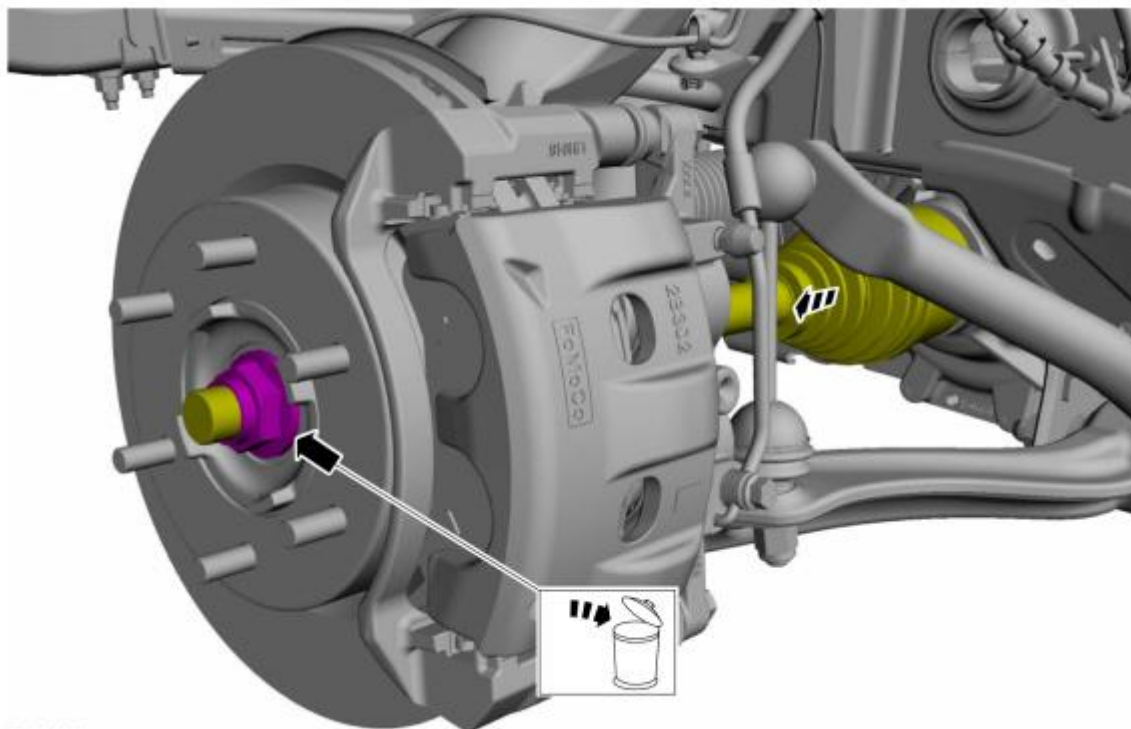
Position the front wheel bearing and wheel hub and install the 4 new front wheel bearing and wheel hub bolts.  
Torque: 129 lb.ft (175 Nm)



NO PART OF THIS DOCUMENT MAY BE REPRODUCED WITHOUT PRIOR AGREEMENT AND WRITTEN PERMISSION OF  
FORD PERFORMANCE PARTS © Ford Motor Company 2020

Install the brake disc.

With old hub nut pull the halfshaft into hub.



E353496

NO PART OF THIS DOCUMENT MAY BE REPRODUCED WITHOUT PRIOR AGREEMENT AND WRITTEN PERMISSION OF  
FORD PERFORMANCE PARTS © Ford Motor Company 2020

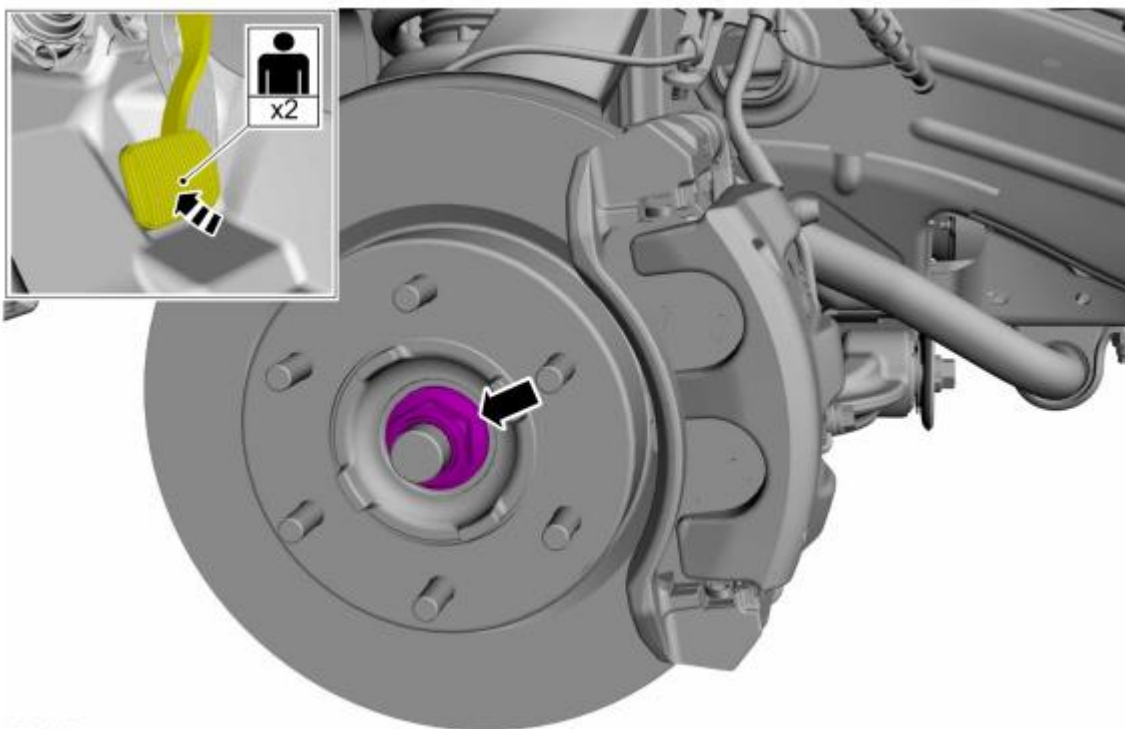
**NOTICE:** Install and tighten the new wheel hub nut to specification in a continuous rotation. Always install a new wheel hub nut after loosening or when not tightened to specification in a continuous rotation or damage to the components may occur.

**NOTE:** *This step requires the aid of another technician.*

**NOTE:** *Apply the brake to keep the halfshaft from rotating.*

While an assistant applies the brake, install the new wheel hub nut.

*Torque: 221 lb.ft (300 Nm)*



E353493

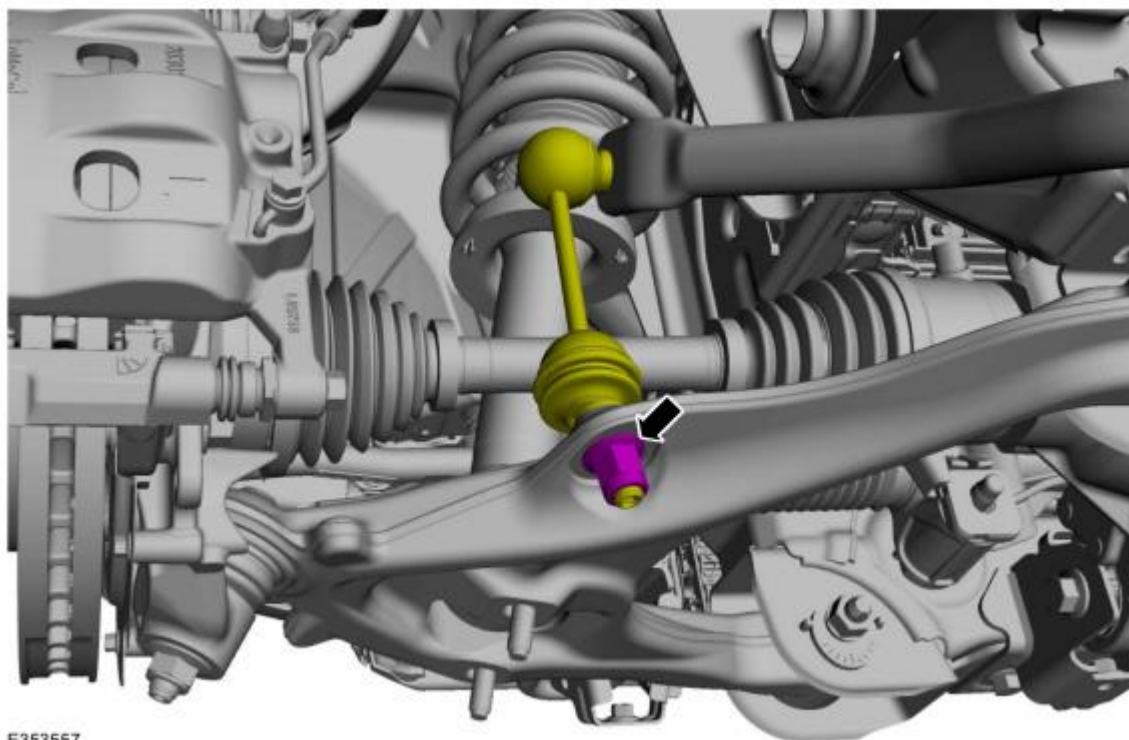
NO PART OF THIS DOCUMENT MAY BE REPRODUCED WITHOUT PRIOR AGREEMENT AND WRITTEN PERMISSION OF  
FORD PERFORMANCE PARTS © Ford Motor Company 2020

**NOTE:** *The stabilizer bar links are designed with low friction ball joints that have a low breakaway torque.*

**NOTE:** *Use the hex-holding feature to prevent the stud from turning while removing the nuts.*

Install the new stabilizer bar link lower nut.

*Torque: 122 lb.ft (165 Nm)*



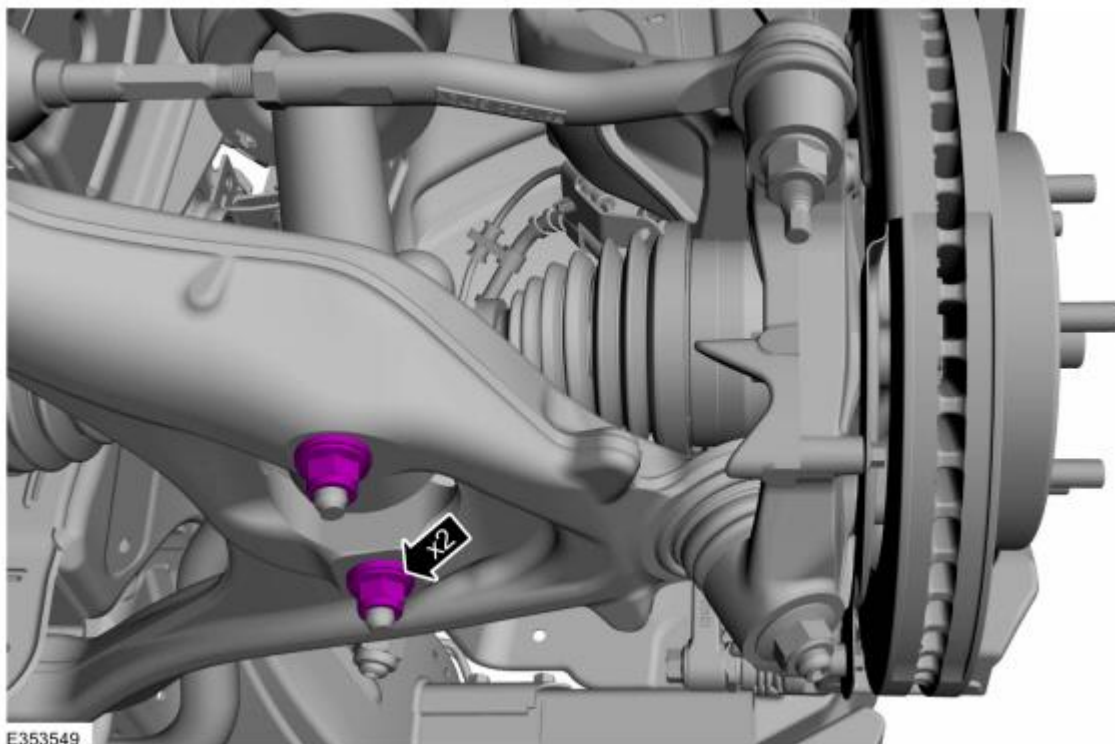
E353557



NO PART OF THIS DOCUMENT MAY BE REPRODUCED WITHOUT PRIOR AGREEMENT AND WRITTEN PERMISSION OF  
FORD PERFORMANCE PARTS © Ford Motor Company 2020

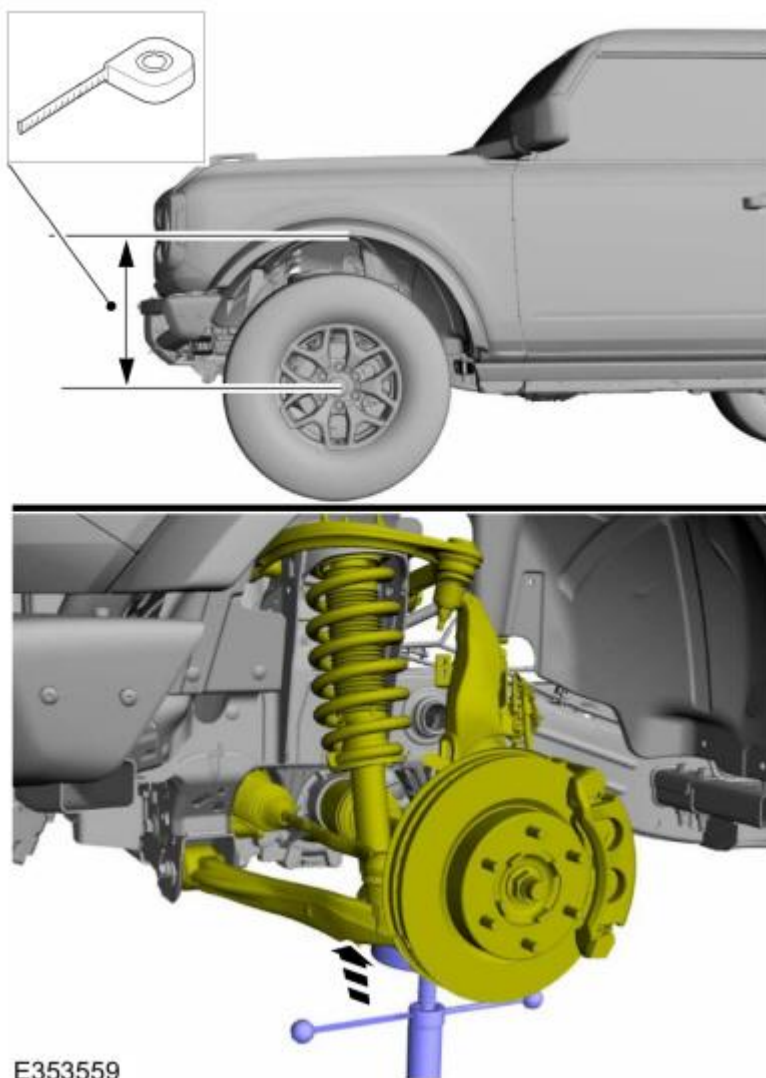
Install the new shock absorber assembly lower nuts.

*Torque: 66 lb.ft (90 Nm)*



NO PART OF THIS DOCUMENT MAY BE REPRODUCED WITHOUT PRIOR AGREEMENT AND WRITTEN PERMISSION OF  
FORD PERFORMANCE PARTS © Ford Motor Company 2020

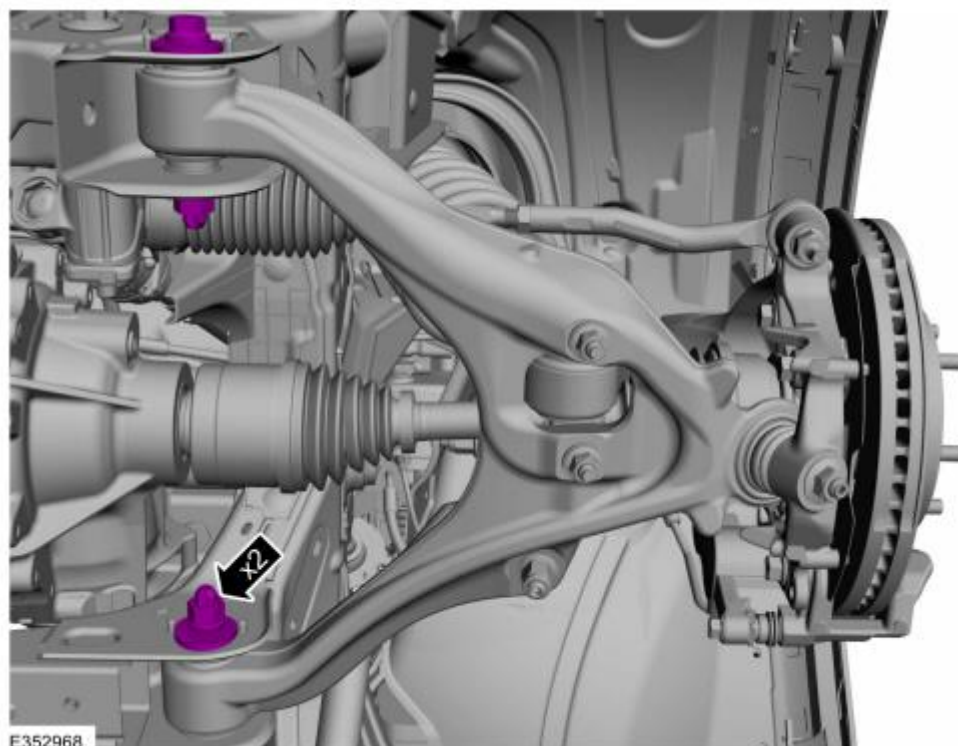
Use a suitable jack to raise the suspension until the distance between the center of the hub and the lip of the fender is equal to the measurement taken during removal (curb height).  
Use the General Equipment: Vehicle/Axle Stands



NO PART OF THIS DOCUMENT MAY BE REPRODUCED WITHOUT PRIOR AGREEMENT AND WRITTEN PERMISSION OF  
FORD PERFORMANCE PARTS © Ford Motor Company 2020

**NOTICE:** Tighten the suspension bushing fasteners with the suspension raised by a jack to curb height or with the weight of the vehicle resting on the wheels and tires. Otherwise, damage to the bushings may occur.

Tighten the lower control arm nuts.  
*Torque: 210 lb.ft (285 Nm)*



Install the wheel and tire.  
Refer to: Wheel and Tire Removal and Installation.

Wheel Camber and Toe adjustment will be necessary.

NO PART OF THIS DOCUMENT MAY BE REPRODUCED WITHOUT PRIOR AGREEMENT AND WRITTEN PERMISSION OF  
FORD PERFORMANCE PARTS © Ford Motor Company 2020

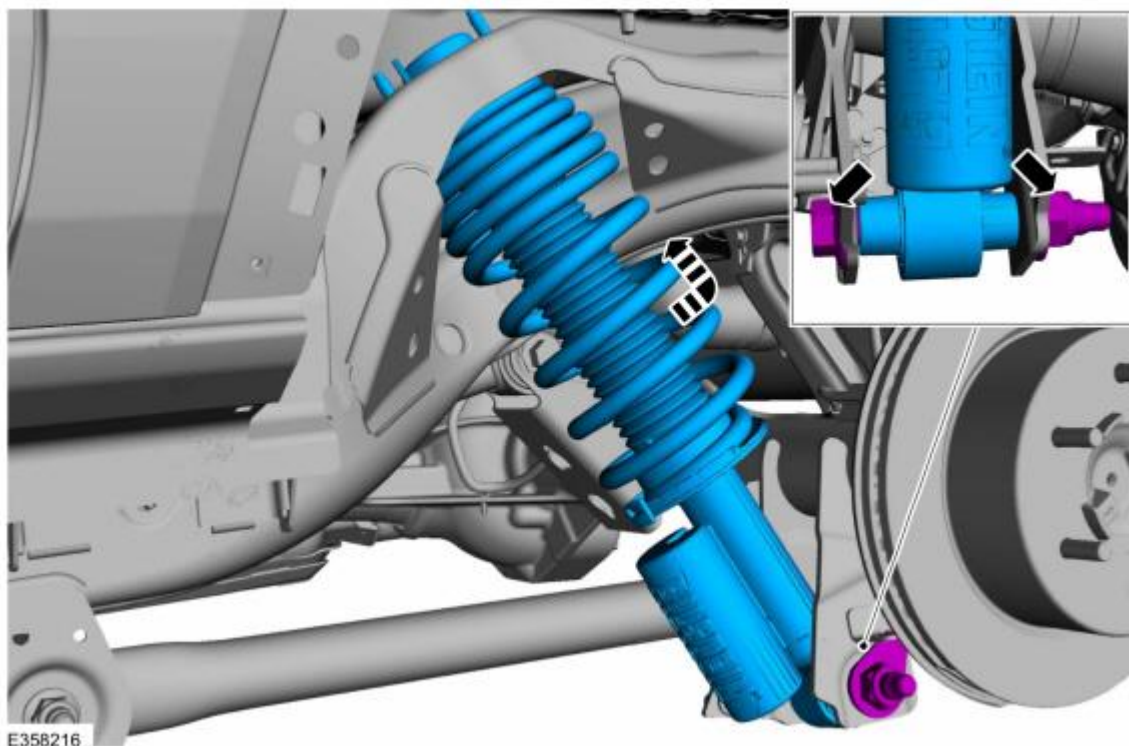
### Rear Shock Absorber and Spring Assembly Installation

**NOTE:** Do not fully tighten the shock absorber mounting bolts. Tighten the suspension bushing fasteners with the suspension loaded or with the weight of the vehicle resting on the wheels and tires, otherwise incorrect clamp load and bushing damage may occur.

**NOTE:** Make sure a new nut and bolt is installed.

Install the new rear shock absorber and shock absorber lower bolt and nut.

Torque: 350 lb.ft (475 Nm)

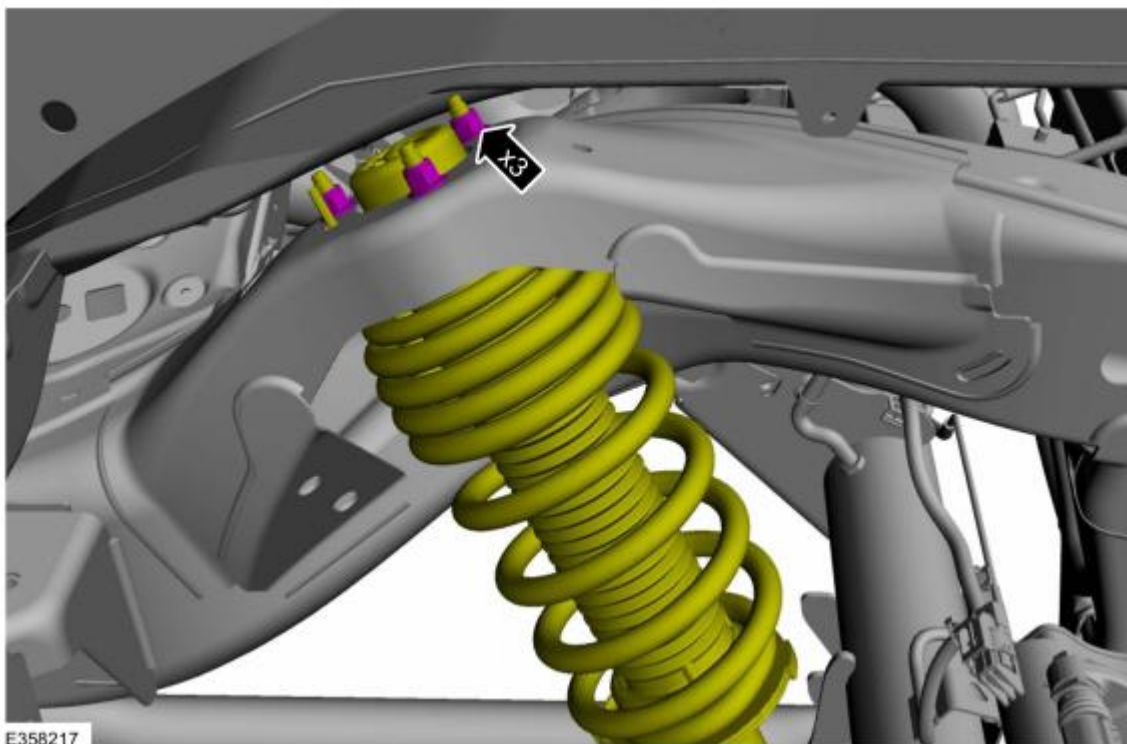


Ford Factory Shop Manual purchase options [www.motorcraftservice.com](http://www.motorcraftservice.com)

NO PART OF THIS DOCUMENT MAY BE REPRODUCED WITHOUT PRIOR AGREEMENT AND WRITTEN PERMISSION OF  
FORD PERFORMANCE PARTS © Ford Motor Company 2020

Install the new rear shock absorber upper nuts.

*Torque: 41 lb.ft (55 Nm)*



To install, reverse the removal procedure.



NO PART OF THIS DOCUMENT MAY BE REPRODUCED WITHOUT PRIOR AGREEMENT AND WRITTEN PERMISSION OF  
FORD PERFORMANCE PARTS © Ford Motor Company 2020

## Wheel and Tire

### Removal

**NOTICE:** Do not use heat to loosen a seized wheel nut.

**NOTICE:** Do not use power tools on locking wheel nuts.

1. With the vehicle in NEUTRAL, position it on a hoist.  
For additional information, refer to: Jacking and Lifting
2. **NOTICE:** Do not use heat to loosen a seized wheel nut or damage to the wheel and wheel bearing can occur.

**NOTICE:** If equipped with full wheel cover with exposed wheel nuts, the wheel nuts must be removed prior to removing the wheel cover or damage to the wheel cover will occur.

**NOTE:** Use metric hexagonal socket.


Remove the wheel nuts.



E351488

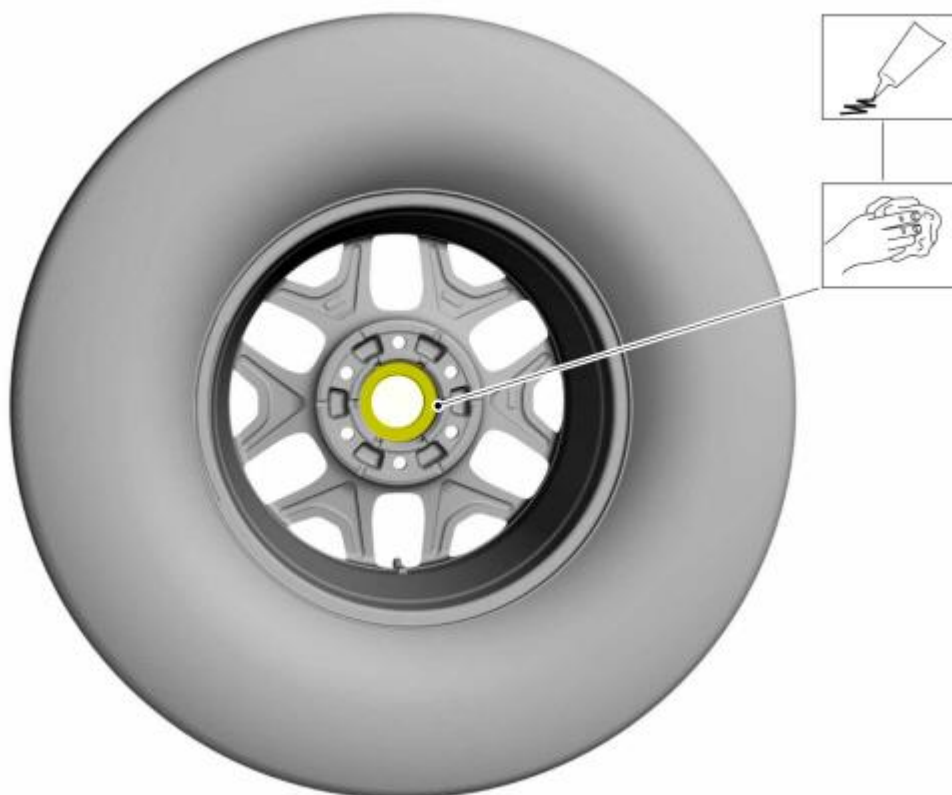
Ford Factory Shop Manual purchase options [www.motorcraftservice.com](http://www.motorcraftservice.com)

NO PART OF THIS DOCUMENT MAY BE REPRODUCED WITHOUT PRIOR AGREEMENT AND WRITTEN PERMISSION OF  
FORD PERFORMANCE PARTS © Ford Motor Company 2020

 **WARNING:** When a wheel is installed, always remove any corrosion, dirt or foreign material present on the mounting surface of the wheel and the mounting surface of the wheel hub, brake drum or brake disc. Make sure that any fasteners that attach the rotor to the hub are secured so they do not interfere with the mounting surfaces of the wheel. Failure to follow these instructions when installing wheels may result in the wheel nuts loosening and the wheel coming off while the vehicle is in motion, which could result in loss of control, leading to serious injury or death to vehicle occupant(s).

**NOTICE:** Make sure to apply a thin coat of anti-seize lubrication only to the interface between the wheel pilot bore and the hub pilot. Do not allow the anti-seize to make contact with the wheel-to-brake disc/drum mounting surface, wheel studs, wheel nuts, brake pads or brake disc friction surfaces or damage to components may occur.

Clean the mounting surfaces. Apply anti-seize lubrication. Anti-Seize Lubricant (-;XL-2)



E351490

NO PART OF THIS DOCUMENT MAY BE REPRODUCED WITHOUT PRIOR AGREEMENT AND WRITTEN PERMISSION OF  
FORD PERFORMANCE PARTS © Ford Motor Company 2020

## Installation

1. **NOTE:** *Only tighten the nuts finger tight at this stage.*

Install the wheel and tire and install the wheel nuts.



E351489

NO PART OF THIS DOCUMENT MAY BE REPRODUCED WITHOUT PRIOR AGREEMENT AND WRITTEN PERMISSION OF  
FORD PERFORMANCE PARTS © Ford Motor Company 2020

2.  **WARNING:** Retighten wheel nuts within 160 km (100 mi) after a wheel is reinstalled. Wheels can loosen after initial tightening. Failure to follow this instruction may result in serious injury to vehicle occupant(s).

**NOTICE:** Failure to tighten the wheel nuts in a star/cross pattern can result in high brake disc runout, which accelerates the development of brake roughness, shudder and vibration.

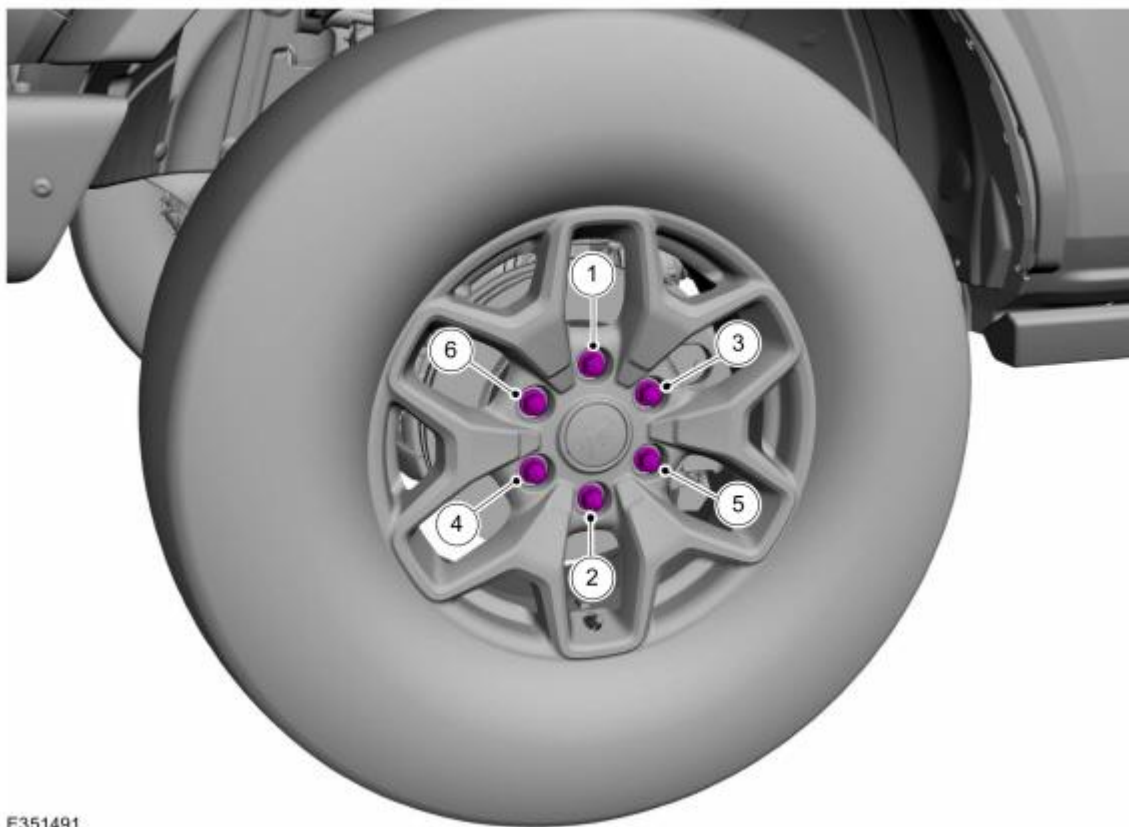
**NOTE:** The wheel nut torque specification is for clean, dry wheel stud and wheel nut threads.

**NOTE:** Use metric hexagonal socket.

**NOTE:** Final tightening to be performed with vehicle resting on tires.

Tighten the wheel nuts.

Torque: 100 lb.ft (135 Nm)



E351491

NO PART OF THIS DOCUMENT MAY BE REPRODUCED WITHOUT PRIOR AGREEMENT AND WRITTEN PERMISSION OF  
FORD PERFORMANCE PARTS © Ford Motor Company 2020

## Headlight Aim Adjustment

### All headlamp types

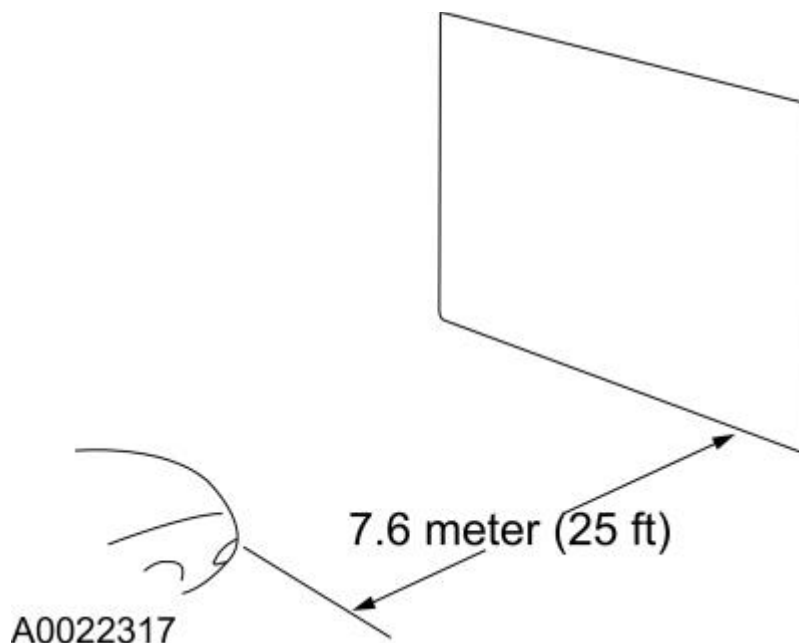
**NOTE:** Refer to the Owner's Literature for the headlamp adjustment screw location.

**NOTE:** Consult your state vehicle inspection manual for recommended tolerance ranges for visual aiming.

**NOTE:** Horizontal aim is not adjustable.

2. Identify the headlamp type. Vehicles are equipped with Visually Optically Aligned Left (VOL) or Visually Optically Aligned Right (VOR) headlamps. Molded in small letters on the headlamp lens is one of the following: VOL and SAE or VOR and SAE.
3. **NOTE:** Before starting headlamp adjustment, entry conditions must be met.
  - Vehicle must be on level ground.
  - Tires must be correctly inflated.
  - Vehicle must be normally loaded.
  - Headlamps must be clean.
  - Headlamps must operate correctly.
  - Air suspension switch must be on (if equipped).
4. **NOTE:** The vertical wall or screen must be a minimum of 2.4 m (8ft) wide.

Park the vehicle on a level surface approximately 7.6 m (25 ft) from the vertical wall or screen directly in front of it.



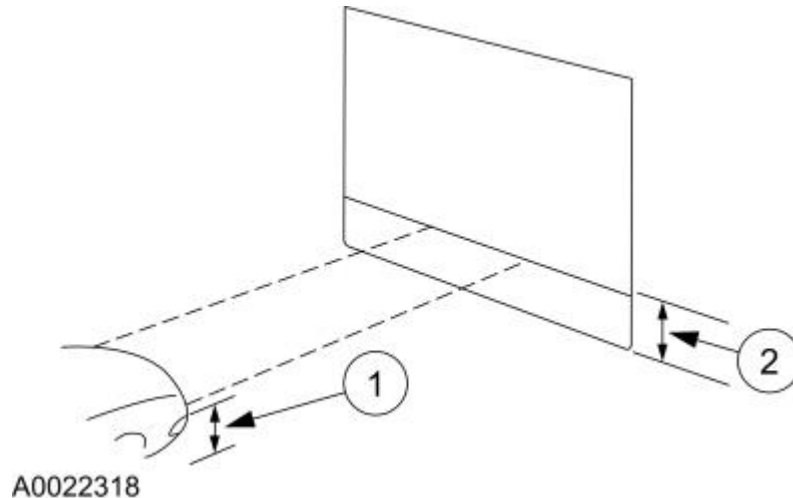
Ford Factory Shop Manual purchase options [www.motorcraftservice.com](http://www.motorcraftservice.com)



NO PART OF THIS DOCUMENT MAY BE REPRODUCED WITHOUT PRIOR AGREEMENT AND WRITTEN PERMISSION OF  
 FORD PERFORMANCE PARTS © Ford Motor Company 2020

**NOTE:** The bulb center of the low beam bulb is sometimes marked on the lens (circle, crosshair or other mark) or is the center of the low beam reflector, bulb shield or the low beam projector inner lens.

Measure the center of the headlamp height to ground and record the measurement.



6. **NOTE:** Use a 2.4 m (8 ft) section of masking tape for the horizontal reference line.
- For vehicles with headlamp bulb center heights below 95 cm (37.5 inches), place the horizontal reference line equal to the headlamp bulb center height.
  - For vehicles with headlamp bulb center heights between 95 cm - 105 cm (37.5 - 41.5 inches), place the horizontal reference line at the headlamp bulb center height minus 1.3 cm (0.5 inch).
  - For vehicles with headlamp bulb center heights above 105 cm (41.5 inches), place the horizontal reference line at the headlamp bulb center height minus 2.5 cm (1.0 inch).

7. **NOTE:** Carry out this procedure in a dark environment to effectively see the headlamp beam pattern.

Turn the low beam headlamps on to illuminate the wall or screen and open the hood.

8. **NOTE:** The cut off of the beam pattern is the horizontal line of the beam pattern where there is MAXIMUM change between light and dark.

On the wall or screen, locate the cut off of the beam pattern.

NO PART OF THIS DOCUMENT MAY BE REPRODUCED WITHOUT PRIOR AGREEMENT AND WRITTEN PERMISSION OF  
FORD PERFORMANCE PARTS © Ford Motor Company 2020

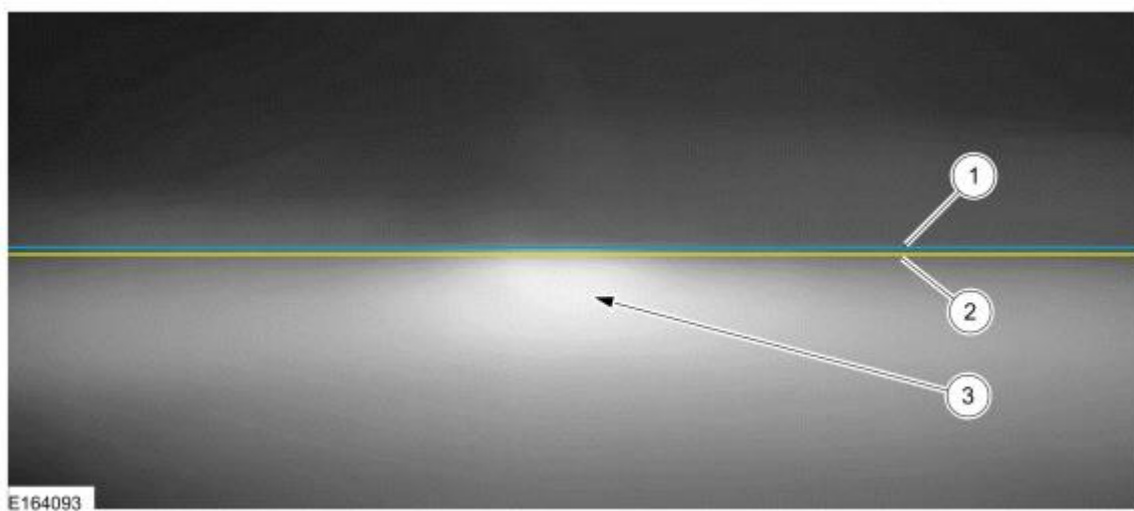
**VOR-type headlamps**

**NOTE:** Procedure applies to both left and right headlamps with VOR molded on lens.

9. **NOTE:** The appearance of the VOR beam pattern may vary between vehicles.

There is a distinct cutoff in the right portion of the beam pattern.

- 1 - Horizontal reference line
- 2 - Cut off
- 3 - High intensity zone



10. **NOTE:** Align one headlamp while covering the other headlamp.

Align the headlamps to the horizontal reference line. Adjust the headlamp as necessary using the headlamp adjusting screw.

11. Repeat the previous step for the remaining headlamp.

NO PART OF THIS DOCUMENT MAY BE REPRODUCED WITHOUT PRIOR AGREEMENT AND WRITTEN PERMISSION OF  
FORD PERFORMANCE PARTS © Ford Motor Company 2020

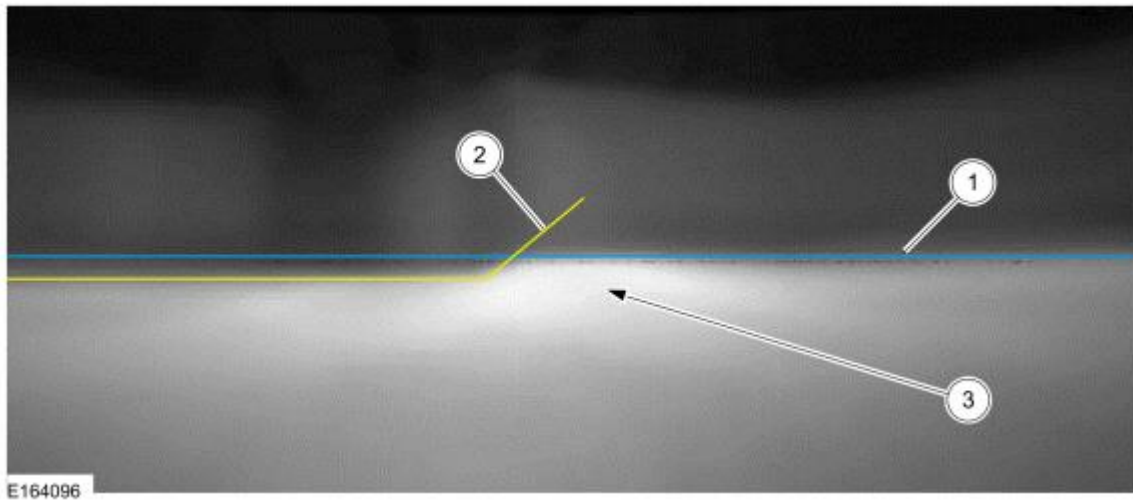
**VOL-type headlamps**

**NOTE:** Procedure applies to both left and right headlamps with VOL molded on lens.

12. **NOTE:** The appearance of the VOL beam pattern may vary between vehicles.

For VOL-type headlamps, there is a distinct cutoff in the left portion of the beam pattern. The edge of this cutoff should be positioned 5 CM (2 in) below the horizontal reference line.

- 1 - Horizontal reference line
- 2 - Cut off
- 3 - High intensity zone



13. **NOTE:** Align one headlamp while covering the other headlamp.

Align the headlamps to the horizontal reference line. Adjust the headlamp as necessary using the headlamp adjusting screw.

14. Repeat the previous step for the remaining headlamp.

NO PART OF THIS DOCUMENT MAY BE REPRODUCED WITHOUT PRIOR AGREEMENT AND WRITTEN PERMISSION OF  
FORD PERFORMANCE PARTS © Ford Motor Company 2020

## Cruise Control Radar Alignment

### Adjustment

### Vertical Alignment

**NOTE:** Make sure that the tire pressures are to specification and that the vehicle is unladen.

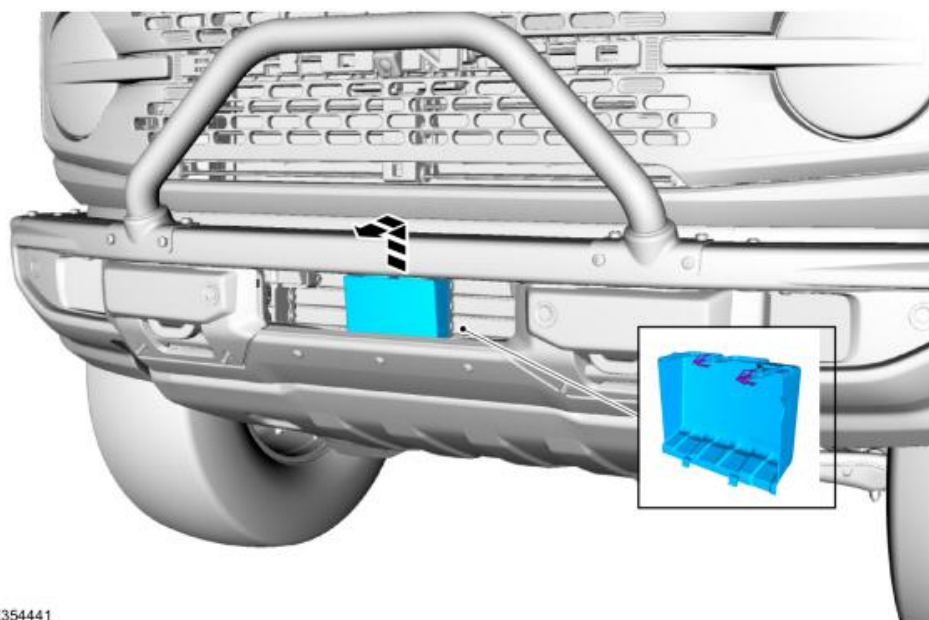
**NOTE:** In order to align the CCM (cruise control module), the front bumper must be removed to access the sensor and the vehicle must be in a wheel alignment bay station so that the vehicle is level.

**NOTE:** Damage to the CCM (cruise control module) bracket may affect correct alignment. When aligning the CCM (cruise control module), inspect the CCM (cruise control module) bracket for damage and repair as necessary before carrying out the alignment procedure.

**NOTE:** The CCM (cruise control module) bracket is part of the active grille shutter. If damage is found to the CCM (cruise control module) bracket during inspection, a new active grille shutter must be installed.

1. Remove the front bumper - plastic.  
Refer below for: Front Bumper - Plastic Removal and Installation.
2. **NOTE:** The front bumper needs to be removed on most vehicles to remove the CCM (cruise control module) cover.

Release the CCM cover top clips and remove the cover.

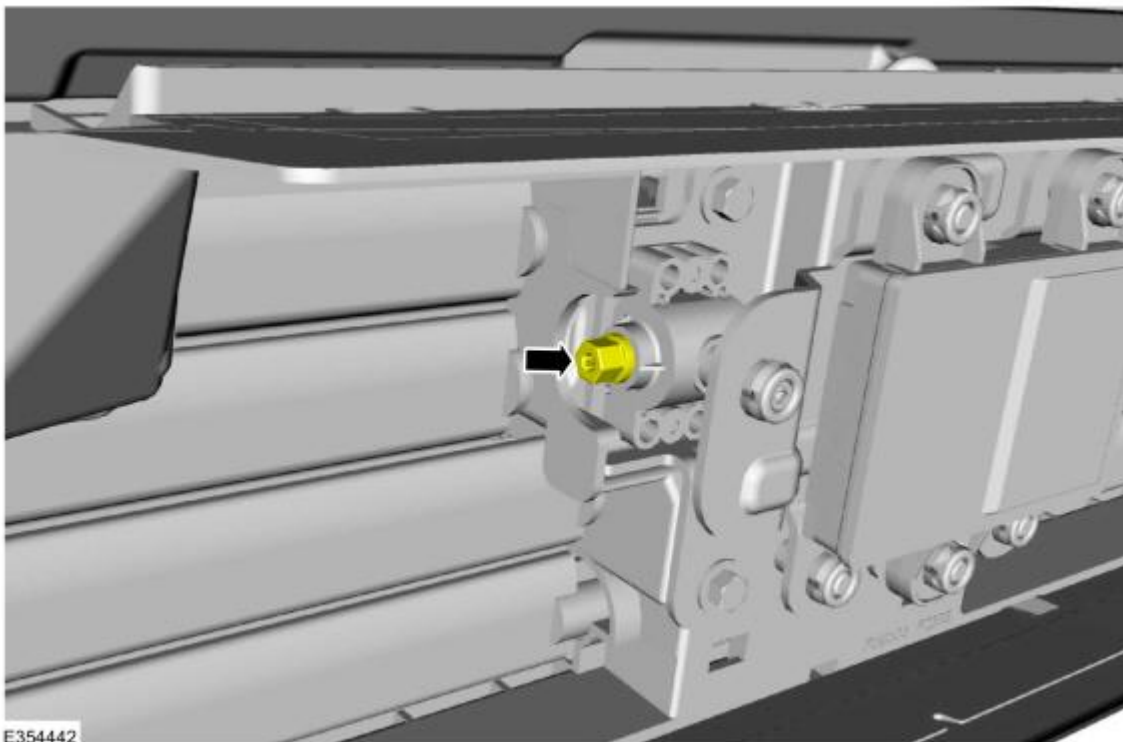


E354441

Ford Factory Shop Manual purchase options [www.motorcraftservice.com](http://www.motorcraftservice.com)

NO PART OF THIS DOCUMENT MAY BE REPRODUCED WITHOUT PRIOR AGREEMENT AND WRITTEN PERMISSION OF  
FORD PERFORMANCE PARTS © Ford Motor Company 2020

3. Place the vehicle on a wheel alignment bay station.
4. Locate the CCM alignment screw.





NO PART OF THIS DOCUMENT MAY BE REPRODUCED WITHOUT PRIOR AGREEMENT AND WRITTEN PERMISSION OF  
FORD PERFORMANCE PARTS © Ford Motor Company 2020

5. **NOTE:** *Measurement must be taken from the non-raised side of the CCM (cruise control module).*

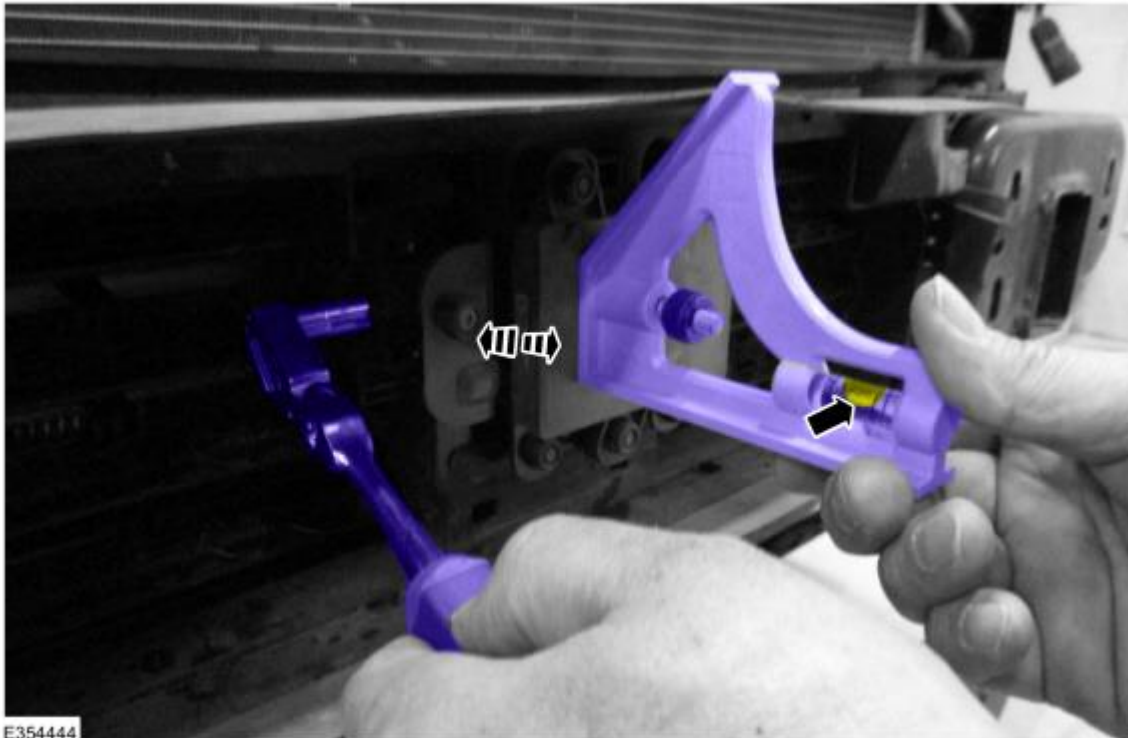
Place a combination square level on the face of the CCM and check the alignment.



NO PART OF THIS DOCUMENT MAY BE REPRODUCED WITHOUT PRIOR AGREEMENT AND WRITTEN PERMISSION OF  
FORD PERFORMANCE PARTS © Ford Motor Company 2020

6. **NOTE:** *Measurement must be taken from the non-raised side of the CCM (cruise control module).*

Keeping the combination square level on the face of the CCM , adjust the pitch by turning the adjustment screw until the CCM is vertical and level.



7. Install the front bumper.  
Refer to: Front Bumper - Modular (501-19 Bumpers, Removal and Installation).

### Horizontal Alignment

**NOTE:** *The horizontal alignment for the CCM (cruise control module) is a software calibration check that is performed by the scan tool to insure the CCM (cruise control module) radar is pointed straight. No manual adjustment is needed for this procedure. The scan tool calibrates the CCM (cruise control module) through the CCM (cruise control module) procedure in programmable parameters. The Alignment Offset specification is +/- 3.0 degrees of offset.*

8. **NOTICE:** **The vehicle's engine must be running during the horizontal alignment procedure. Failure to leave the engine running throughout the entire procedure results in the cancellation of the alignment procedure and the system remains non-functional.**

Start the engine.

9. Follow the scan tool on-screen instructions to carry-out the CCM calibration procedure.

Ford Factory Shop Manual purchase options [www.motorcraftservice.com](http://www.motorcraftservice.com)

NO PART OF THIS DOCUMENT MAY BE REPRODUCED WITHOUT PRIOR AGREEMENT AND WRITTEN PERMISSION OF  
FORD PERFORMANCE PARTS © Ford Motor Company 2020

## Front Bumper Removal and Installation (For CCM Alignment)

### Special Tool(s) / General Equipment

Interior Trim Remover

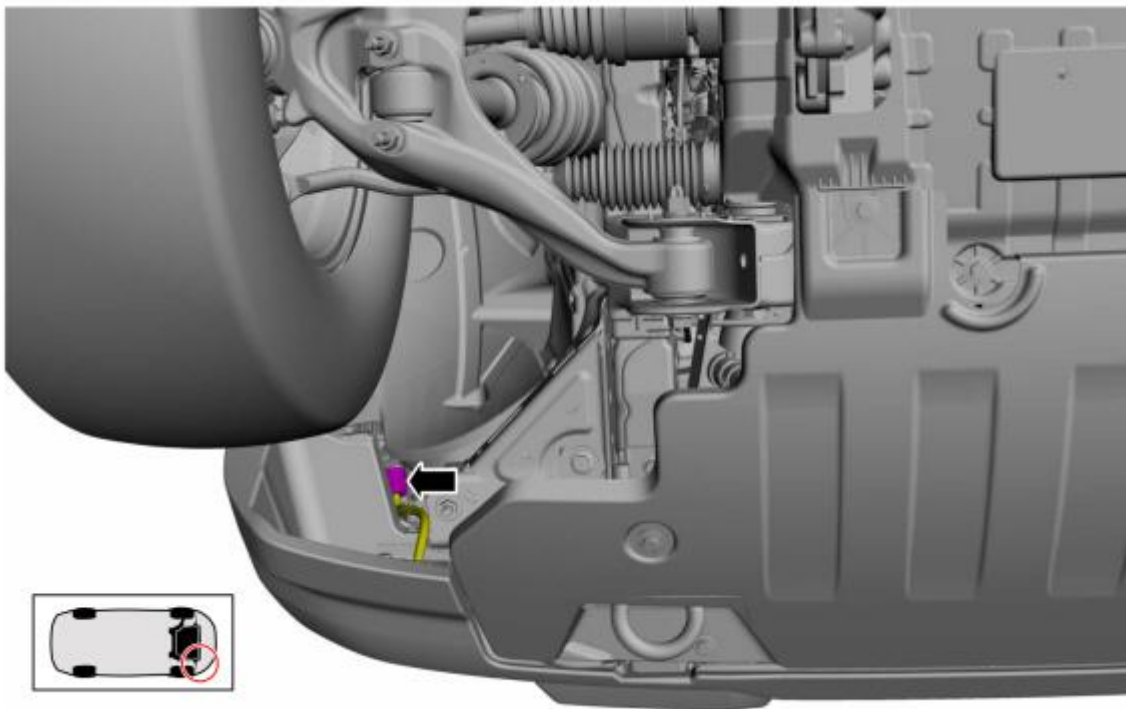
### Removal

**NOTE:** Removal steps in this procedure may contain installation details.

1. With the vehicle in NEUTRAL, position it on a hoist.  
Refer to: Jacking and Lifting (100-02 Jacking and Lifting, Description and Operation).

### Vehicles With: Front Fog Lamps/Front Parking Aid

2. Disconnect the front bumper harness electrical connector.



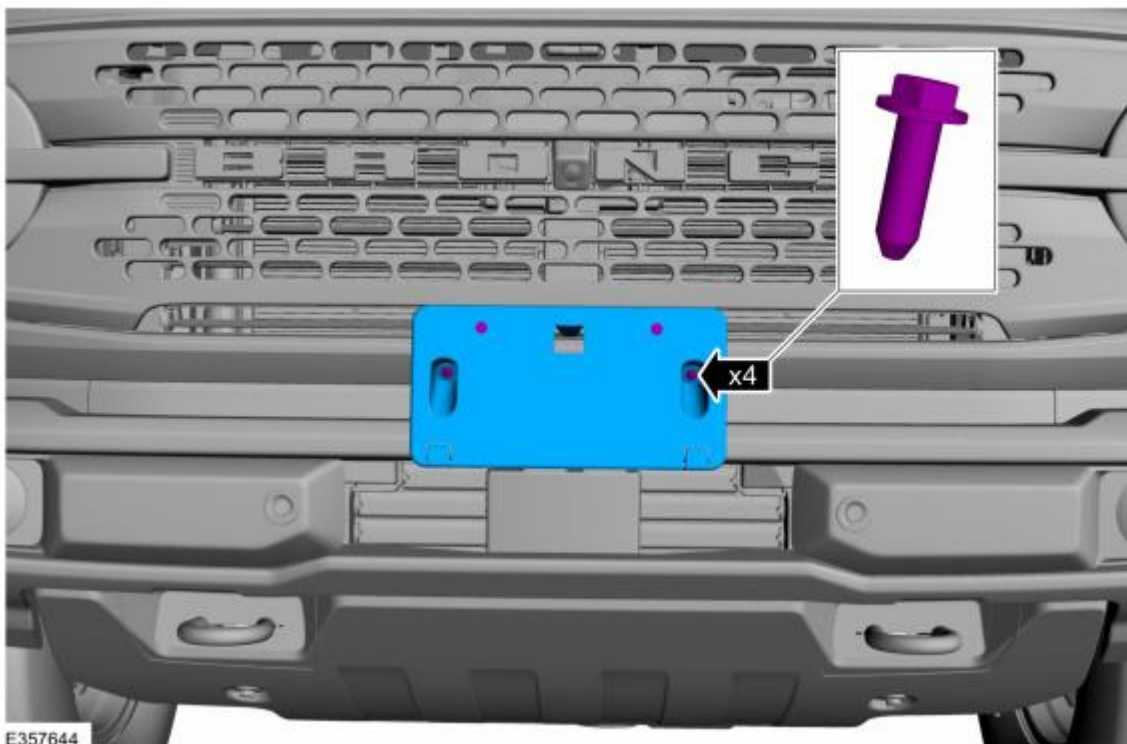
E355445

Ford Factory Shop Manual purchase options [www.motorcraftservice.com](http://www.motorcraftservice.com)

NO PART OF THIS DOCUMENT MAY BE REPRODUCED WITHOUT PRIOR AGREEMENT AND WRITTEN PERMISSION OF  
FORD PERFORMANCE PARTS © Ford Motor Company 2020

**All vehicles**

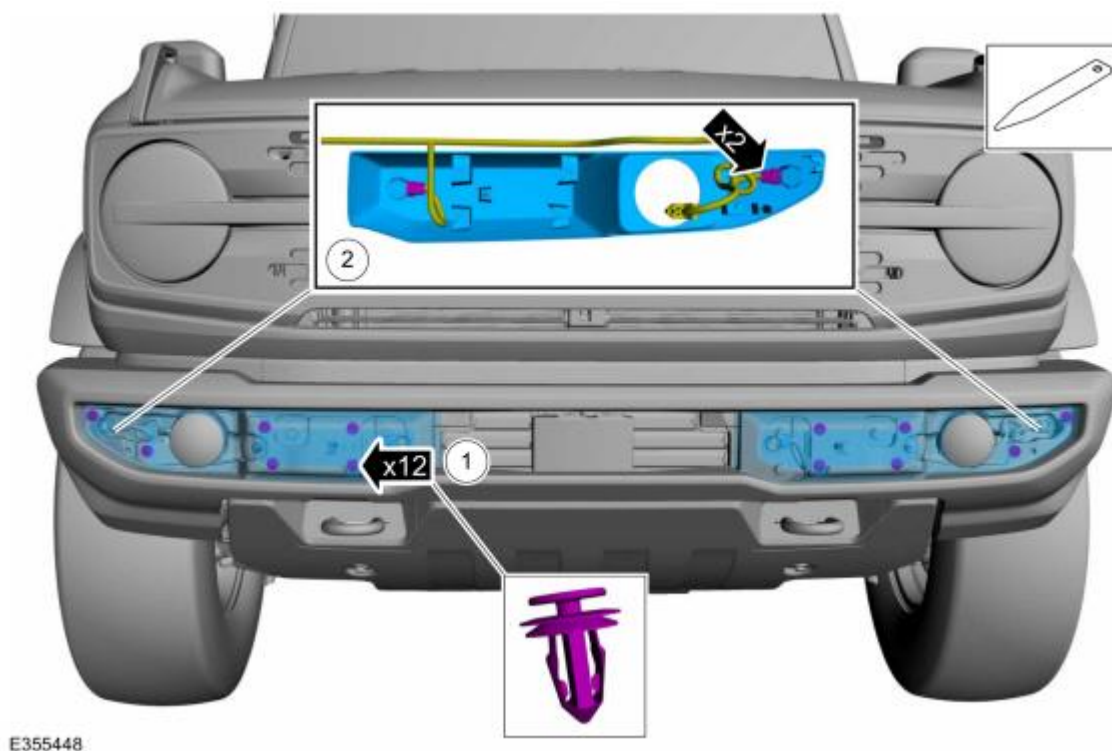
3. If equipped.  
Remove the screws and the front license plate bracket.



NO PART OF THIS DOCUMENT MAY BE REPRODUCED WITHOUT PRIOR AGREEMENT AND WRITTEN PERMISSION OF  
FORD PERFORMANCE PARTS © Ford Motor Company 2020

**Vehicles With: Front Parking Aid**

4.
  1. Release the clips and remove the front bumper trim panel.  
Use the General Equipment: Interior Trim Remover
  2. Disconnect the front parking aid sensor electrical connectors.





NO PART OF THIS DOCUMENT MAY BE REPRODUCED WITHOUT PRIOR AGREEMENT AND WRITTEN PERMISSION OF  
FORD PERFORMANCE PARTS © Ford Motor Company 2020

**All vehicles**

5. Release the clips and remove the front bumper trim panel.  
Use the General Equipment: Interior Trim Remover



NO PART OF THIS DOCUMENT MAY BE REPRODUCED WITHOUT PRIOR AGREEMENT AND WRITTEN PERMISSION OF  
FORD PERFORMANCE PARTS © Ford Motor Company 2020

6. **NOTE:** *This step requires the aid of another technician.*

Remove the bolts and the front bumper.

Torque: 81 lb.ft (110 Nm)



## Installation

### All vehicles

1. To install, reverse the removal procedure.



## M-BRONCO-W6

### Coastal Package

2025MY Bronco 2-Door Base, Big Bend, Black Diamond, and Outer Banks Trim Series

NO PART OF THIS DOCUMENT MAY BE REPRODUCED WITHOUT PRIOR AGREEMENT AND WRITTEN PERMISSION OF  
FORD PERFORMANCE PARTS © Ford Motor Company 2020

#### Torque specifications

Front stabilizer bar link upper nut *Torque*: 122 lb.ft (165 Nm)

Upper ball joint nut *Torque*: 46 lb.ft (63 Nm)

Lower ball joint nut *Torque*: 85 lb.ft (115 Nm)

Brake hose bracket bolt *Torque*: 17 lb.ft (23 Nm)

Tie rod end nut *Torque*: 46 lb.ft (63 Nm)

Axle nut *Torque*: 221 lb.ft (300 Nm)

Wheel bearing/hub nuts *Torque*: 129 lb.ft (175 Nm)

Height sensor arm bracket *Torque*: 53 lb.in (6 Nm)

Front shock absorber lower nuts *Torque*: 66 lb.ft (90 Nm)

Front and Rear shock absorber upper nuts *Torque*: 41 lb.ft (55 Nm)

Wheel nuts *Torque*: 100 lb.ft (135 Nm)

Rear shock absorber lower nuts *Torque*: 350 lb.ft (475 Nm)

Front Lower Control Arm nuts *Torque*: 210 lb.ft (285 Nm)

Ford Factory Shop Manual purchase options [www.motorcraftservice.com](http://www.motorcraftservice.com)

NO PART OF THIS DOCUMENT MAY BE REPRODUCED WITHOUT PRIOR AGREEMENT AND WRITTEN PERMISSION OF  
FORD PERFORMANCE PARTS © Ford Motor Company 2020

## 6. Service Procedures

### 360 Degree View Camera Alignment (If Equipped)

**NOTE:** *Damage to or misalignment of any of the cameras or the body panels they are mounted to, can affect the camera alignment.*

1. Prior to beginning this procedure, perform the following:
  1. Verify the exterior rear view mirrors to make sure they are in a normal driving position.
  2. Verify suspension is in a normal driving mode, if equipped with adjustable suspension.
  3. Verify that all doors, deck lid, liftgate, and tailgate are closed.
  4. Using a scan tool, retrieve and if necessary, repair any parking aid camera DTC .
  5. Clean the camera lenses. Inspect all cameras (except center high-mounted stoplamp camera and trailer camera, if equipped), the associated mounting hardware and body components for damage.
2. Environmental conditions that may affect the procedure:
  1. Perform procedure in daylight.
  2. Perform procedure when visibility is clear with high contrast scenes that are not disturbed by strong rainfall or snow.
  3. Recommend driving on normal asphalt or concrete surface.
  4. Avoid road surfaces that have a smooth and uniform appearance (e.g. snow blanketed roadway).
3. Using a scan tool, carry out the 360 degree view camera alignment procedure.
  1. Refer to the wiring diagram to identify the camera controlling module.  
Refer to Wiring Diagrams Cell [145](#) for schematic and connector information.
  2. Select the controlling module on the diagnostic scan tool screen.
  3. Select the alignment procedure.
  4. Follow the on-screen instructions.



## M-BRONCO-W6 Coastal Package

2025MY Bronco 2-Door Base, Big Bend, Black Diamond, and Outer Banks Trim Series

NO PART OF THIS DOCUMENT MAY BE REPRODUCED WITHOUT PRIOR AGREEMENT AND WRITTEN PERMISSION OF  
FORD PERFORMANCE PARTS © Ford Motor Company 2020

4. After the procedure is successful, verify the quality of the 360 degree view camera on the display.
  1. Drive to a parking lot and stop vehicle over straight parking designation lines.
  2. Activate the 360 degree view camera system.
  3. Drive slowly over the parking designation lines while watching the corners of the 360 image for stitching quality. Lines should look continuous.

### Image Processing Module A (IPMA) Service Alignment

1. Using a diagnostic scan tool, complete the PMI process for the IPMA following the on-screen instructions.
2. Carry out the camera alignment using a scan tool.

Ford Factory Shop Manual purchase options [www.motorcraftservice.com](http://www.motorcraftservice.com)



NO PART OF THIS DOCUMENT MAY BE REPRODUCED WITHOUT PRIOR AGREEMENT AND WRITTEN PERMISSION OF  
FORD PERFORMANCE PARTS © Ford Motor Company 2020

## 7. ProCal 4

1. Connect Pro Cal 4 tool to the vehicle using the included cable.
2. Power vehicle on by pressing the start button, to full accessory mode (engine off).

**It is recommended that you have the vehicle on a battery charger during these following operations. Loss of power during programming/configuration can cause corruption to the modules.**

3. You will see this screen pop up once the Pro Cal 4 tool has finished loading.
4. Select Diagnostics & Tools
5. Select Tire/Gear Adjust
6. Notice this will VIN lock this Pro Cal 4 device to this vehicle.
7. On this screen there is 2 parameters that can be adjusted. For this package, only update the top parameter to Tire (Rev/mile) to “637”. This is the parameter to update to the new tire size recommended with this package for the 285/70R17.
8. Click Continue and then follow the on screen prompts as listed below.
9. It will now prompt for the vehicle’s ignition to be turned off, then turned back on to key on to accessory mode (engine off).
10. Follow the prompts on screen, and wait the displayed amount of time that the Pro-Cal 4 needs to configure the modules.
11. Turn the ignition off once again, then turn the vehicle back on to accessory mode (engine off).
12. Go to Diagnostics & Tools
13. Select Service Functions
14. Select CDP Learn  
“CDP” = Configurable Data Parameters
15. Follow the prompts on screen.
16. Tire size learning is now complete.

Ford Factory Shop Manual purchase options [www.motorcraftservice.com](http://www.motorcraftservice.com)